



Danson Mews, SE17

£725,000

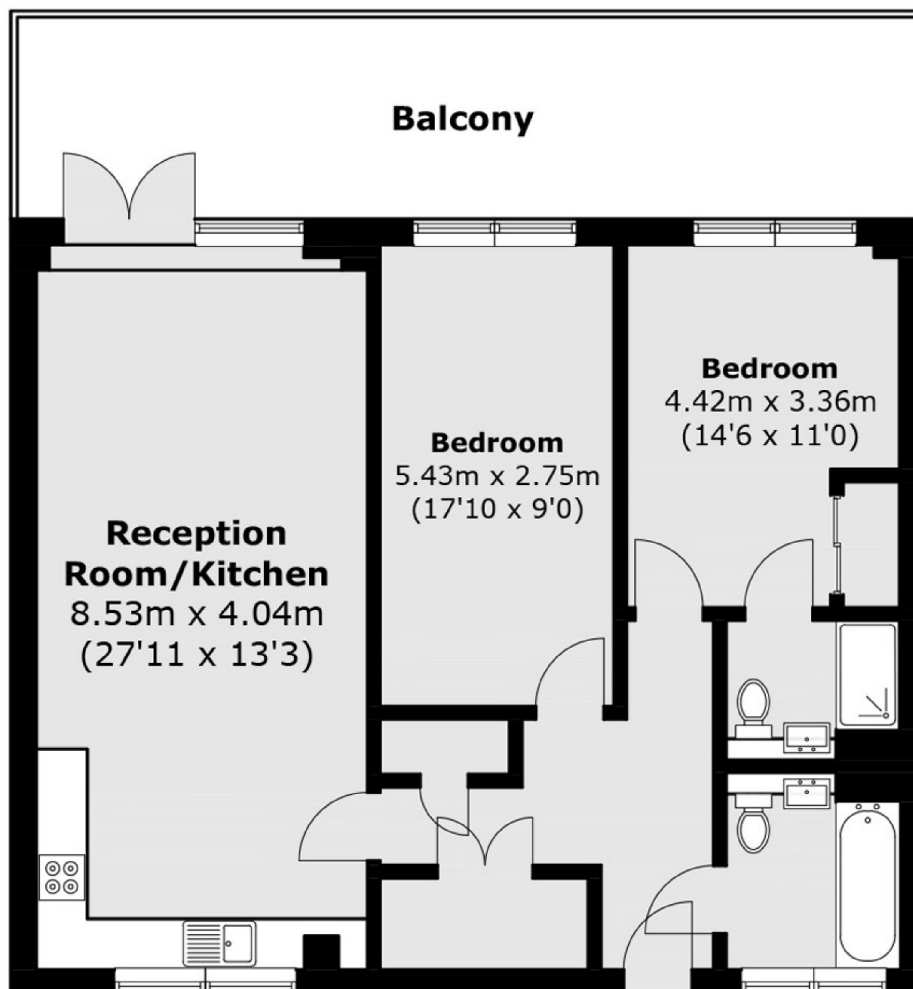
A remarkable and well proportioned top floor apartment in exceptional condition. This high specification apartment, has a fabulous open plan reception room zoned to create space for living and dining areas. Combining brilliantly with the sleek modern kitchen, this is a perfect space to entertain. There is direct access onto a large private terrace with amazing views of the London Eye, Westminster and Nine Elms. Furthermore the property has Underfloor heating, two bathrooms, excellent storage and is being sold with no onward chain.

Quietly tucked away within easy reach of Elephant and Castle, arguably one of the most exciting areas, with its rapid growth and vast array of local trendy amenities. Access to Northern and Bakerloo Lines provide easy access into the West End & City.

Features

- Two Double Bedrooms
- Lift
- Amazing Outdoor Space
- Quiet Well Connected Location
- Great Storage
- 932 sq. ft

Danson Mews, London, SE17



Total area (approx.): 86.66 sq. m (932.80 sq. ft)
Balcony area (approx.): 25.17 sq. m (270.92 sq. ft)