



Lorrimore Square, SE17

£400,000

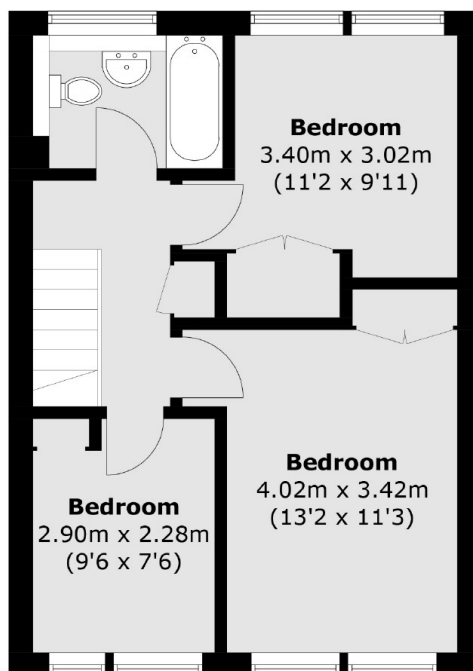
A three bedroom flat split over the first and second floors. Brilliantly proportioned there is a separate kitchen, a spacious reception room and it is being sold with no onward chain.

Lorrimore Square offers exceptional transport links from Kennington station. There is easy access to Walworth Road and Elephant and Castle, offering a wide selection of bars, restaurants and shops.

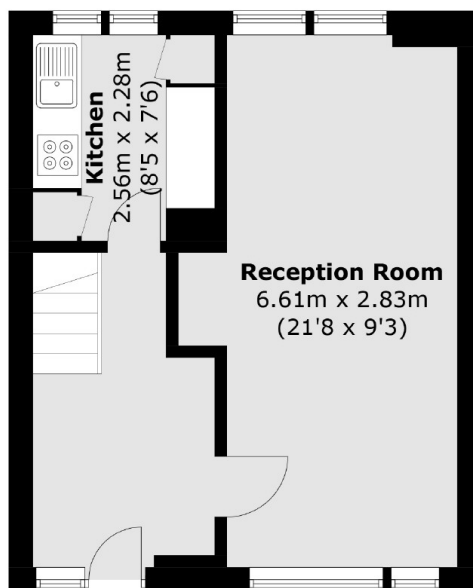
Features

- Split Level
- Three Bedrooms
- Chain Free
- Separate Kitchen
- Good Condition
- Great Location

Lorrimore Square, London, SE17



Second Floor



First Floor

Total area (approx.): 75.0 sq. m (807.3 sq. ft)