



Surrey Square, SE17

£499,950

A charming two double bedroom second floor flat on the sought after Georgian terrace Surrey Square. This flat is being sold with no onward chain and comes with a long lease.

Surrey Square is a wonderfully quiet street providing excellent access to the city and beyond with a great selection of transport links close by. There is a selection of cafés, local shops and amenities just a short stroll away including beautiful Burgess Park.

Features

- Two Double Bedrooms
- Long Lease
- No Onward Chain
- Separate Kitchen
- City Views
- Character Features

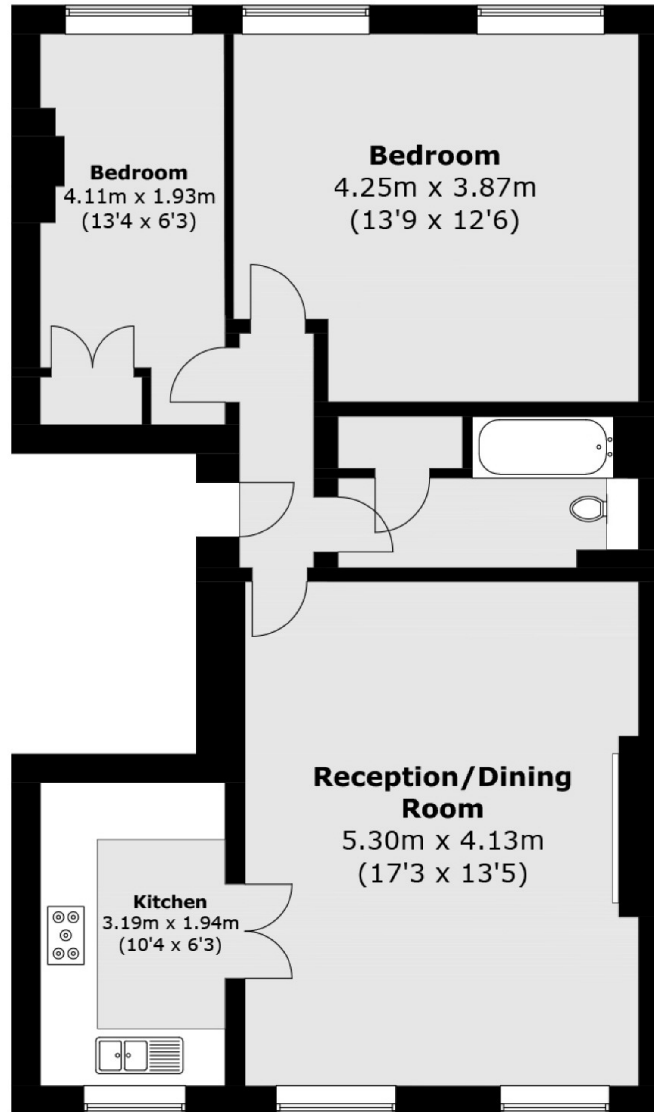


Surrey Square, SE17

There is a spacious bright reception room with a character fireplace as well as views of Surrey Square and the Church. Off of the reception room is a separate modern kitchen with integrated appliances. The three piece bathroom is in good condition and benefits from having a bath or shower option. To the rear of the property you will find the two double bedrooms which have incredible views of The Shard and the London skyline.



Surrey Square, London, SE17



Total area (approx.): 61.5 sq. m (661.9 sq. ft)