



## Kennington Park Road, SE11

£600,000

A beautifully finished one double bedroom lower ground floor home benefitting from a charming private entrance. There is a stylish eat-in kitchen which leads through into a front reception room with bi-fold doors giving direct access onto a wonderful private garden which has a variety of plants and is a great space for outside dining.

Kennington Park Road is a lovely tree lined street, just moments from pubs, eateries and local shops. High in community spirit, transport links are unbeatable with Kennington, Oval and Vauxhall stations close by, within a short stroll of Kennington Park and within easy reach of the City and West End.

### Features

- Share Of Freehold
- Grade II Listed
- Private Garden
- Own Entrance
- Eat-In Kitchen
- Great Location





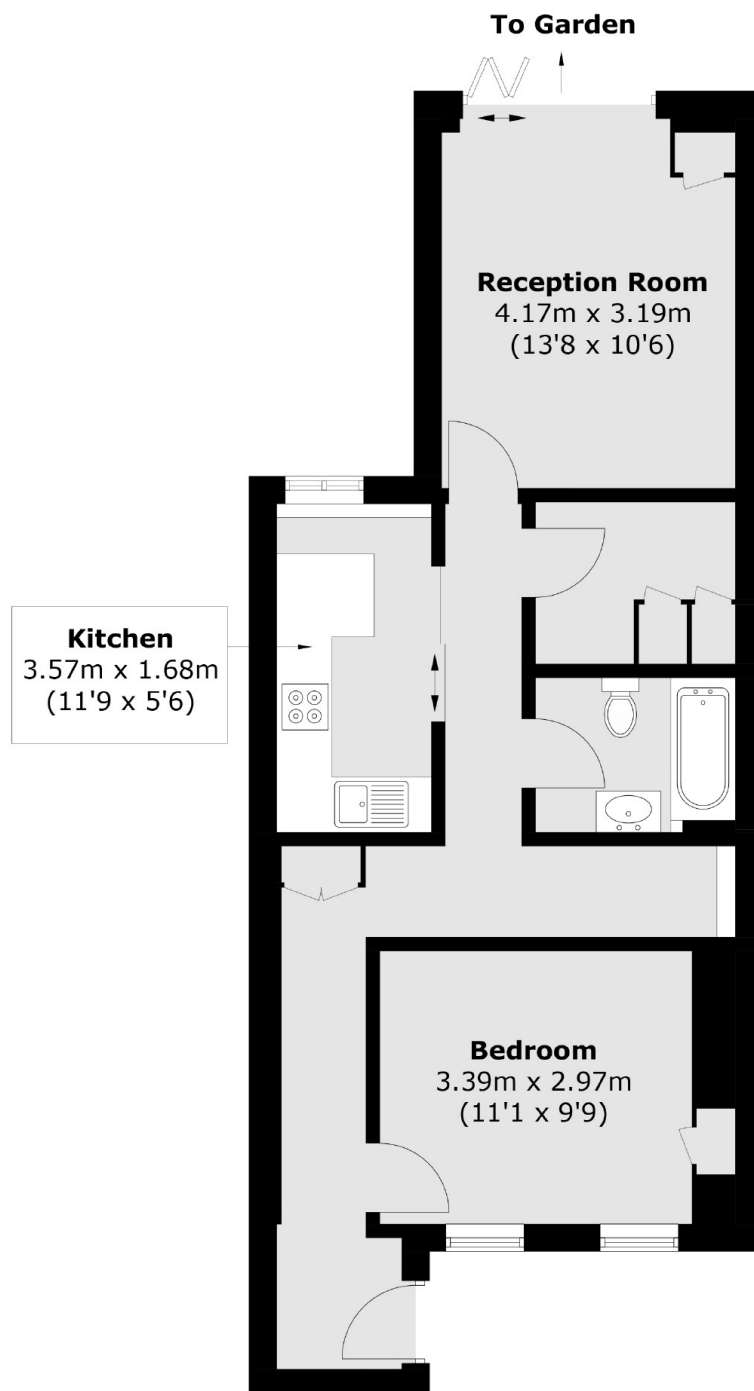
## Kennington Park Road, SE11

The South East facing sunny garden is split over two levels and provides the perfect space for entertaining and socialising. At ground level there is a built in seating area for relaxing whilst on the upper level you find a mature garden with space for a more formal al fresco dining experience. The building is Grade II listed and the flat benefits from owning a share of the freehold.





# Kennington Park Road, London, SE11



Total area (approx.): 55.0 sq. m (592.0 sq. ft)