



Lansdowne Gardens, SW8

£1,550,000

A simply wonderful terraced Victorian home available with no onward chain. Split over four floors this property has fantastic potential to bring it back into its former glory. It has a large west facing garden and five bedrooms.

A sought after postcode, located within the Lansdowne Conservation Area and located close to both Vauxhall & Stockwell stations as well as the new Nine Elms station. A short walk to the Nine Elms regeneration area and the amenities that it offers.

Features

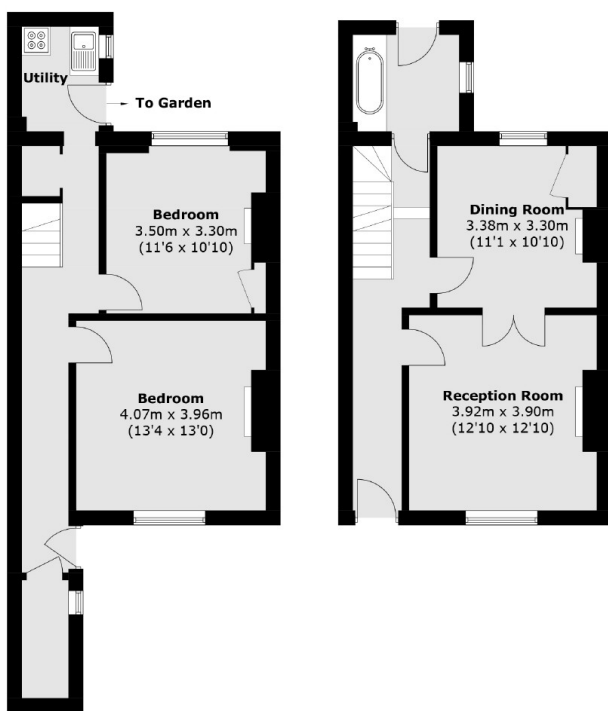
- Victorian Family Home
- Split Over Four Floors
- Large Garden
- Excellent Location
- Wonderful Potential
- No Onward Chain

Lansdowne Gardens, London, SW8



Second Floor

First Floor



Basement

Ground Floor

Total area (approx.): 175.0 sq. m (1,883.5 sq. ft)