



## Kennington Road, SE11

£1,750,000

An imposing four double bedroom, four bathroom Grade II listed family home. Retaining much of its character and charm, this well cared for home has fabulous potential throughout. No Onward Chain

Set back beyond a well kept front garden and located just moments from pubs, eateries and local shops. High in community spirit, this perfect Kennington location has great access to transport links that are unbeatable with Kennington, Oval and Vauxhall stations close by, within a short stroll of Kennington Park and within easy reach of the City and West End.

### Features

- Grade II Listed Family Home
- Four Bedrooms
- Well Proportioned Rooms
- Exceptional Location
- Four Bathrooms
- Large Garden



## Kennington Road, SE11

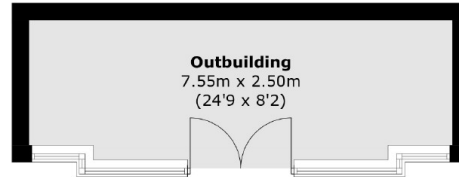
The spacious ground floor entrance hall leads through into a double length reception room and a separate family room which enjoys access onto a wonderful rear garden. The lower ground floor has a well proportioned open plan kitchen/ dining room, perfect for the family to come together. Furthermore there is a large utility room, a w/c and further access onto the lovely east facing rear garden which has a spacious outbuilding.

The first floor is where the principal bedroom is located, benefitting from built-in wardrobes and its own ensuite with separate bath and shower. The second bedroom with views over the rear garden also has an ensuite. The Second floor has two further double bedrooms, both of which have their own ensuite.

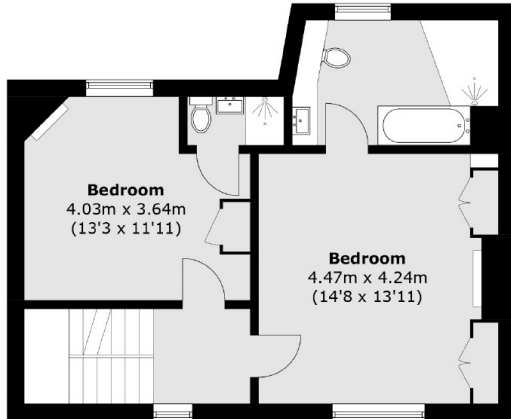
This charming family home has been incredibly well cared for, whilst it does require updating it has a fabulous amount of character and potential for the next buyers to make it their own.



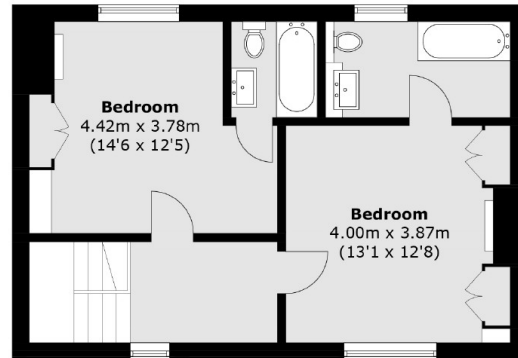
# Kennington Road, London, SE11



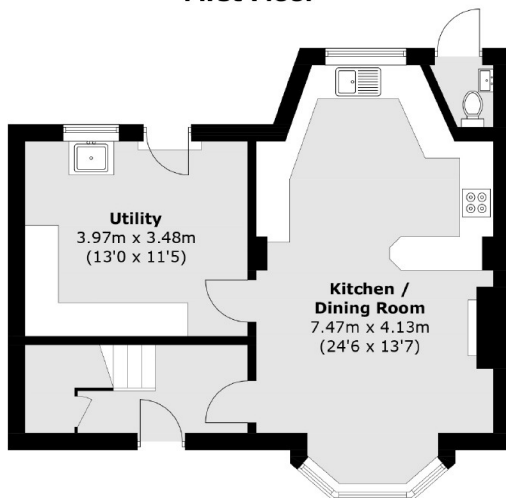
(Not Shown In Actual Location / Orientation)



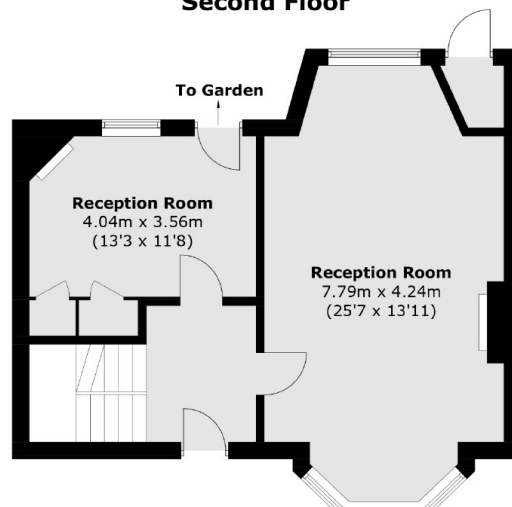
**First Floor**



**Second Floor**



**Lower Ground Floor**



**Ground Floor**

Total area (approx.): 201.0 sq. m (2,163.4 sq. ft)  
Outbuildings: 20.8 sq. m (223.9 sq. ft)