



## Pratt Walk, SE11

£575,000

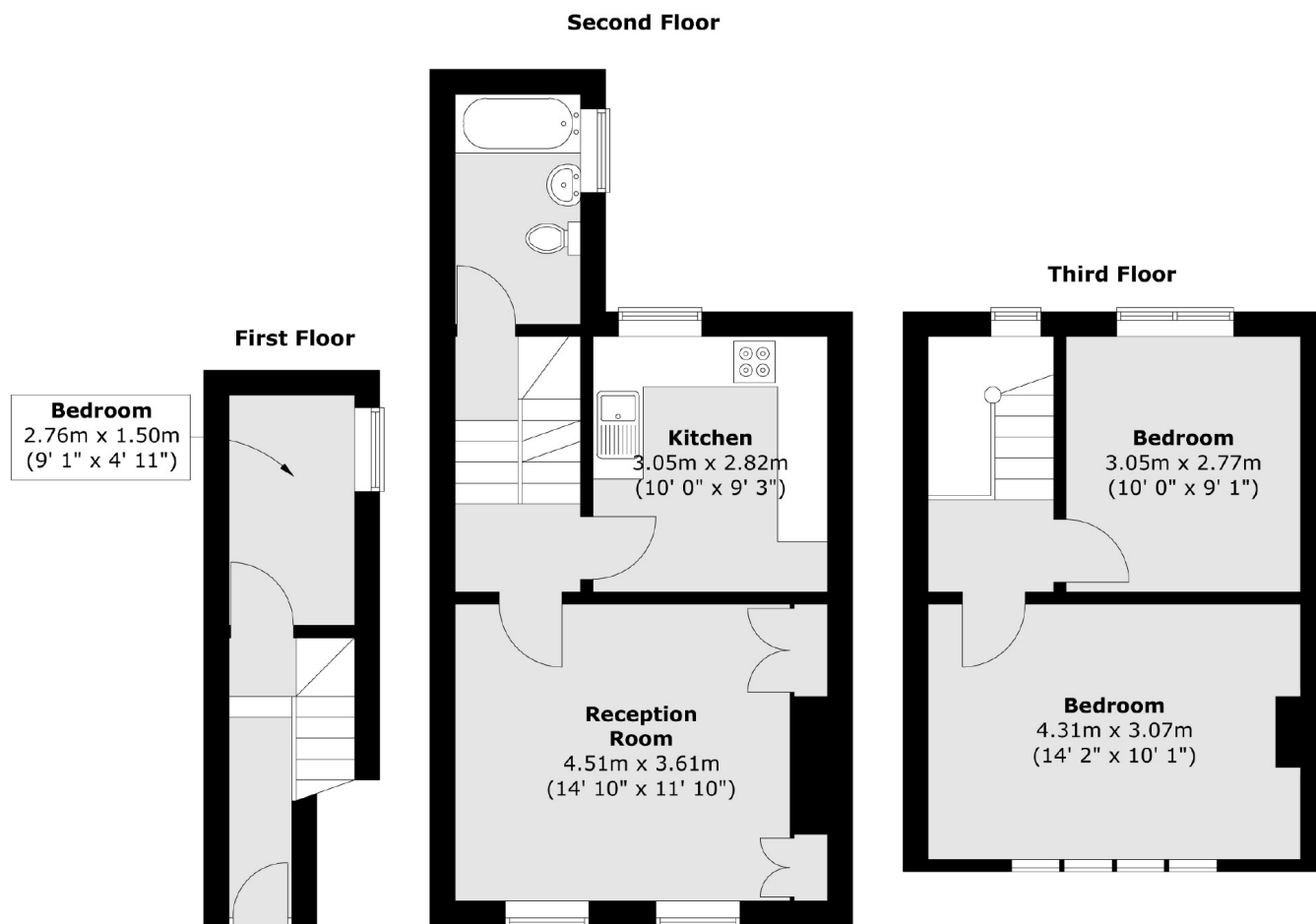
A bright and spacious three bedroom split level home providing fantastic living space and a separate kitchen. The property does require some updating but has wonderful potential for the next buyer to make it there own. Sold with no onward chain.

Conveniently located just moments from the River Thames, this fabulous location provides unbeatable access into City and West End. There are excellent transport links close by including Lambeth North tube station and Vauxhall mainline station

### Features

- Split Level
- Three Bedrooms
- Excellent Location
- No Onward Chain
- Separate Kitchen
- Bright and Spacious

# Pratt Walk, London, SE11



Total area (approx.) : 70.4 sq. m (758 sq. ft)