



## Viaduct Gardens, SW11

£965,000

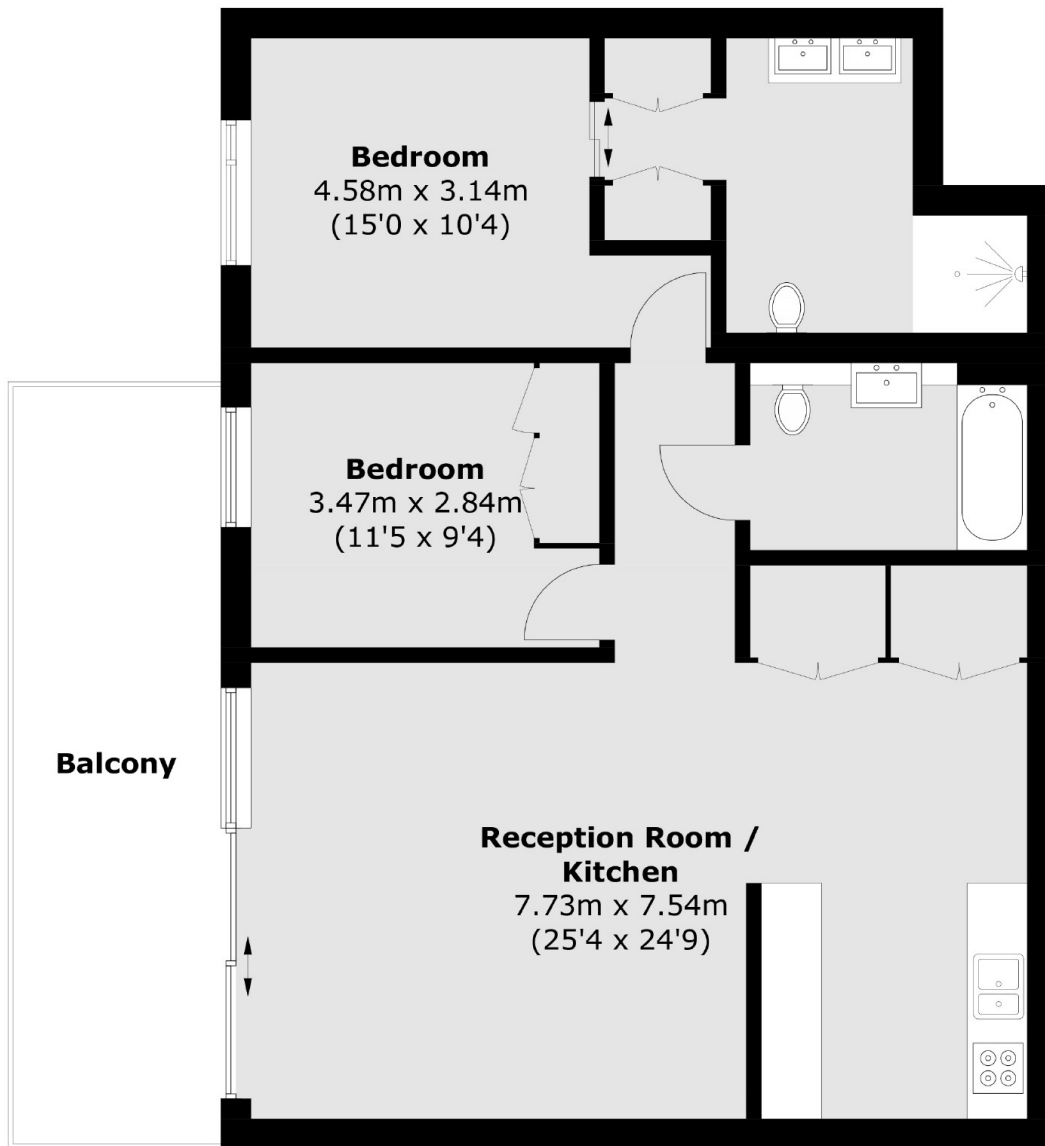
A classy, modern two double bedroom, two bathroom apartment in exceptional condition throughout. The property is flooded with light and benefits from a private balcony, 24 hour concierge, an on-site gym, spa facilities and access to the famous "Sky Pool".

Thriving Nine Elms is one of the most exciting London Neighbourhoods. Located just moments from the American Embassy and an array of local shops bars and restaurants. This wonderful location has unbeatable transport links including Nine Elms Tube Station(North Line) and easy access to Vauxhall Mainline and Tube (Victoria Line).

### Features

- Two Double Bedrooms
- No Onward Chain
- On Site Facilities
- Private Balcony
- Gym
- Concierge

# Viaduct Gardens, London, SW11



## Fourth Floor

Total area (approx.): 81.8 sq. m ( 880.5 sq. ft)  
Balcony area (approx.): 15.6 sq. m ( 167.9 sq. ft)