



Stockwell Park Crescent, SW9

£1,685,000

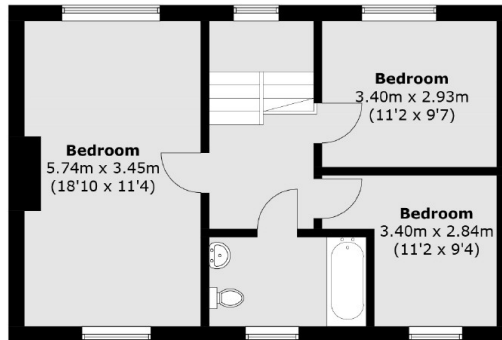
A four bedroom double fronted Grade II listed Georgian home offering exciting potential for someone to make it their own. Split over three floors the property has plenty of living space, a decent size rear garden, a garage and off street parking. Sold with no onward chain, the property has excellent potential to extend (subject to planning permission).

Stockwell Park Crescent is one of South London's most desirable streets, just a short walk from Stockwell Tube Station (Victoria and Northern Lines). Known for its welcoming community spirit and proximity to many shops, restaurants, Brixton and Kennington Park.

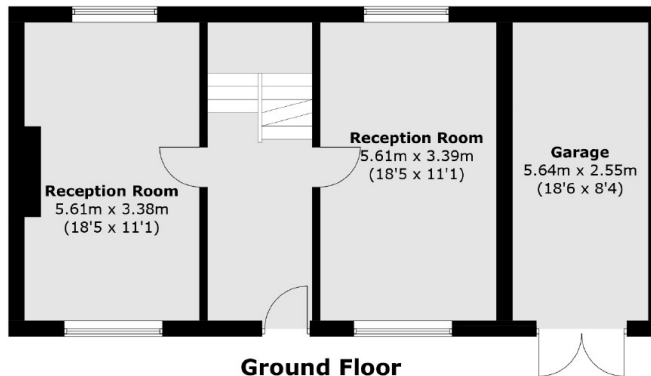
Features

- Four Bedrooms
- Detached
- Excellent Potential
- Off Street Parking
- Garage
- No Onward Chain

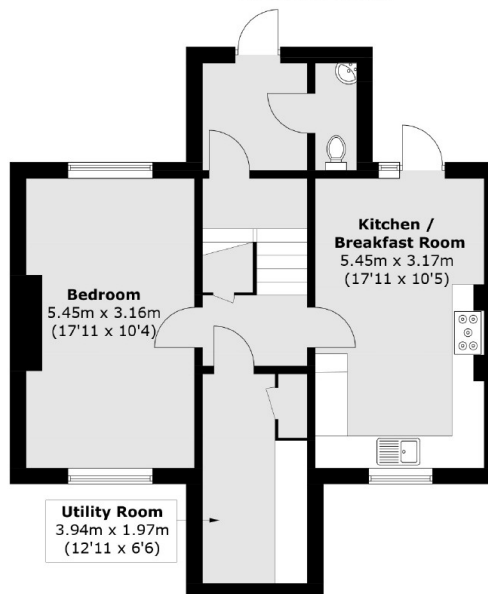
Stockwell Park Crescent, London, SW9



First Floor



Ground Floor



Lower Ground Floor

Total area (approx.): 174.7 sq. m (1880.4 sq. ft)