

## Pratt Walk, SE11

### £1,350,000

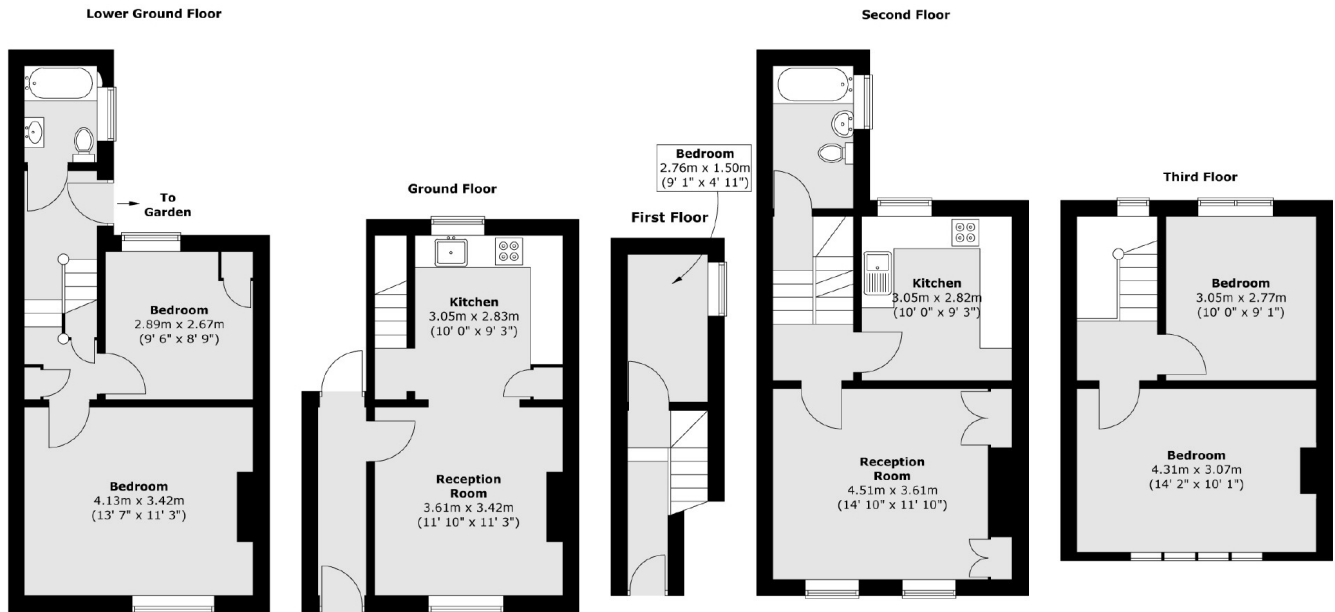
A freehold Georgian home currently split into two apartments offering flexible reception space. Incredibly bright the property has excellent potential for the next buyer to make it their own and it is being sold with no onward chain.

Conveniently located just moments from the River Thames, this fabulous location provides unbeatable access into City and West End. There are excellent transport links close by including Lambeth North tube station and Vauxhall mainline station

### Features

- Four Bedrooms
- Two Reception Rooms
- Great Location
- No Onward Chain
- Flexible Layout
- Garden

# Pratt Walk, London, SE11



Total area (approx.) : 125.9 sq. m (1355 sq. ft)