

Camberwell Passage, SE5

£639,950

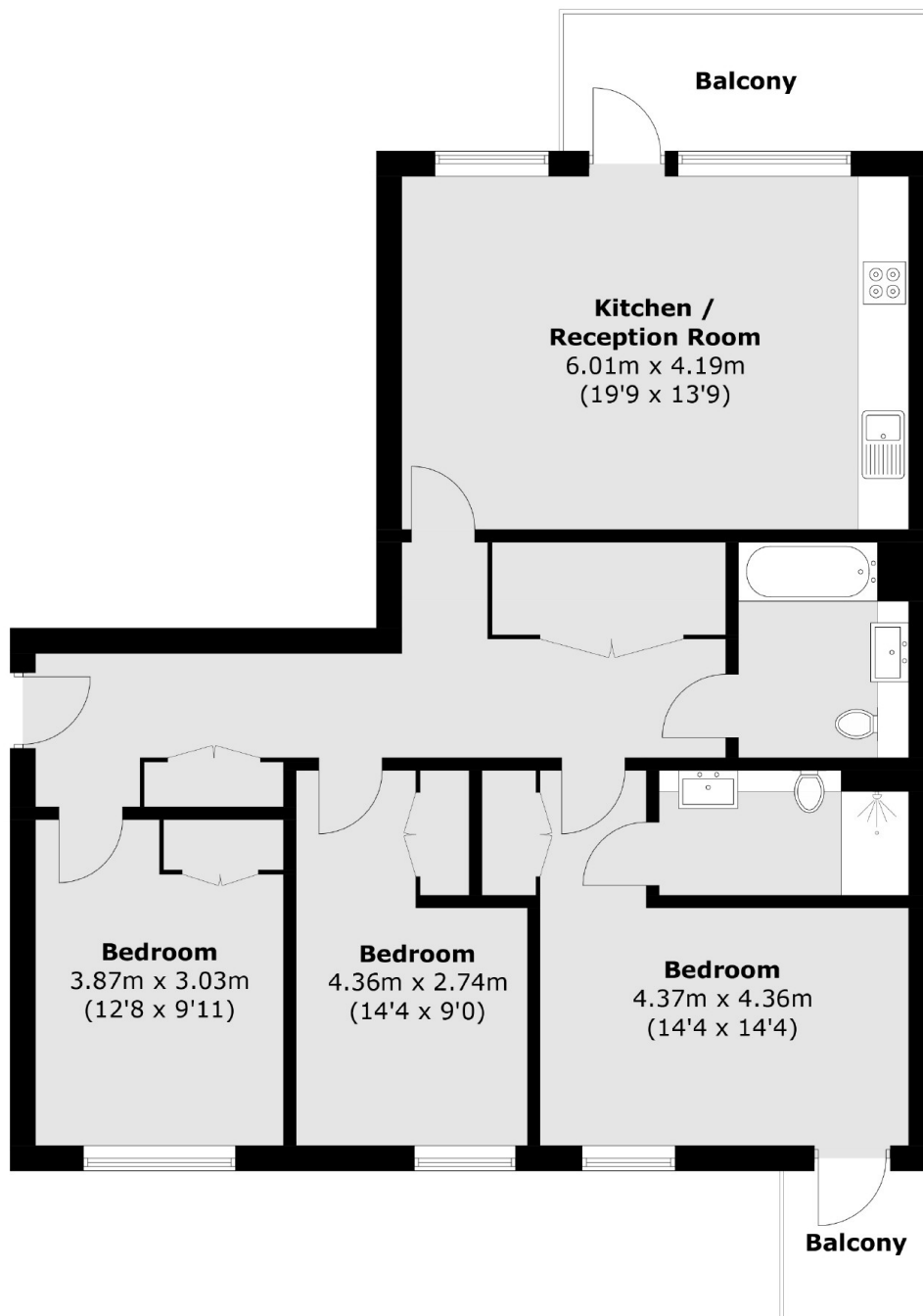
A stylish three double bedroom modern apartment at over 1,000sq.ft. This bright and spacious home has an abundance of reception space, combining brilliantly with the sleek modern kitchen and benefits from direct access onto a private balcony. There is good storage throughout the property and there is an ensuite and a family bathroom. Furthermore there is a second balcony off the master bedroom, communal gardens and concierge on the ground floor.

Features

Luxury Apartment
Three Double Bedrooms
Over 1000 Sq.Ft
Two Balconies
Concierge
Communal Gardens

Denmark Hill station is just a short walk away (Overground / Thameslink / Southern Rail). Oval, Stockwell and Elephant and Castle tubes are also within walking distance (Northern / Victoria Lines).

Camberwell Passage, London, SE5



Total area (approx.): 94.9 sq. m (1,021.5 sq. ft)
Balconys: 10.1 sq. m (108.7 sq. ft)