



## Meadow Road, SW8

£529,950

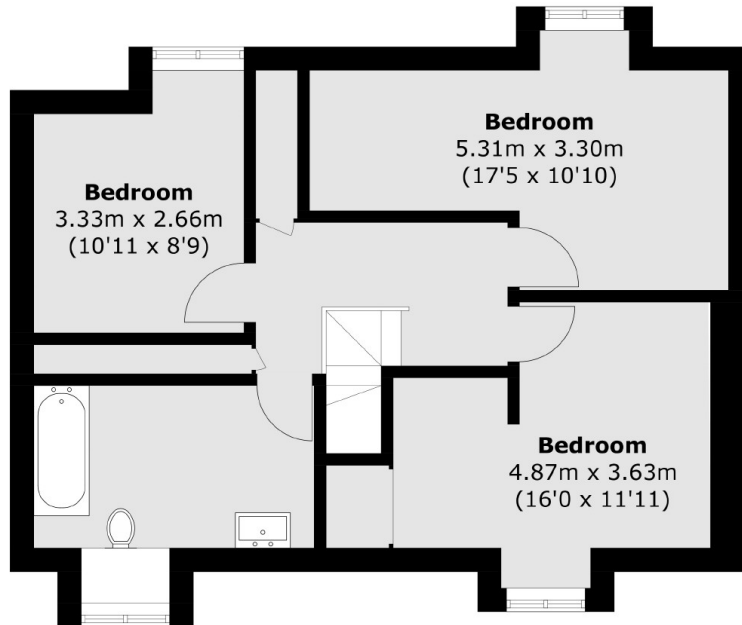
An well portioned four bedroom split level flat at over 1,200sq.ft. The property has been well cared for and benefits from a separate eat in kitchen and spacious reception room providing space for both living and dining areas. Furthermore there is lift access, two bathrooms and good storage throughout.

Quietly located just moments from everything Vauxhall has to offer. Fabulous transport links including Vauxhall mainline, tube station(Victorian Line) and Kennington Park are a short walk away. There are a number of amenities close by including the Oval cricket ground

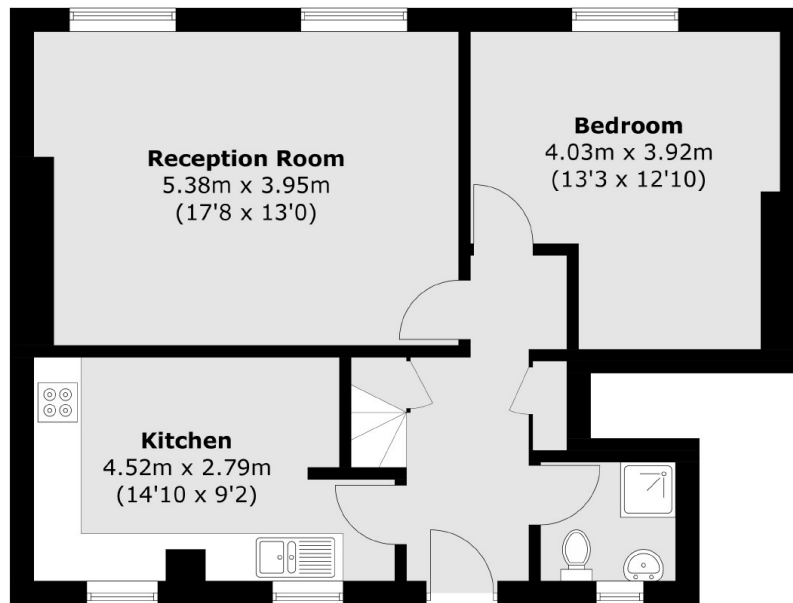
### Features

Four Bedrooms  
Split Level  
Lift  
Two Bathrooms  
1,223SQ.FT  
Good Condition

# Meadow Road, London, SW8



**Fifth Floor**



**Fourth Floor**

Total area (approx.): 113.7 sq. m (1,223.8 sq. ft)