



## Kennington Lane, SE11

£695,000

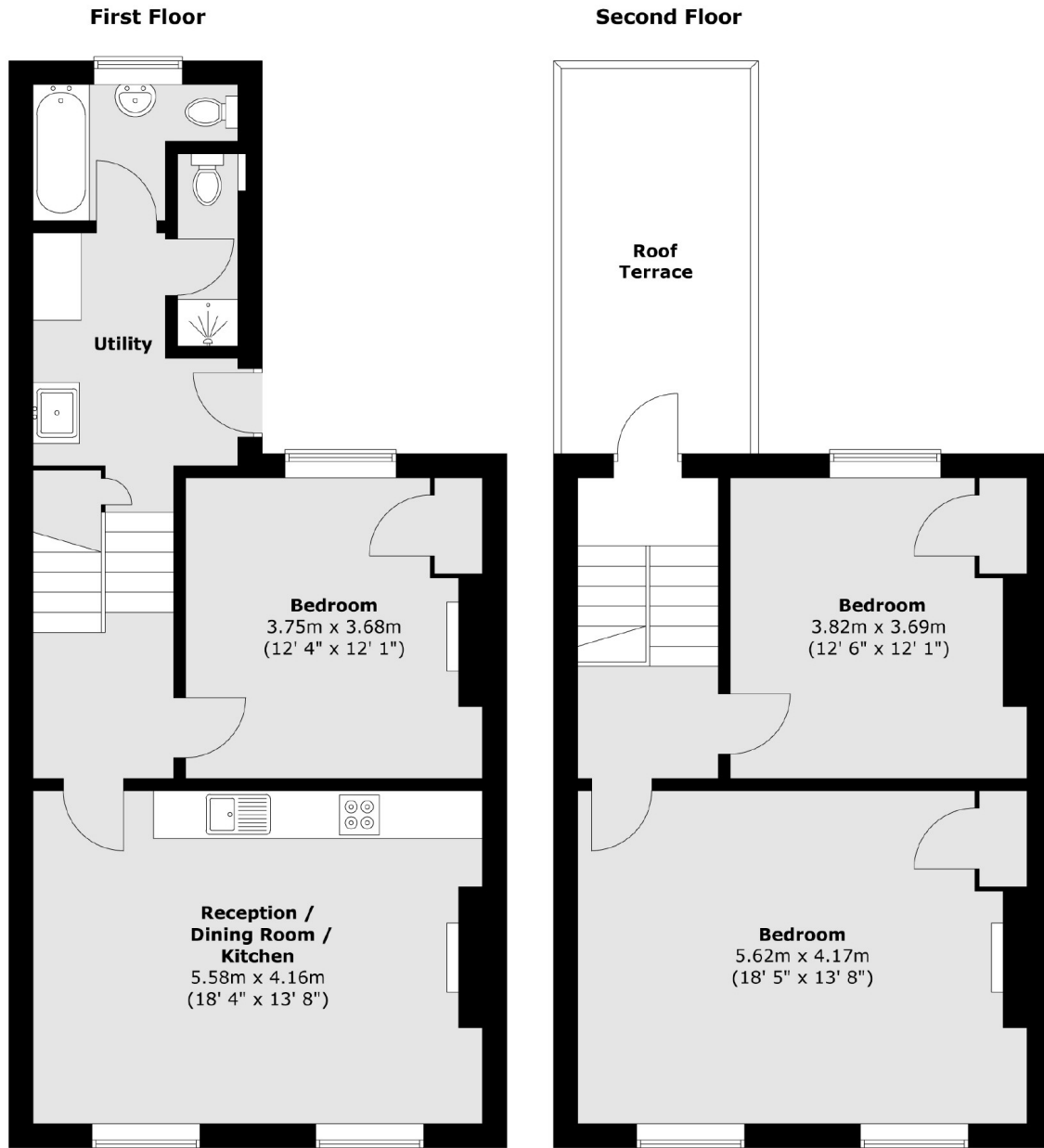
A fantastic three double bedroom split level apartment. Beautifully refurbished throughout this spacious home has a wonderful reception room with fitted kitchen and space for dining. The property also benefits from its own private entrance and direct access onto a private balcony with views over Vauxhall Park. Sold with no onward chain.

Conveniently located in the heart of Vauxhall just moments from Vauxhall mainline and tube stations (Victoria Line). There is a wide range of pubs, restaurants and cafes locally.

### Features

- Three Bedrooms
- Split Level
- Private Terrace
- No Onward Chain
- Excellent Condition
- Private Entrance

# Kennington Lane, London, SE11



Total area (approx.) : 103 sq. m (1109 sq. ft)  
Total roof terrace area (approx.) : 11.3 sq. m (122 sq. ft)