



Brixton Road, SW9

£1,450,000

A wonderful four bedroom Grade II listed Georgian house with an outstanding garden that offers off street parking via rear access. The house has beautiful character features throughout and ample living space for relaxing and entertaining.

As far as locations go, it doesn't get much better than this. It's a minute walk from a lovely pub (The Crown and Anchor) and park (Slade Gardens), and a short stroll to the heart of Brixton and all that this ever-popular area has to offer in terms of shopping, nightlife, and transport links. This property is perfect for anyone who wants to be close to the action and shorten their commute, with both the Victoria and Northern Underground lines reachable by foot in just ten minutes.

Features

Georgian House
Off Street Parking
Character Home
Beautiful Garden
No Onward Chain
Excellent Location



Brixton Road, SW9

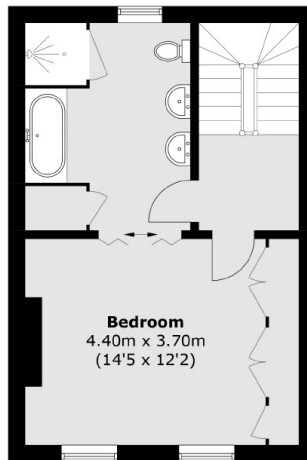
The house has wonderful kerb appeal, a fine example of a well maintained Georgian home. The raised ground floor entrance hallway leads to an open plan dining room and kitchen. There is light running straight through via the beautiful sash windows with original shutters from the front of the house to the beautifully maintained sunny west facing garden at the back. There is a character fire place and a fully fitted kitchen with ample work top space.

On the first floor is the reception room, a great space for socialising with two Juliette balcony character sash windows. The shutter doors give you the option of opening up the space to the study or closing it off if privacy is needed. What is currently being used as a study also has the option of being a fourth bedroom.

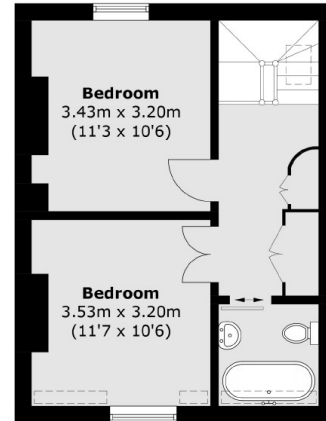
The principle bedroom can be found on the second floor, a fantastic size with access to a family sized en suite bathroom with double sink, bath and walk in shower. There are two more double bedrooms on the top floor of the house serviced by another bathroom.



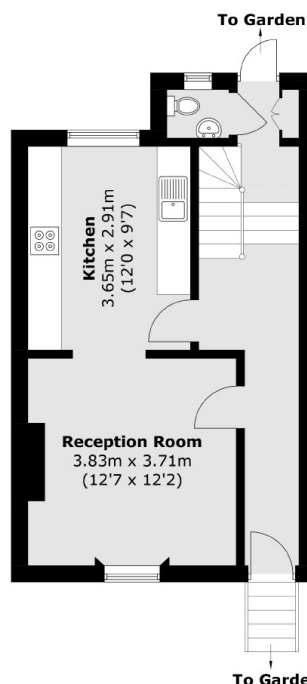
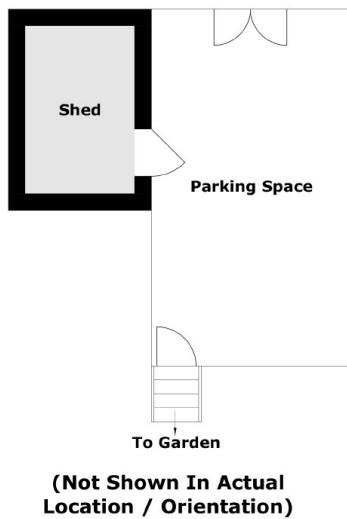
Brixton Road, London, SW9



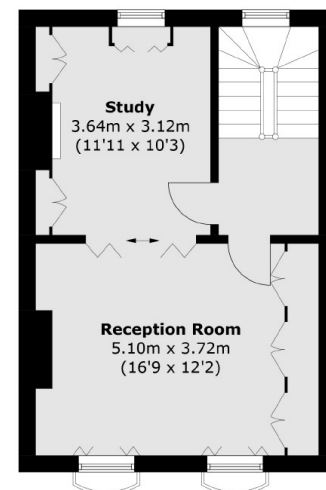
Second Floor



Third Floor



Ground Floor



First Floor

Total area (approx.): 150.8 sq. m (1,623.2 sq. ft)
Shed : 5.9 sq. m (63.5 sq. ft)