



Viaduct Gardens, SW11

£900,000

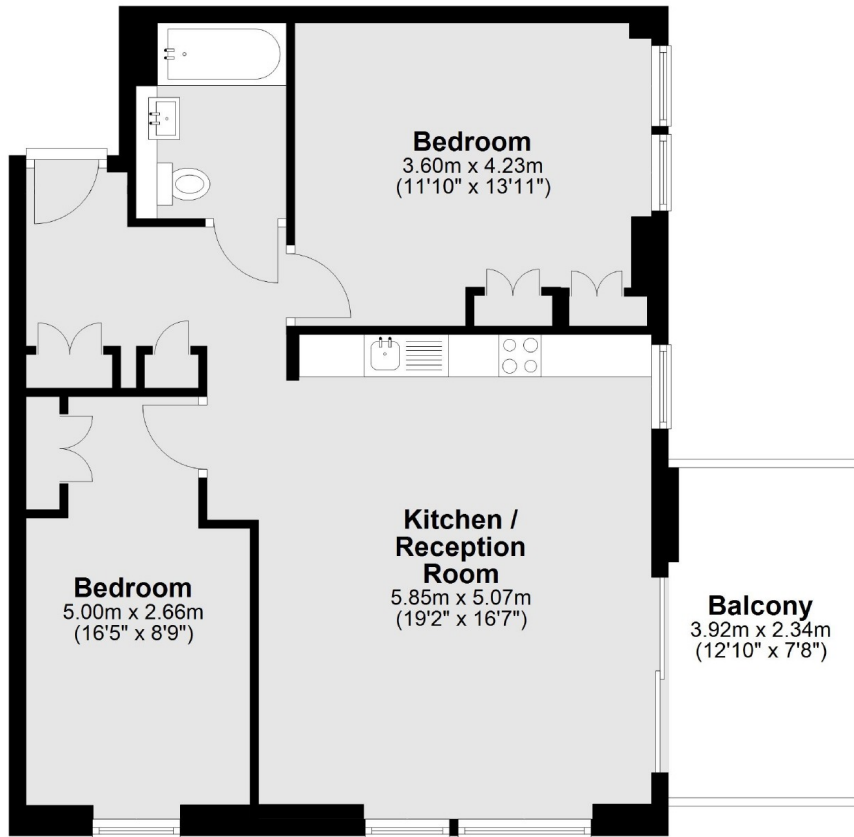
A spacious, modern two double bedroom, apartment in exceptional condition throughout. The property is a fantastic investment with 24 hour concierge, an on-site gym, spa facilities and the famous "Sky Pool".

Thriving Nine Elms is one of the most exciting London Neighbourhoods. Located just moments from the American Embassy and an array of local shops bars and restaurants. This wonderful location has unbeatable transport links including Nine Elms Tube Station(North Line) and easy access to Vauxhall Mainline and Tube (Victoria Line).

Features

- Two Bedrooms
- High Specification Finish
- Balcony
- Concierge
- Gym
- Storage

Viaduct Gardens,
London, SW11



Main area: Approx. 67.8 sq. metres (729.9 sq. feet)
Plus balconies, approx. 9.2 sq. metres (98.5 sq. feet)