



## Cabanel Place, SE11

£850,000

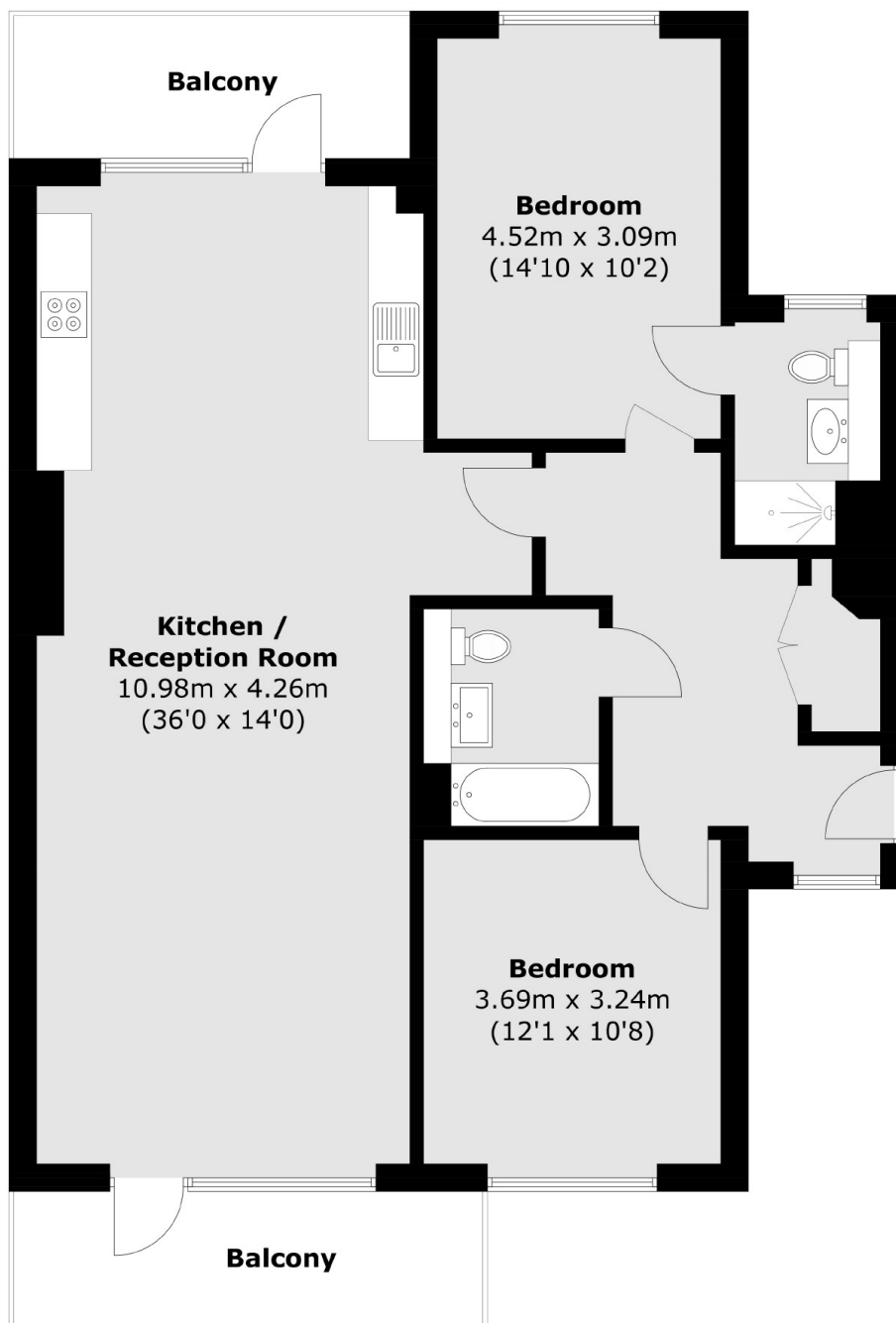
A spacious two double bedroom apartment in excellent condition throughout. At over 1,000sq.ft this wonderful apartment has two balconies and an open plan living room that combines brilliantly with the stylish modern kitchen. Furthermore there are two bathrooms, good storage and the property is being sold with no onward chain.

Quietly located, part of a gated community moments from Kennington, the River Thames & Westminster. There are excellent transport links nearby with both Kennington Tube and Vauxhall Mainline station just a short stroll away.

### Features

- Two Double Bedrooms
- Excellent Condition
- Two Bathrooms
- 1,039SQ.FT
- No Onward Chain
- Two Balconies

# Cabanel Place, London, SE11



## First Floor

Total area (approx.): 96.6 sq. m (1,039.8 sq. ft)  
Balcony: 14.1 sq. m (151.7 sq. ft)