



Knatchbull Road, SE5

£499,950

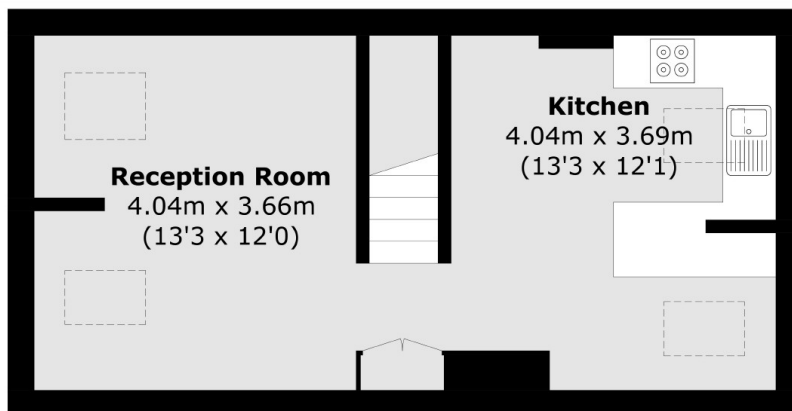
A wonderful split level two double bedroom church conversion. The property is in good condition and has a fabulous open plan reception room and kitchen with vaulted ceilings and an eye catching exposed wooden beam. Furthermore there is a family bathroom, good storage and no onward chain.

Knatchbull Road is a peaceful tree lined road on the cusp of Zone 1 and on the doorstep of beautiful Myatt's Fields Park. There are a number of local shops, restaurants and boutiques close by and excellent transport links including Oval tube station (Northern Line) Loughborough Junction (National Rail) and a number of good local bus routes.

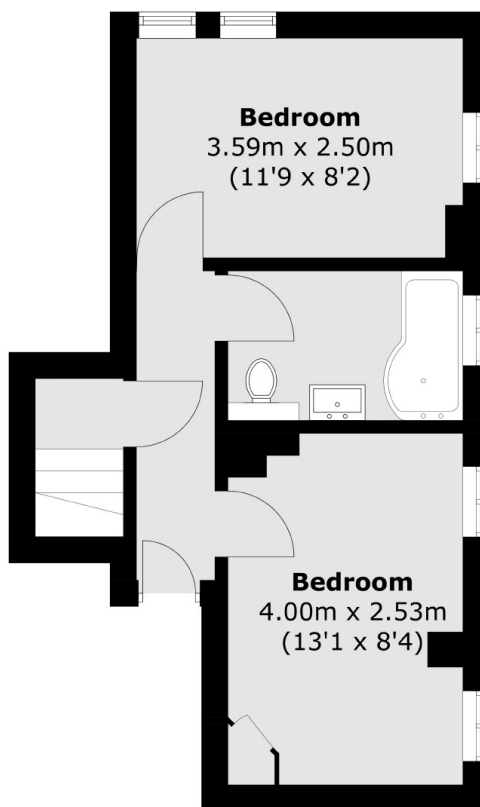
Features

- Split Level
- Two Double Bedrooms
- Church Conversion
- No Onward Chain
- Leafy Location
- Open Plan Living

Knatchbull Road, London, SE5



Third Floor



Second Floor

Total area (approx.): 65.3 sq. m (702.9 sq. ft)