



## Kennington Lane, SE11

£825,000

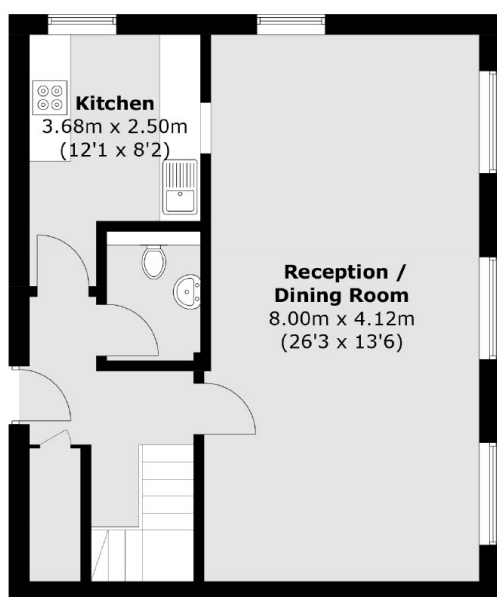
A charming split level three bedroom flat offered to the market with no onward chain. The spacious reception room provides great space for both living and dining areas and leads through into a separate kitchen. The first floor has three good sized bedrooms, two bathrooms and a good amount of storage. Furthermore there is a separate w/c, an allocated parking space set within a gated compound and a concierge. Residents also benefit from the use of on site facilities including a gym and a sauna.

Imperial Court is a grand gated development a short walk away from Oval station and just moments away from Vauxhall, with frequent South West Rail and Victoria Line services. Westminster is easily accessible by foot.

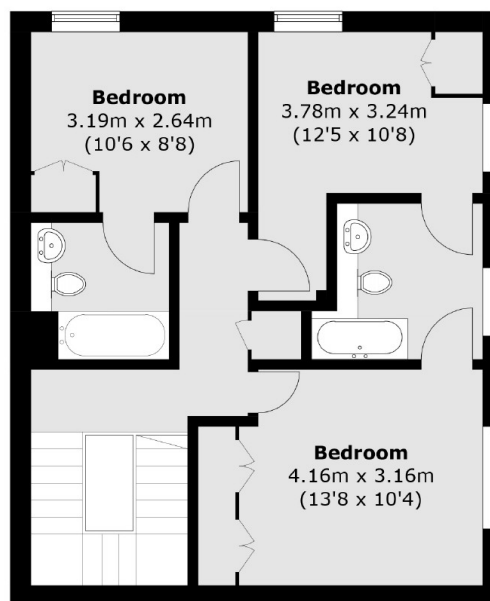
### Features

- Three Bedrooms
- Concierge
- Gated Development
- Communal Gym
- Share of Freehold
- Split Level

# Kennington Lane, London, SE11



**Ground Floor**



**First Floor**

Total area (approx.): 106.2 sq. m (1,143.2 sq. ft)