



## Foxley Road, SW9

£379,950

A beautifully bright one bedroom top floor conversion set within a beautiful Grade II listed building. This pretty home has a spacious reception room with a large sash window, high ceilings and a separate modern kitchen. Furthermore, there is great storage and the property has use of a large south west facing communal terrace and garden, which is a perfect space to relax and enjoy the lovely green views.

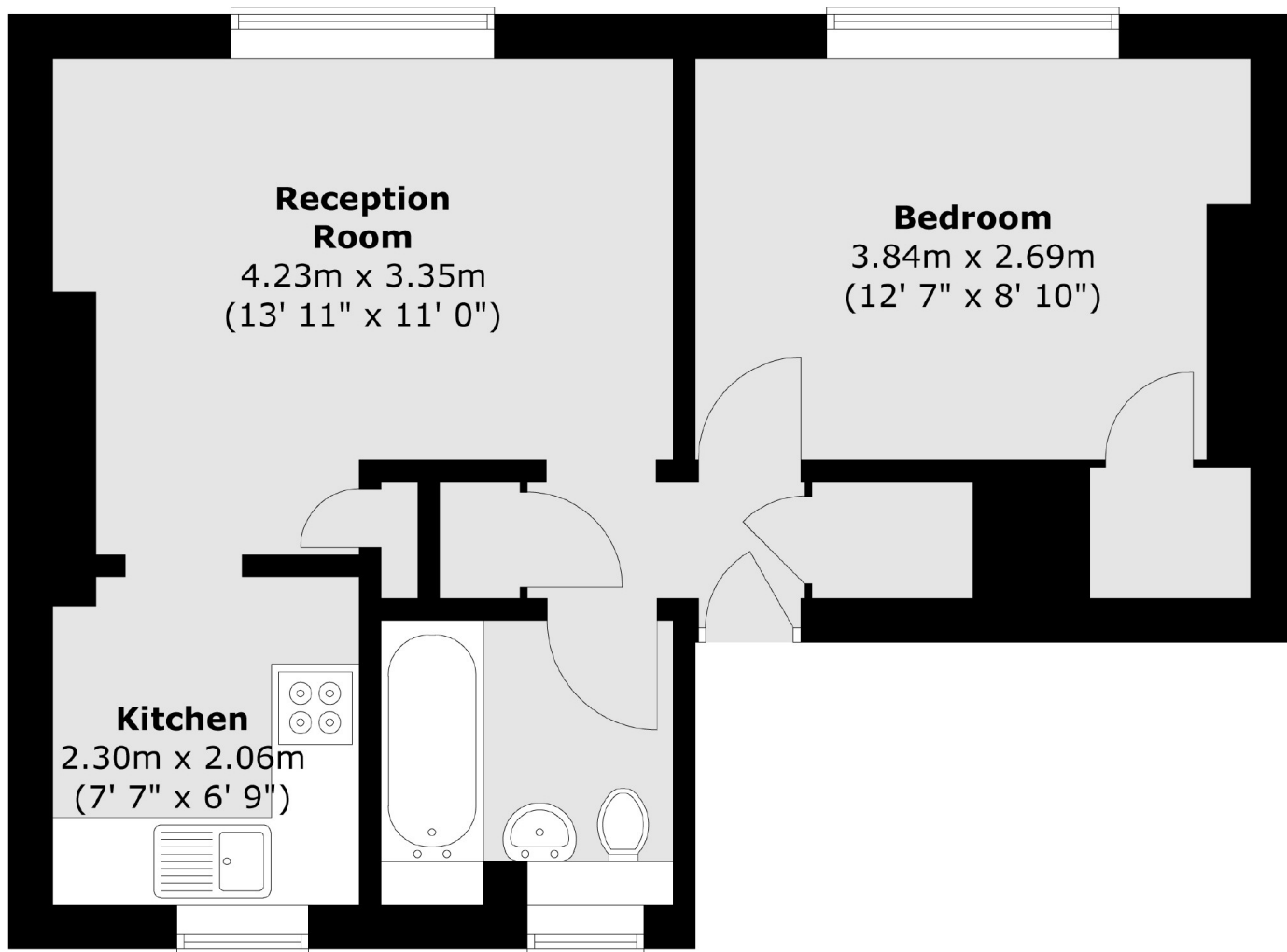
Foxley Road is a beautiful tree lined street located within a conservation area just moments from Oval Station and further transport links. There are many local pubs, restaurants and cafes close by as are the green spaces of Kennington Park and Myatt's Fields Park.

### Features

- Top Floor
- Quiet Location
- Great Condition
- No Onward Chain
- Communal Terrace and Garden
- Separate Kitchen

**Foxley Road,  
London, SW9**

**Second Floor**



Total area (approx.) : 39.4 sq. m (424 sq. ft)