



Kennington Park Road, SE11

£580,000

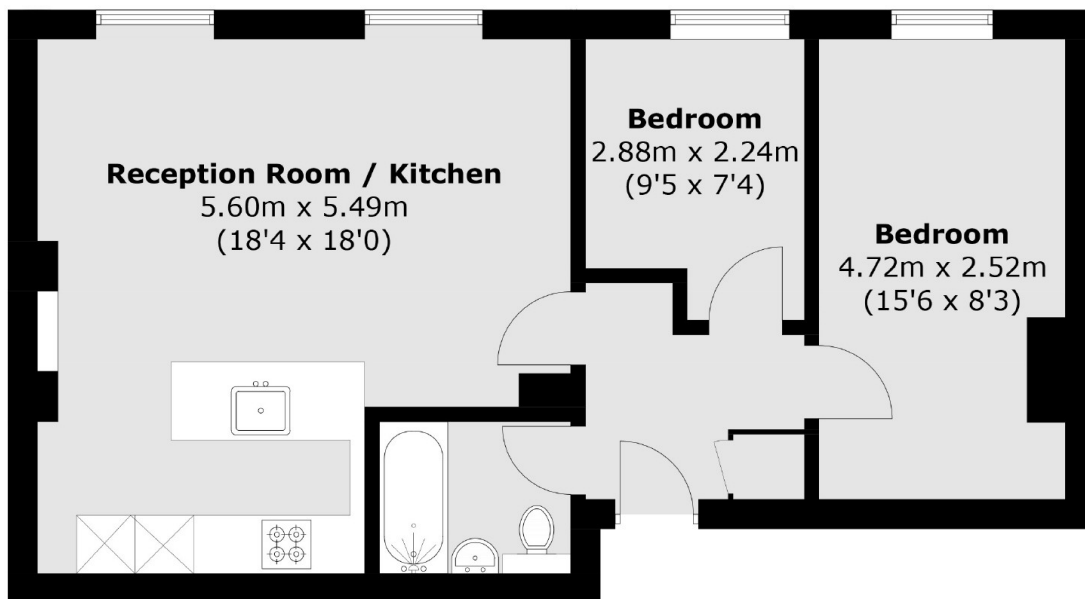
A wonderful two bedroom first floor Georgian apartment in excellent condition throughout, benefitting from a share of the freehold. The property has spacious open plan reception room with two large sash windows that draw in lots of natural light. The stylish modern kitchen has plenty of storage and built in appliances. Furthermore there is a contemporary bathroom, good storage and the property is being sold with no onward chain.

Kennington Park Road is a lovely tree lined street, just moments from pubs, eateries and local shops. High in community spirit, transport links are unbeatable with Kennington, Oval and Vauxhall stations close by, within a short stroll of Kennington Park and within easy reach of the City and West End.

Features

- Two Bedrooms
- Excellent Condition
- Share of Freehold
- No Onward Chain
- Central Location
- High Ceilings

Kennington Park Road, London, SE11



Total area (approx.): 54.3 sq. m (584.5 sq. ft)