



## Kennington Road, SE11

### £599,950

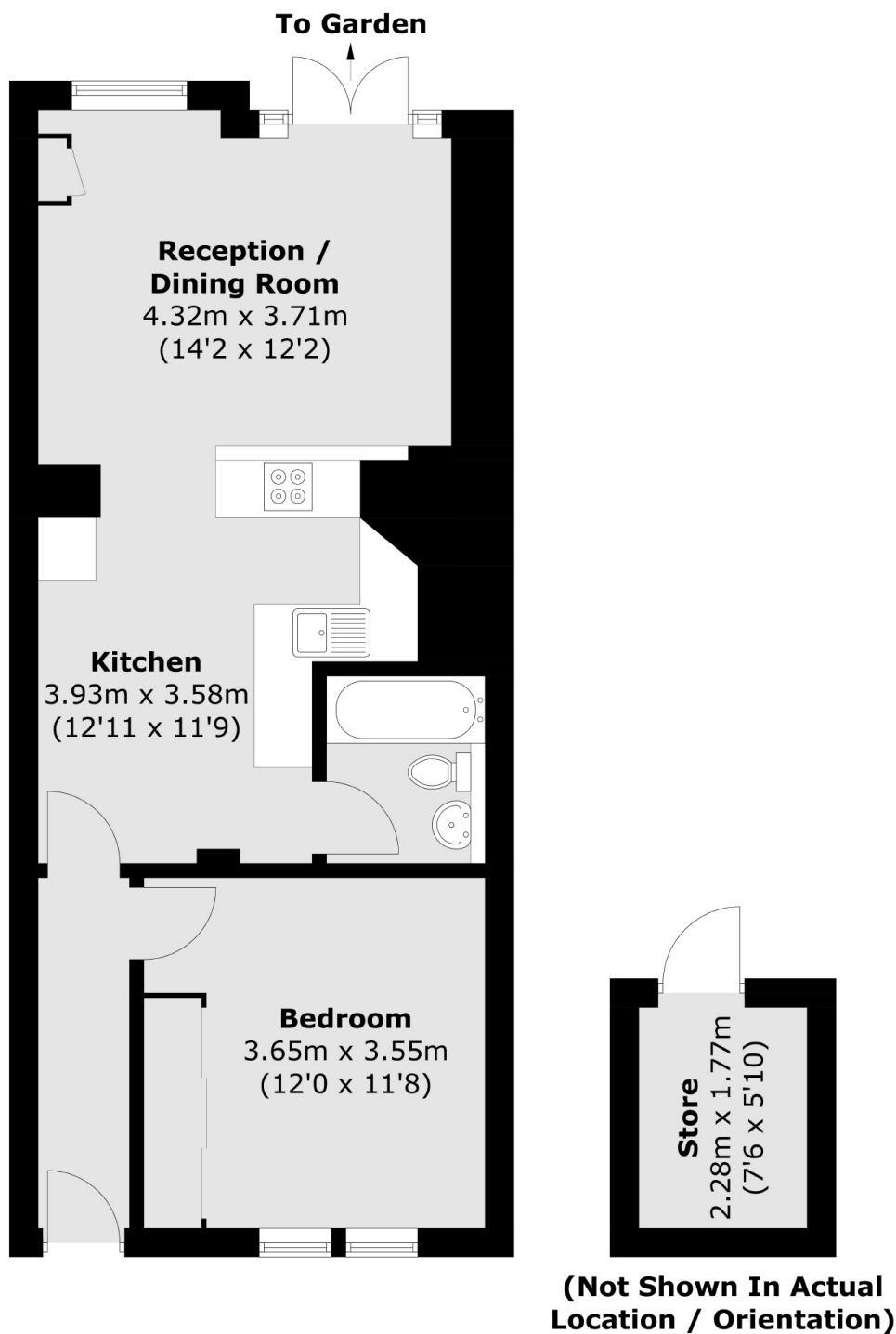
A fantastic one bedroom garden flat benefiting from its own private entrance and access onto a beautiful rear garden. There is a spacious open plan reception room offering space for dining and french doors that lead out onto the garden. Furthermore there is a large double bedroom to the front and a cellar for storage at the front.

Located in the centre of Kennington, just moments from pubs, eateries and local shops. High in community spirit, transport links are unbeatable with Kennington, Oval, Lambeth North and Vauxhall stations close by, within a short stroll of Kennington Park and within easy reach of the City and West End.

### Features

- One Bedroom
- Garden Flat
- Spacious Living Area
- Private Entrance
- No Onward Chain
- Excellent Location

# Kennington Road, London, SE11



Total area (approx.): 51.7 sq. m (556.5 sq. ft)  
Store area : 4.2 sq. m (45.2 sq. ft)