



Vassall Road, SW9

£350,000

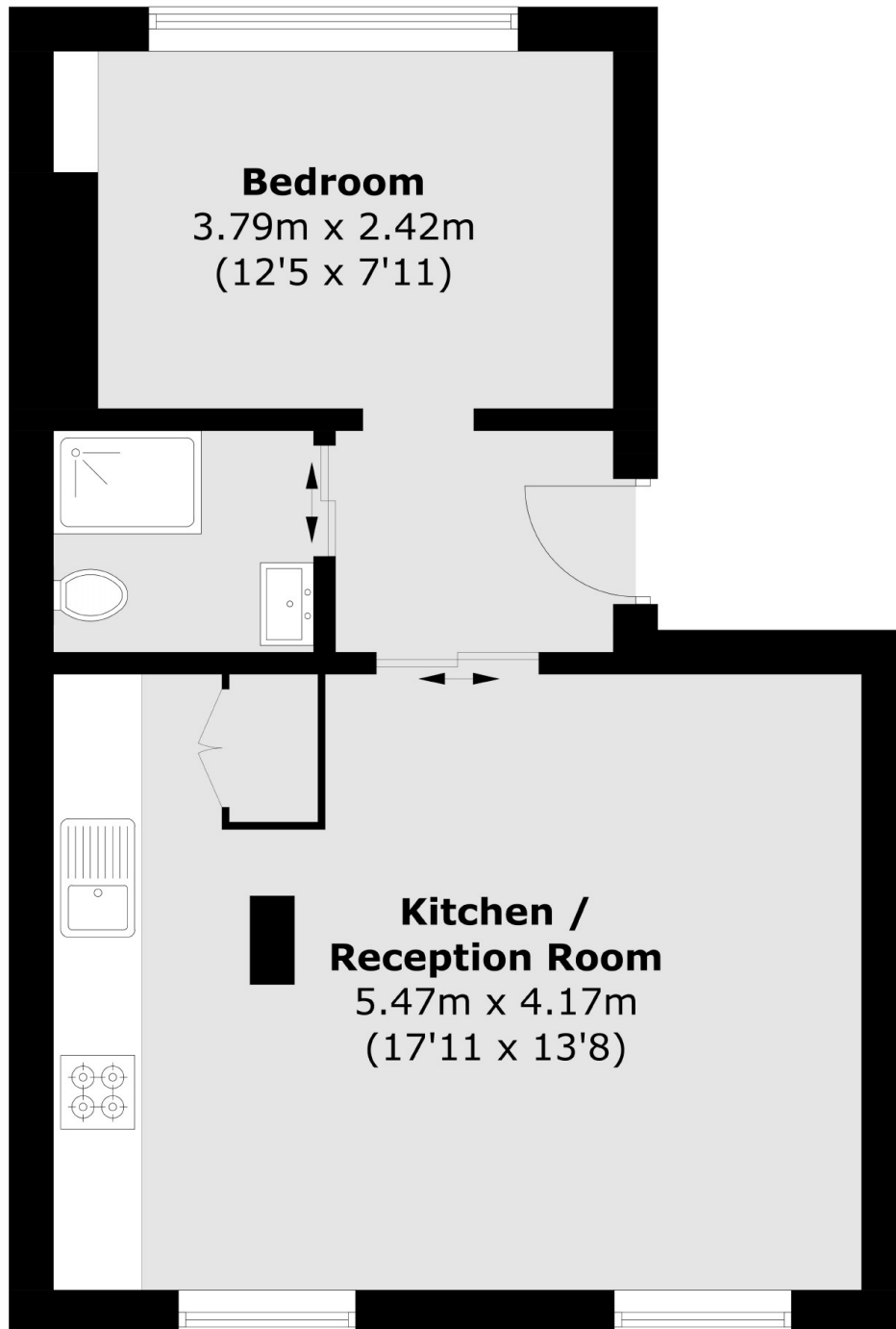
A charming one bedroom Georgian flat in excellent condition throughout. The property is flooded with natural light and has excellent character with wooden floors, exposed brickwork and a stylish modern bathroom. The open plan living room and kitchen has space for dining and the property has great view of St John The Devine Church to the front and Mimi Gardens to the rear.

Quietly located between Oval and Camberwell and within a ten minute walk of Oval Underground Station (Northern Line). This excellent location has an array of local shops, cafes, pubs and is just a short walk of both Kennington Park and Myatt's Field Park. There is an excellent amount of bus routes close by with access to the City, Victoria, Brixton and beyond.

Features

- One Bedroom
- Excellent Condition
- Great Location
- Open Plan Living
- Healthy Lease
- Character Features

Vassall Road,
London, SW9



Total area (approx.): 38.9 sq. m (418.7 sq. ft)

Dexters

Kennington
323 Kennington Road
London
SE11 4QE
Sales
0207 650 5102

Energy Rating: C. We aim to make our particulars both accurate and reliable. However they are not guaranteed; nor do they form part of an offer or contract. If you require clarification on any points then please contact us, especially if you're traveling some distance to view. Please note that appliances and heating systems have not been tested and therefore no warranties can be given as to their good working order.

 **RICS** | Regulated
Estate Agent
and Letting Agent

dexters.co.uk