



St. George Wharf, SW8
£2,650,000

Dexters



St. George Wharf, SW8

A magnificent three double bedroom duplex apartment solely occupying the 11th and 12th floors. The property has a remarkable amount of outdoor and reception space and is offered to the market with no onward chain.

At the heart of the property is a wonderful 27ft reception room with floor to ceiling windows and access onto a private terrace with uninterrupted views of the River Thames. If this wasn't enough, there is a spiral staircase that leads up to a show stopping reception room where you can relax and enjoy taking in the wonderful views. There is access onto a second, large wrap around roof terrace offering plenty of space and perfect for those who love to entertain.

The separate modern fitted kitchen has space for dining and combines brilliantly with the reception areas. There are three well proportioned double bedrooms, two of which have stylish ensuite bathrooms and a balcony. Furthermore there is a third bathroom and great storage throughout the property.

The property is in exceptional condition throughout and benefits from air conditioning. There is a 24 hour concierge on site, a lift, a number of restaurants and amenities on site including a Doctors surgery, a Dentist and a gym.

Features

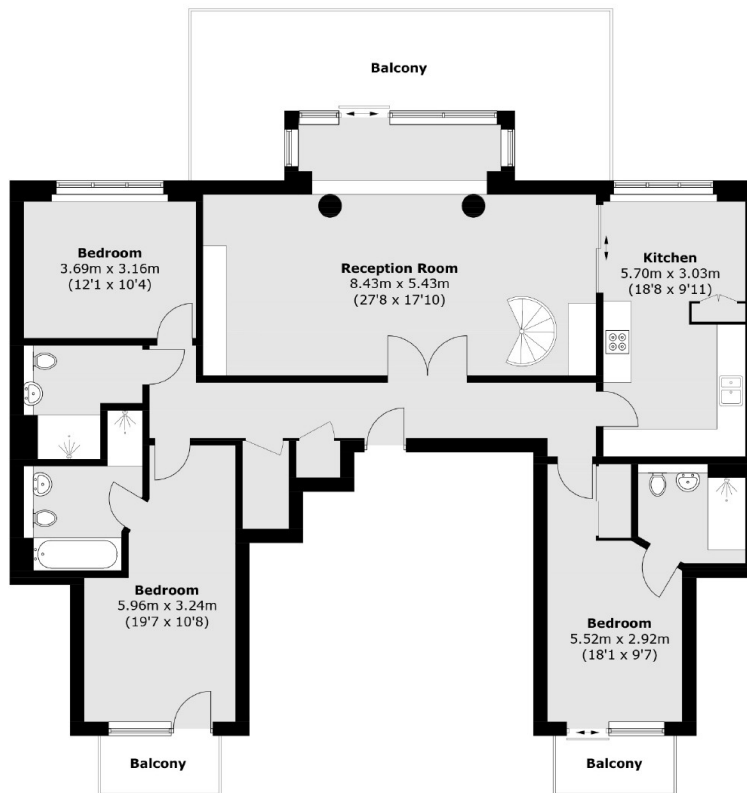
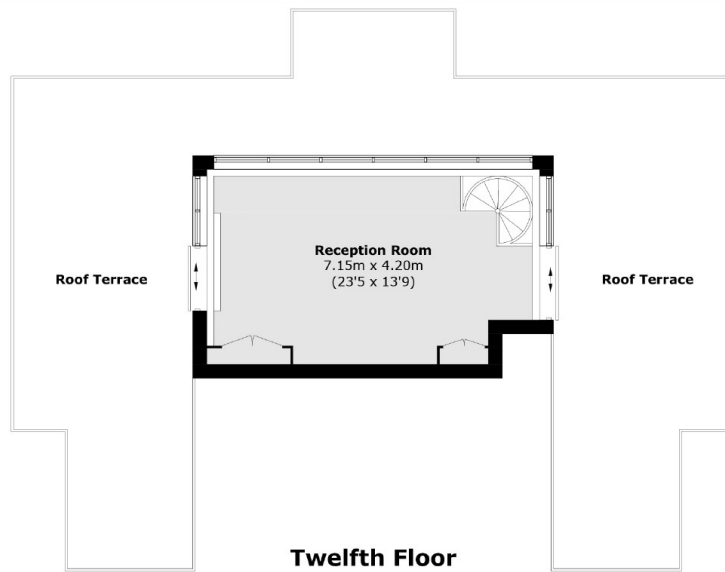
- Duplex Apartment
- Three Double Bedrooms
- 1,781sq.ft
- River Views
- Three Bathrooms
- Roof Terraces







St. George Wharf, London, SW8



Eleventh Floor

Total area (approx.): 165.5 sq. m (1,781.4 sq. ft)
Terrace / Balcony area (approx.): 124.3 sq. m (1,337.9 sq. ft)