



## Sidney Road, SW9

£799,950

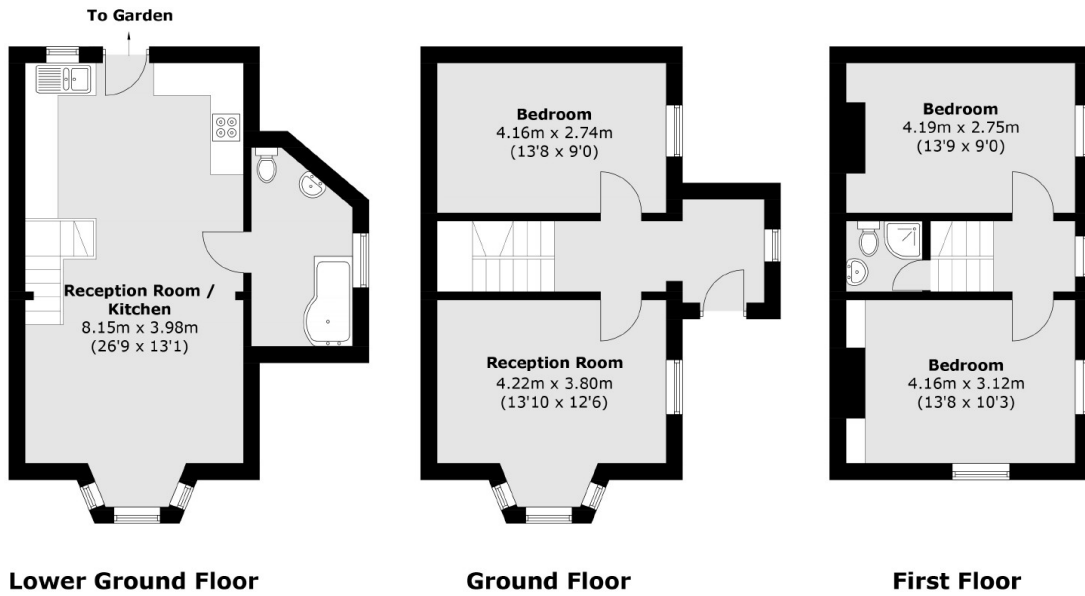
A bright three bedroom end of terrace Victorian home offered to the market with no onward chain. The property has excellent potential and benefits from a bay fronted reception room, two bathrooms and a spacious open plan kitchen/reception room which has direct access onto a private garden.

This wonderful location has unbeatable transport links, with Stockwell underground (Victoria & Northern Lines) just a short walk away. There are several local cafes, shops and restaurants close by and good access to both Clapham and Brixton.

### Features

Freehold  
Three Bedrooms  
No Onward Chain  
Two Bathrooms  
Excellent Location  
Character Features

# Sidney Road, London, SW9



Total area (approx.): 103.8 sq. m (1,117.1 sq. ft)