



Townsend Street, SE17

£325,000

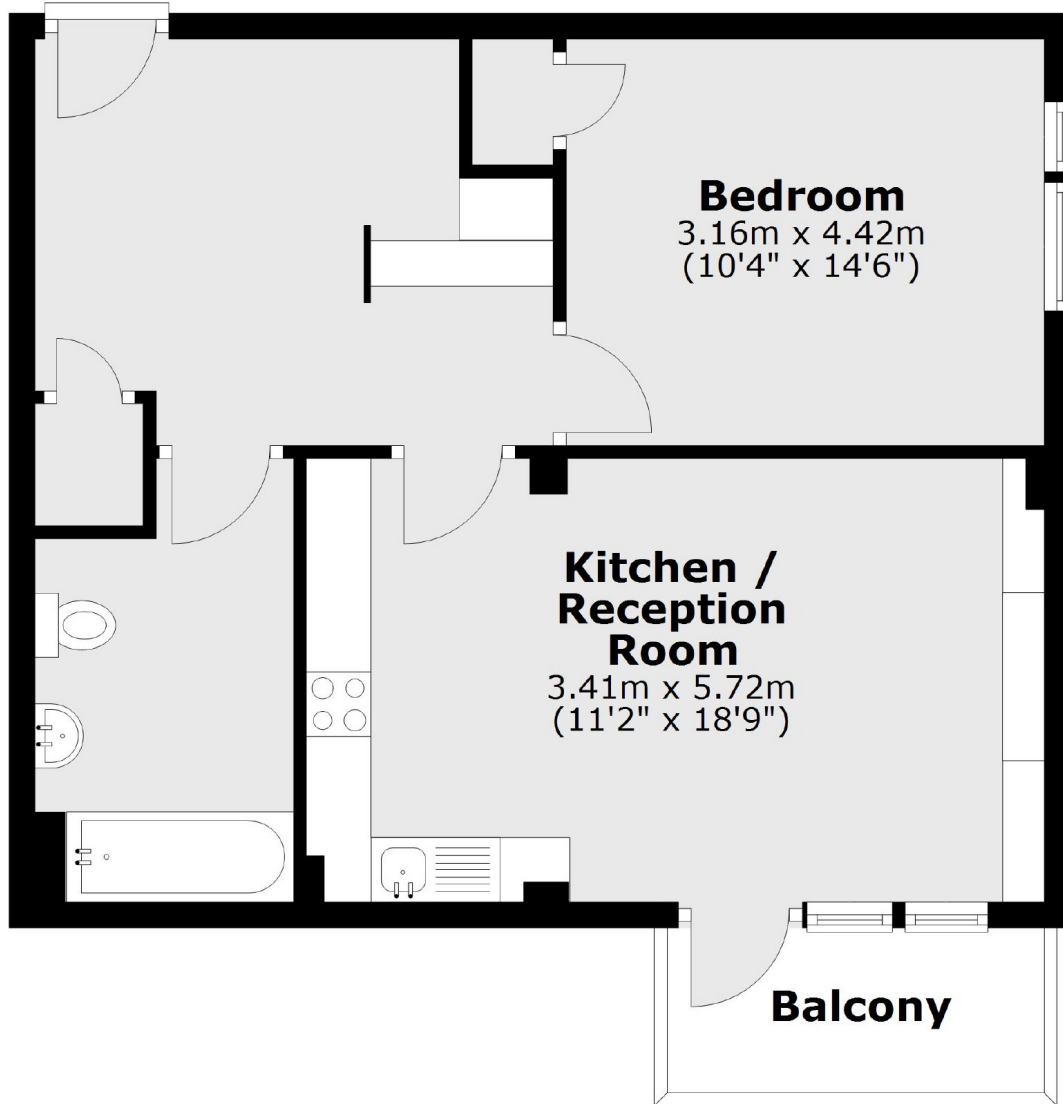
A spacious one bedroom apartment situated on the fifth floor of a secure modern development. The southwest facing aspect makes this an incredibly bright flat. There is a private balcony with far reaching undisturbed views and a further communal roof terrace.

Townsend Street is situated between Elephant and Castle and Bermondsey, offering easy access to Northern Line, Bakerloo Line and Thameslink services. Locally you will find markets, parks and an endless choice of restaurants, pubs and coffee shops.

Features

- One Double Bedroom
- Modern Development
- South West Facing
- Private Balcony
- Secure
- Communal Terrace

Townsend Street,
London, SE17



Main area: Approx. 52.5 sq. metres (564.7 sq. feet)
Plus balconies, approx. 4.0 sq. metres (43.5 sq. feet)

Dexters

Kennington
323 Kennington Road
London
SE11 4QE
Sales
0207 650 5102

Energy Rating: B. We aim to make our particulars both accurate and reliable. However they are not guaranteed; nor do they form part of an offer or contract. If you require clarification on any points then please contact us, especially if you're traveling some distance to view. Please note that appliances and heating systems have not been tested and therefore no warranties can be given as to their good working order.

 **RICS** | Regulated
Estate Agent
and Letting Agent

dexters.co.uk