



## Vauxhall Street, SE11

£700,000

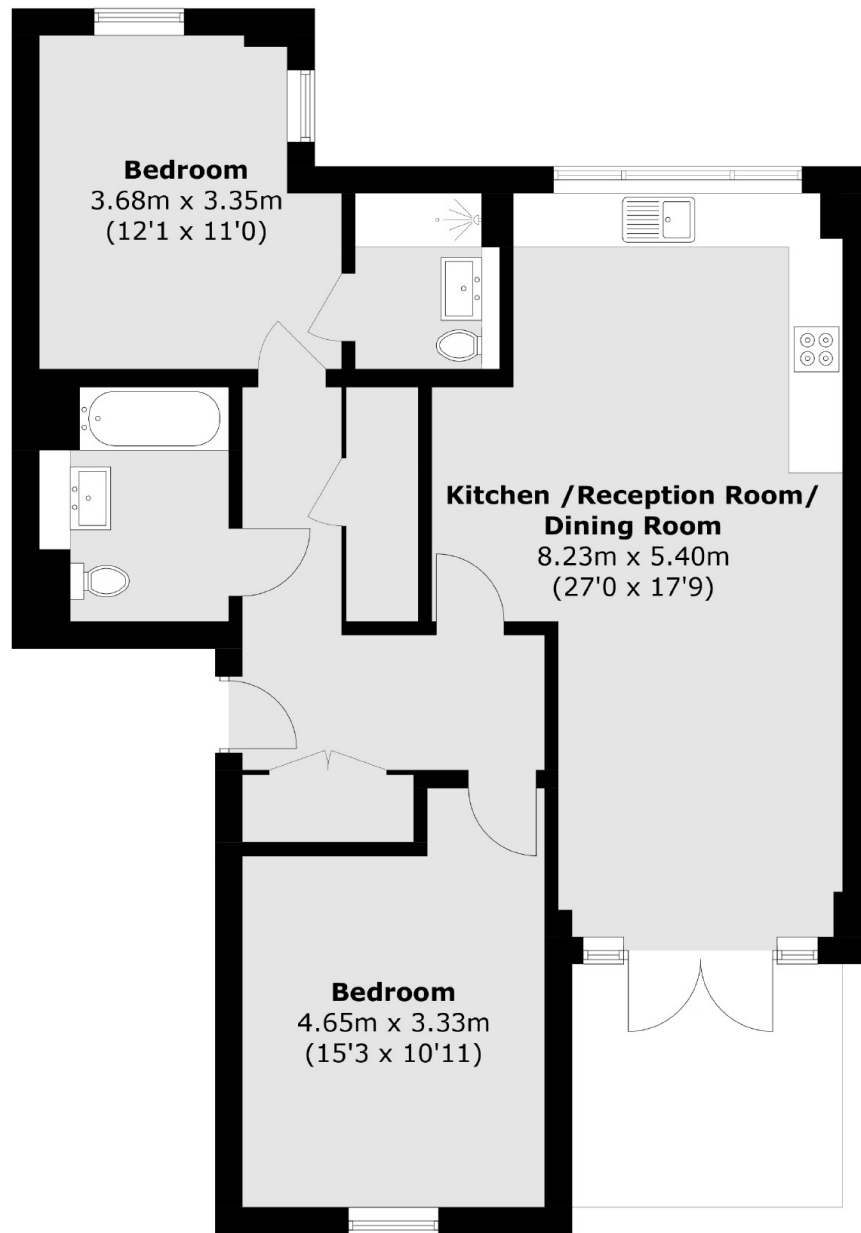
A large ground floor two double bedroom apartment, with two bathrooms and a balcony. There is a huge communal roof terrace with views across the London skyline. There is a lift in the building and you are extremely close to both Vauxhall and London Bridge

Vauxhall Street is close to the highly anticipated Oval Village and Vauxhall Station, offering both South West Railway and Victoria Line services. There is a wide range of pubs, restaurants and cafes locally. Convenient for Kennington, Waterloo and Battersea.

### Features

- Two Double Bedrooms
- Two Bathrooms
- Large Balcony
- Large Communal Roof Terrace
- Award Winning Developer
- Near 'Battersea Power Station'

# Vauxhall Street, London, SE11



## Ground Floor

Total area (approx.): 80.8 sq. m (869.7 sq. ft)