



## **Cleaver Square, SE11**

**£1,895,000**

**Dexters**



## Cleaver Square, SE11

A magnificent two/three bedroom Grade II Georgian home. Impeccably finished throughout, the house has an abundance of reception space and is being sold with no onward chain.

The ground floor has a wonderful, bright double length reception room which has two gorgeous fireplaces, parquet flooring and underfloor heating. The property has been extended to the rear with a sympathetic green roof, creating an outstanding space consisting of a high specification kitchen and dining area which is perfect for those who love to entertain. Bi-fold doors provide seamless access out onto a landscaped rear garden.

The basement was created by the current owners and is currently set out as a snug but could easily be a third bedroom with access to the garden. Furthermore there is a beautiful shower room and a utility room.

The first floor has a double bedroom with a fireplace and glorious views over the pretty square below. There is also a sumptuous family bathroom with a lovely roll top bath and a separate shower. The master bedroom is located on the top floor benefitting from built in wardrobes, a fireplace and access to a stylish ensuite shower room.

Great attention to detail has gone into finishing and future proofing this beautiful home, ready for the next buyers to simply move in.

### Features

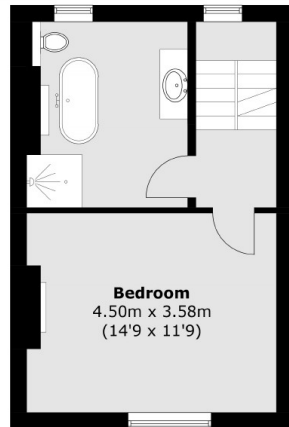
- Grade II Listed
- Exceptional Finish
- Three Bathrooms
- Cleaver Square
- Wonderful Reception Space
- No Onward Chain



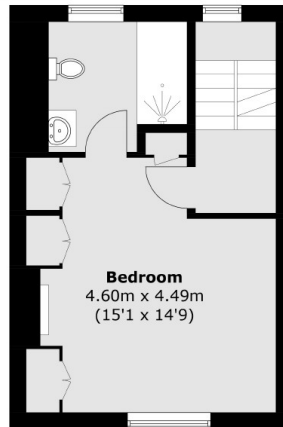




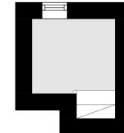
# Cleaver Square, London, SE11



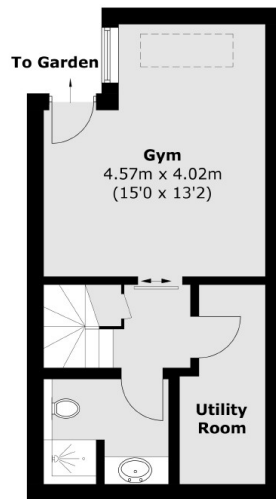
**First Floor**



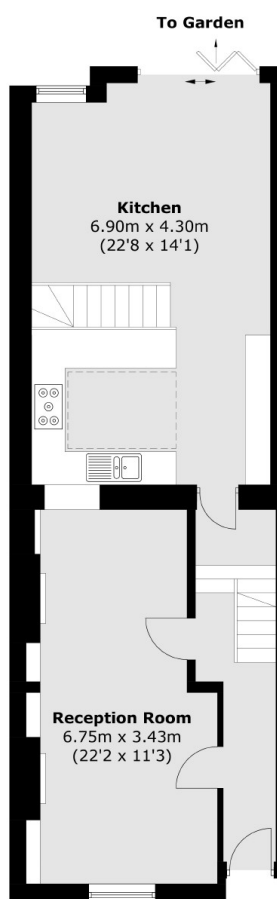
**Second Floor**



**Third Floor**



**Basement**



**Ground Floor**

Total area (approx.): 159.9 sq. m (1721.0 sq. ft)