



Camberwell New Road, SE5

£1,675,000

A classic four bedroom Grade II listed Georgian family home spanning some 2,452sq.ft. Complete with well proportioned rooms and abundance of reception space, the property has an exceptionally large rear garden fit for a growing family.

Camberwell New Road is a fantastic location just moments from the green spaces of Kennington Park and Myatt's Fields Park. Oval tube (Northern Line) is within walking distance, providing easy access into Town and the City. Buzzing Camberwell is a short walk away with it's array of restaurants and pubs.

Features

- Georgian Home
- Large Garden
- Four Double Bedrooms
- Excellent Reception Space
- No Onward Chain
- 2,452sq.ft



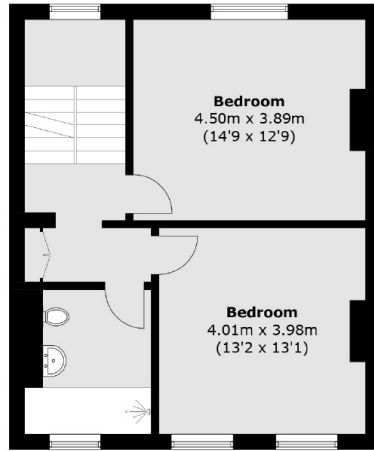
Camberwell New Road, SE5

The spacious raised ground entrance hall leads through into a gorgeous double length reception room with plenty of character and benefitting from a south facing aspect with views over the large rear garden. There is a separate w/c and access down to the lower ground floor where you will find a vibrant living/ dining space that combines brilliantly with the stylish stainless steel kitchen. There is wonderful storage, a utility room and direct access out onto the wonderful south facing rear garden which has side access and is actually remarkably quiet.

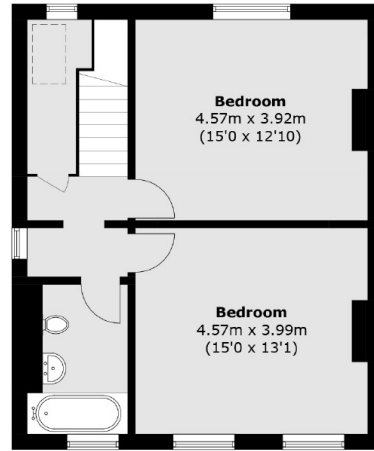
There are four double bedrooms and three bathrooms split over the first and second floors, perfect for families or a study space for those that work from home. The house has been a happy family home for the past 28 years and is in great condition, ready for the next owners to make it their own.



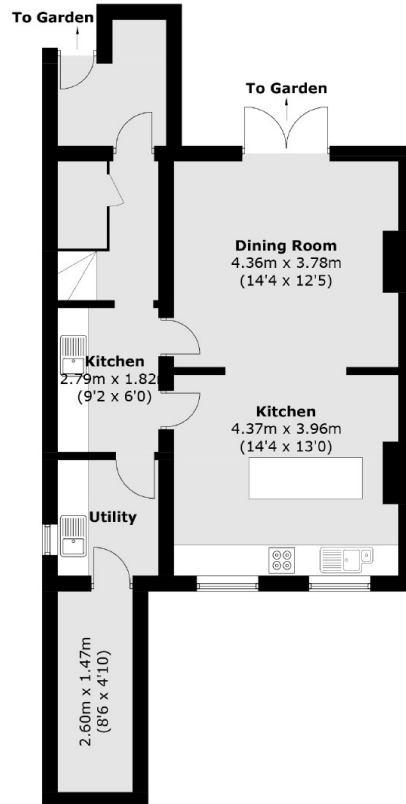
Camberwell New Road, London, SE5



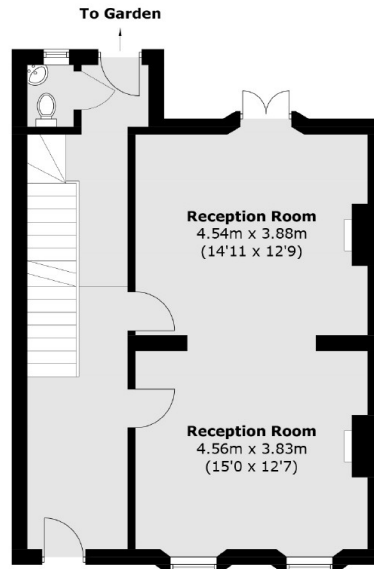
First Floor



Second Floor



Lower Ground Floor



Ground Floor

Total area (approx.): 227.8 sq. m (2,452.1 sq. ft)