



Sayer Street, SE17

£549,950

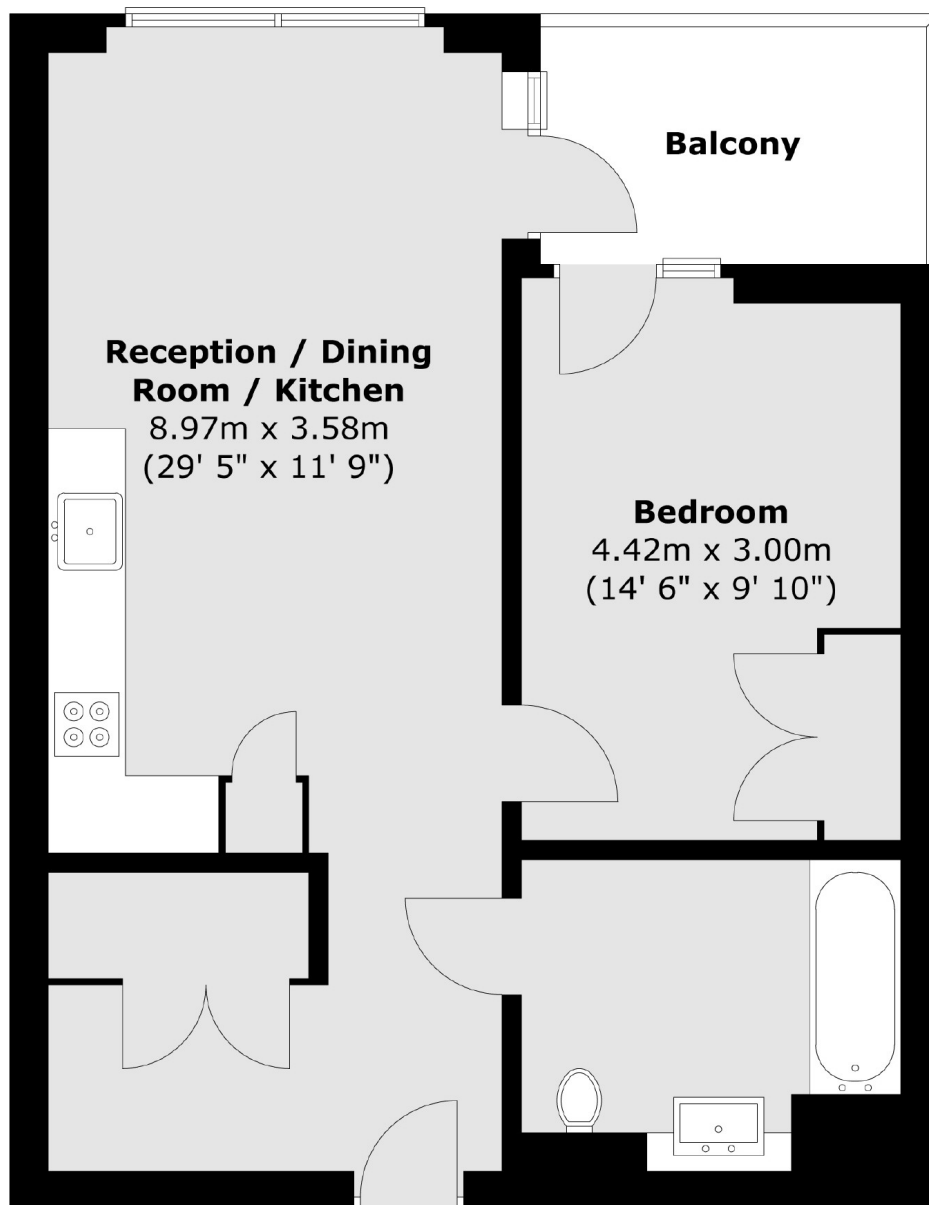
A stylish one bedroom modern apartment located on the 11th floor with excellent views. Facing south, the property is flooded with natural light and has a spacious open plan kitchen/ reception room with space for dining. There is access onto a private balcony, a beautiful bathroom and good storage throughout. Further benefits include a concierge, a residence gym and meeting room. Sold with no onward chain.

Conveniently located just moments from Elephant & Castle National Rail and Underground stations (Bakerloo/ Northern Lines). This exciting location has many bars, restaurants and local shops on its door step and plenty more to come as the Elephant Park vision comes to life.

Features

- One Bedroom
- Concierge
- South Facing
- Gym
- No Onward Chain
- Balcony

Sayer Street, London, SE17



Total area (approx.) : 54.5 sq. m (587 sq. ft)
Total balcony area (approx.) : 6.6 sq. m (71 sq. ft)