



## Canterbury Place, SE17

£525,000

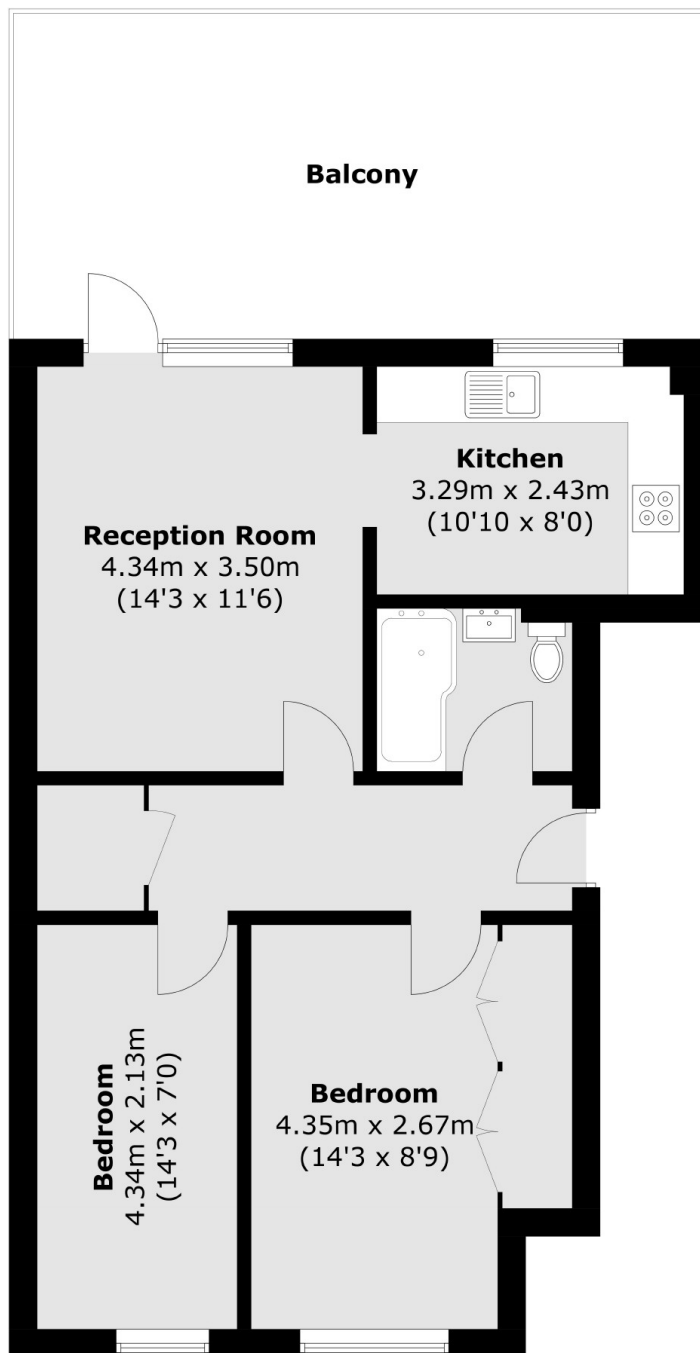
A first floor flat with two double bedrooms and an impressive private south east facing terrace. The property is flooded with light and has a large reception room which combines brilliantly with the separate kitchen, benefitting from direct access onto the terrace, which is perfect for those who love to entertain. Furthermore the property has plenty of built in storage.

Quietly tucked away within easy reach of Elephant and Castle and Kennington, arguably one of the most exciting areas, with its rapid growth and vast array of local trendy amenities. Access to Northern and Bakerloo Lines provide easy access into the West End & City.

### Features

- Private Terrace
- Two Double Bedrooms
- Excellent Location
- Great Condition
- Ample Storage
- 664 Square Foot

# Canterbury Place, London, SE17



Total area (approx.): 61.7 sq. m (664.1 sq.ft)  
Balcony (approx.): 26.0 sq. m (279.8 sq. ft)