



Vauxhall Walk, SE11

£755,000

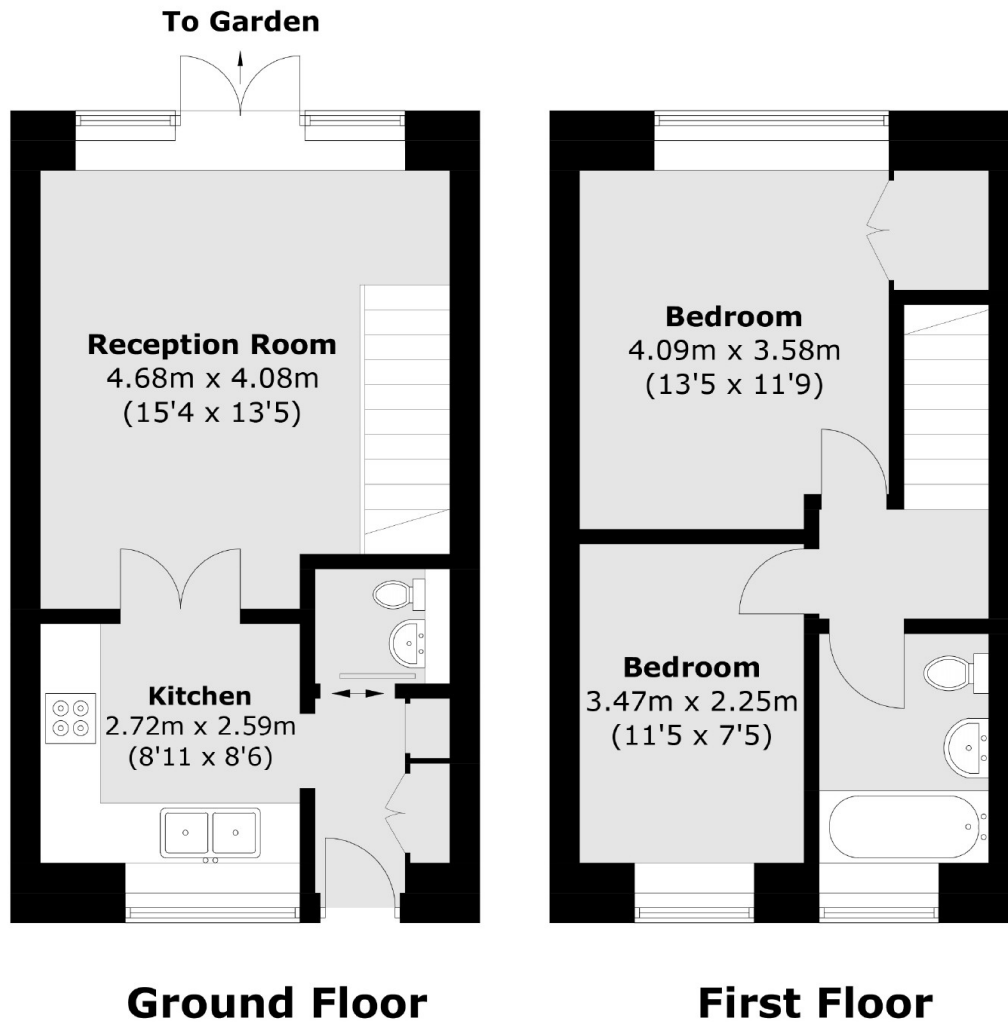
A stylish two double bedroom mid terrace home offered to the market chain free. The property is in excellent condition throughout, benefitting from a stylish kitchen to the front and a lovely reception room to the rear with french doors that lead out onto a maintenance free rear garden. There is a smart family bathroom, a downstairs WC and a loft which is currently used for storage but has great potential for extension to create a third bedroom and ensuite.

Vauxhall Walk is a quiet street, just a short walk from the Pleasure Gardens and Vauxhall mainline and underground stations (Victoria Line). Lovely Pedlars Park is just opposite and the house is just moments from the River Thames, local shops, Cafes and further transport links.

Features

- Freehold House
- Excellent Condition
- No Onward Chain
- Central Location
- Private Garden
- Extension Potential

Vauxhall Walk, London, SE11



Total area (approx.): 60.5 sq. m (651.2 sq. ft)