



## Kennington Park Road, SE11

£550,000

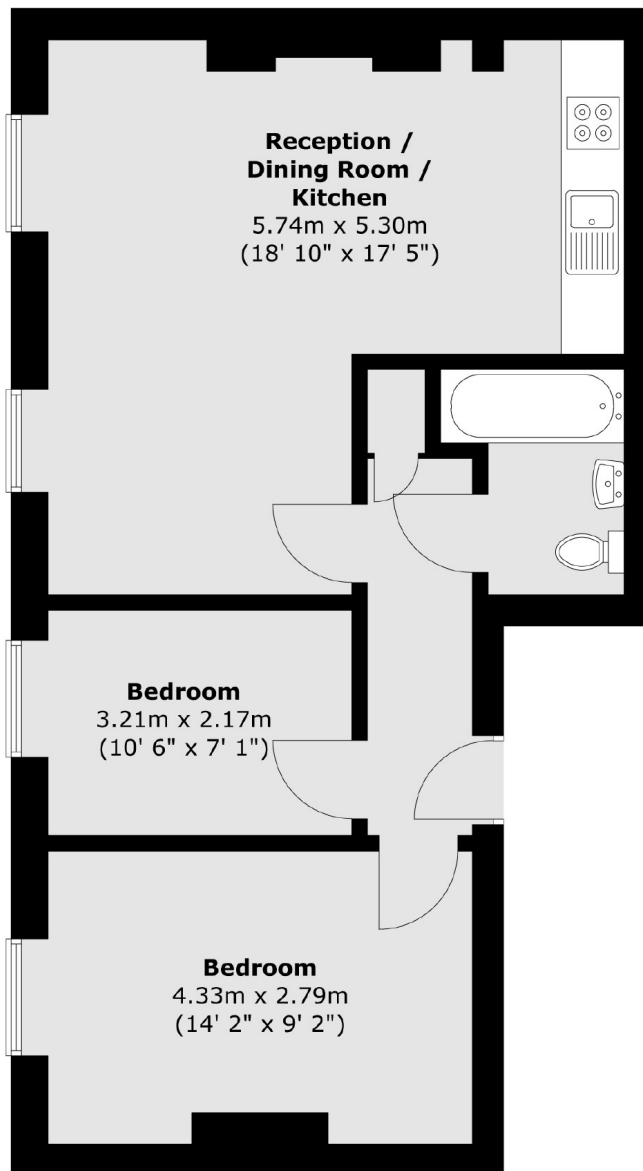
A fantastic two bedroom Georgian Conversion with fabulous potential for the next buyer to make it their own. Flooded with natural light, the property has beautiful high ceilings a wonderful open plan reception room and a share of the freehold

Kennington Park Road is a lovely tree lined street, just moments from pubs, eateries and local shops. High in community spirit, transport links are unbeatable with Kennington, Oval and Vauxhall stations close by, within a short stroll of Kennington Park and within easy reach of the City and West End.

### Features

- Two Bedrooms
- Share of Freehold
- Georgian Conversion
- No Onward Chain
- Excellent Potential
- Great Location

# Kennington Park Road, London, SE11



Total area (approx.) : 51.7 sq. m (556 sq. ft)