



## East Street, SE17

£495,000

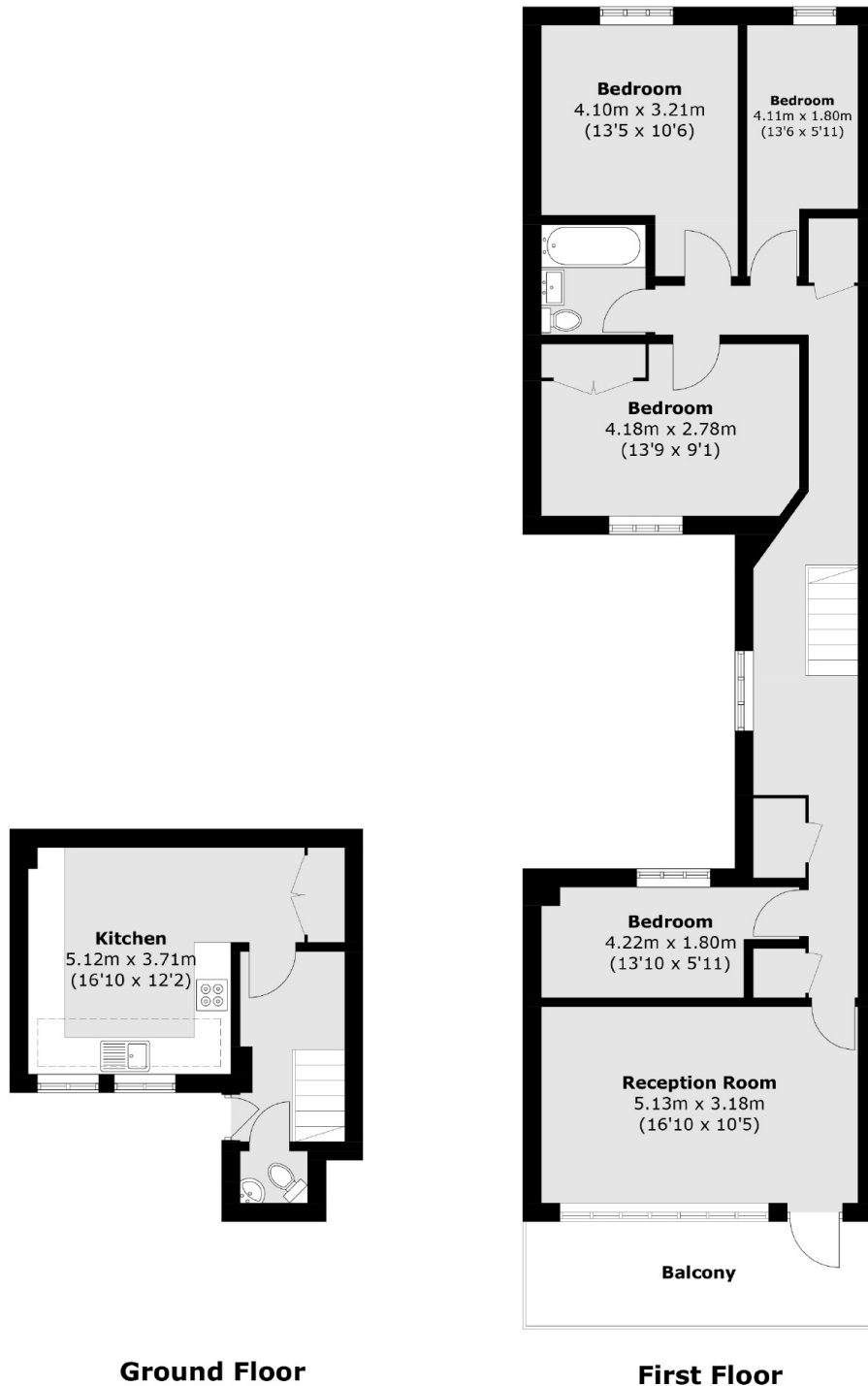
An incredibly spacious four double bedroom purpose built ex local authority duplex at just over 1000 sq ft with large reception, separate eat in kitchen and balcony. This flat is being sold with no onward chain.

East Street is wonderfully located providing excellent access to the city and beyond with a great selection of transport links close by. There are a number of cafés, local shops and amenities on your doorstep including beautiful Burgess Park.

### Features

- Four Bedrooms
- Split Level
- Eat In Kitchen
- Private Balcony
- Great Location
- No Onward Chain

# East Street, London, SE17



Total area (approx.): 99.2 sq. m (1,078.6 sq. ft)  
Balcony : 9.6 sq. m (103.3 sq. ft)