



## South Island Place, SW9

£339,950

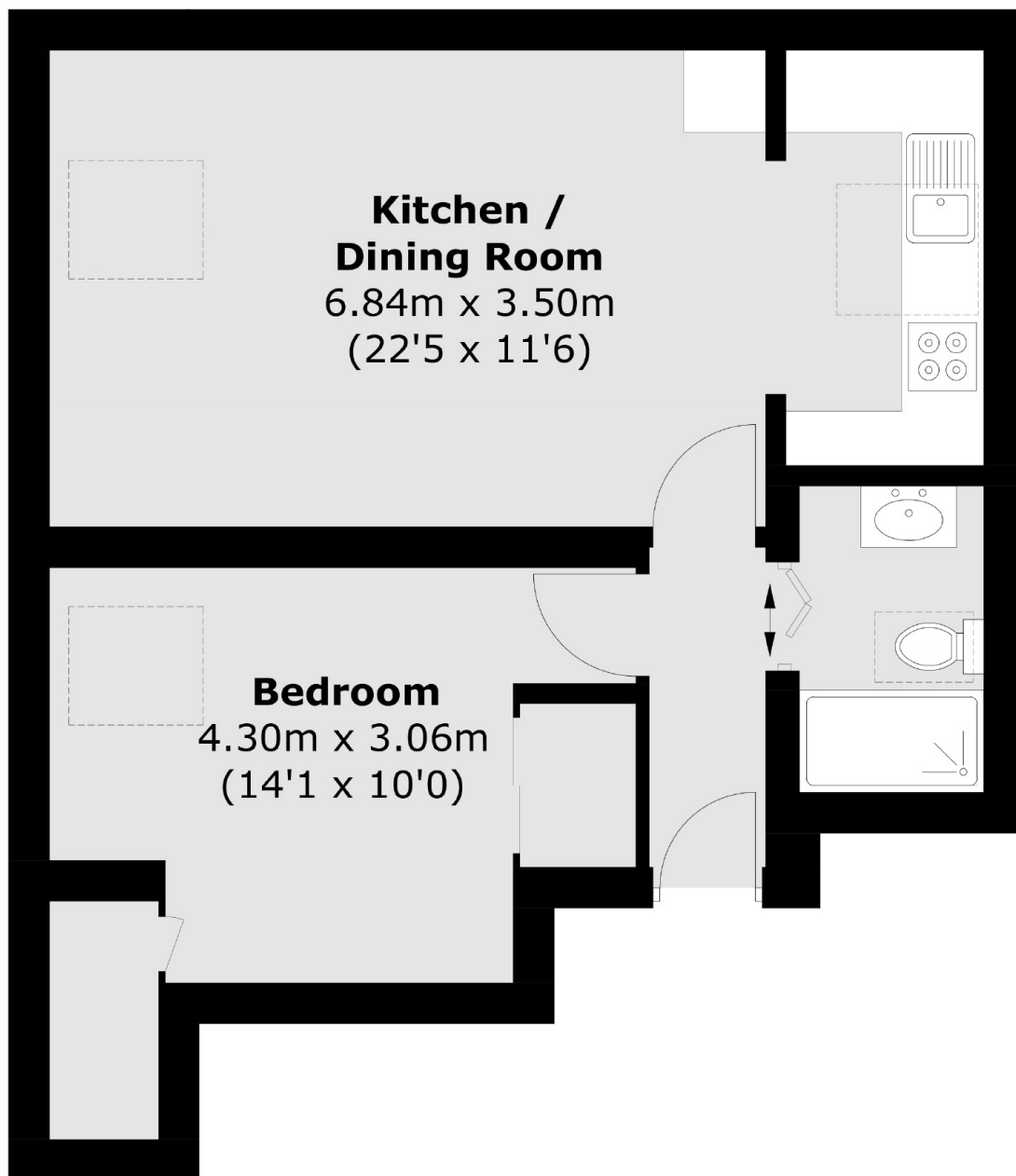
A fantastic, well proportioned one bedroom top floor flat in great condition throughout. There is a lovely open plan reception room which combines brilliantly with the modern fitted kitchen. The flat is flooded with natural light via large Velux windows and it has a share of the freehold as well access to communal gardens. Furthermore there is a good amount of storage throughout and it is being sold with no onward chain.

Quietly nestled between both Clapham Road and Brixton Road. This brilliantly connected property is within a short walk of Oval and Stockwell tube stations, plenty of bus links and the green spaces of Kennington park.

### Features

- Share of Freehold
- One Bedroom
- Bright and Spacious
- Excellent Location
- No Onward Chain
- Communal Garden

# South Island Place, London, SW9



Total area (approx.): 44.1 sq. m (474.7 sq. ft)