



Hayles Street, SE11

£425,000

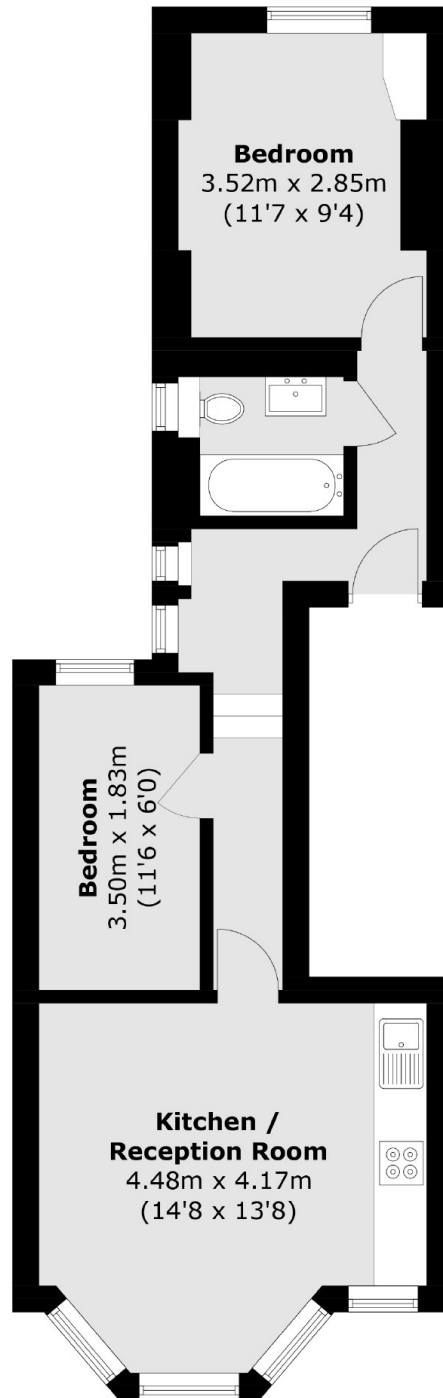
A charming two bedroom first floor Victorian conversion. The property is in great condition throughout, benefitting from a beautifully bright bay front reception room with an open plan kitchen, zoned to great space for both living and dining areas. Sold with no onward chain.

Hayles Street is incredibly well connected for access to Elephant and Castle and the City. Extremely quiet, this fabulous location is perfect for those looking for a peaceful location with the balance of quick access into town.

Features

- Share of Freehold
- Excellent Location
- No Onward Chain
- Great Condition
- Open Plan Living
- Victorian Conversion

Hayles Street, London, SE11



Total area (approx.): 46.4 sq. m (499.4 sq. ft)