



## Aulton Place, SE11

£1,125,000

A wonderful three bedroom townhouse in excellent condition throughout. Split over three floors, this property has an abundance of reception space, two bathrooms, well proportioned bedrooms and access onto a lovely rear garden.

Picturesque Aulton Place is a peaceful street, centrally located in the centre of Kennington, just moments from pubs, eateries and local shops. High in community spirit, transport links are unbeatable with Kennington, Oval, Lambeth North and Vauxhall stations close by, within a short stroll of Kennington Park and within easy reach of the City and West End.

### Features

- Freehold
- Three Bedrooms
- Two Bathrooms
- Excellent Condition
- Central Kennington Location
- Flexible Living Space



## Aulton Place, SE11

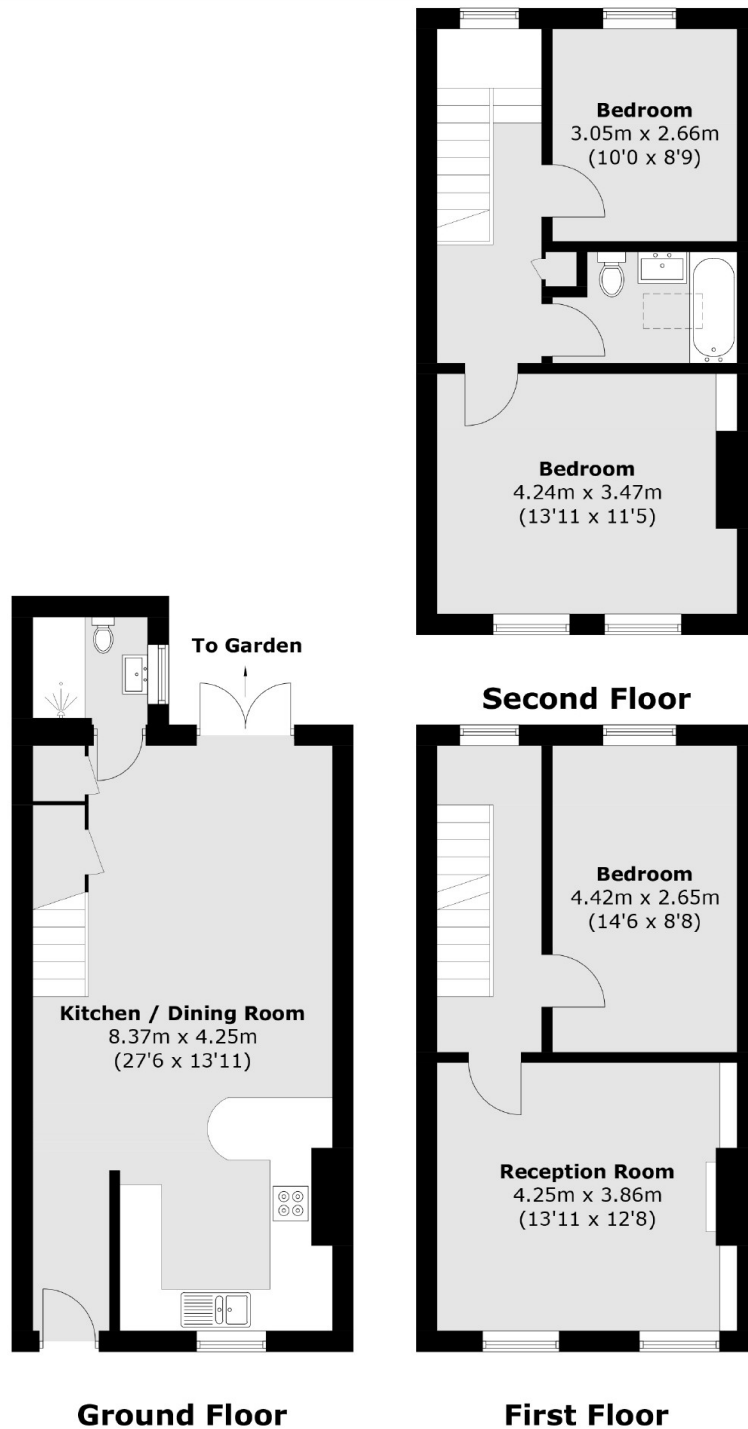
The ground floor is the perfect space for the family to come together. This spacious room has a lovely kitchen to the front which benefits from great storage and plenty of work top space. This fantastic entertaining space has direct access onto a pretty rear garden with a lawn, shrubs and space for outside dinging. Furthermore there is good storage and downstairs shower room.

The first floor reception room, is a lovely space to relax and unwind, benefitting from high ceilings, a feature fire place with a beautiful surround and two large sash windows that draw in lots of natural light. There is a double bedroom to the rear with views over the garden. The large master bedroom is located on the top floor where there is another double bedroom and a stylish family bathroom.

This excellent home has been really well looked after. Beautifully decorated, it really does leave buyers very little to do but move in.



# Aulton Place, London, SE11



Total area (approx.): 111.7 sq. m (1,202.4 sq. ft)