



Burton Road, SW9

£750,000

A remarkably well finished two double bedroom period conversion flat arranged over three floors. This property provides the perfect balance of period character features with modern stylish decor. The open plan kitchen reception is a stunning space to entertain in or relax around the wood burner.

Leafy Burton Road is just moments from beautiful Myatt's Fields Park, perfect for those seeking a peaceful location on the cusp of zone one. There are a number of local shops close by and access to excellent transport links.

Features

- Share Of Freehold
- Split Level
- Character Features
- Open Plan Living
- Excellent Condition
- End Of Terrace



Burton Road, SW9

This well proportioned home has been finished with meticulous attention to detail. The large master bedroom on the top floor has deep built in wardrobes and a glamorous en suite. The open plan kitchen reception room on the second floor is the real heartbeat of this home. The stylish fitted kitchen has ample storage and worktop space and the reception room benefits from natural light from the characterful sash windows. Also on this floor is the family bathroom with a luxurious roll top bath. There is an open tread wooden staircase along with fabulous parquet flooring throughout this home which finishes off the look perfectly.

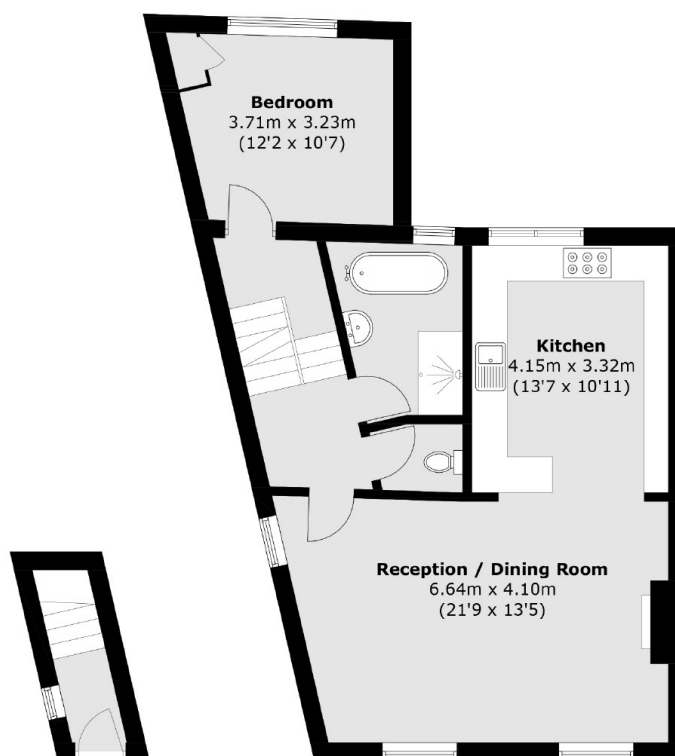
The beautiful Victorian building in which the flat occupies the top three floors is also on the end of the terrace.



Burton Road, London, SW9



Second Floor



Ground Floor

First Floor

Total area (approx.): 107.0 sq. m (1,151.6 sq. ft)
(Excluding Eaves)