



Stockwell Gardens Estate, SW9

£339,950

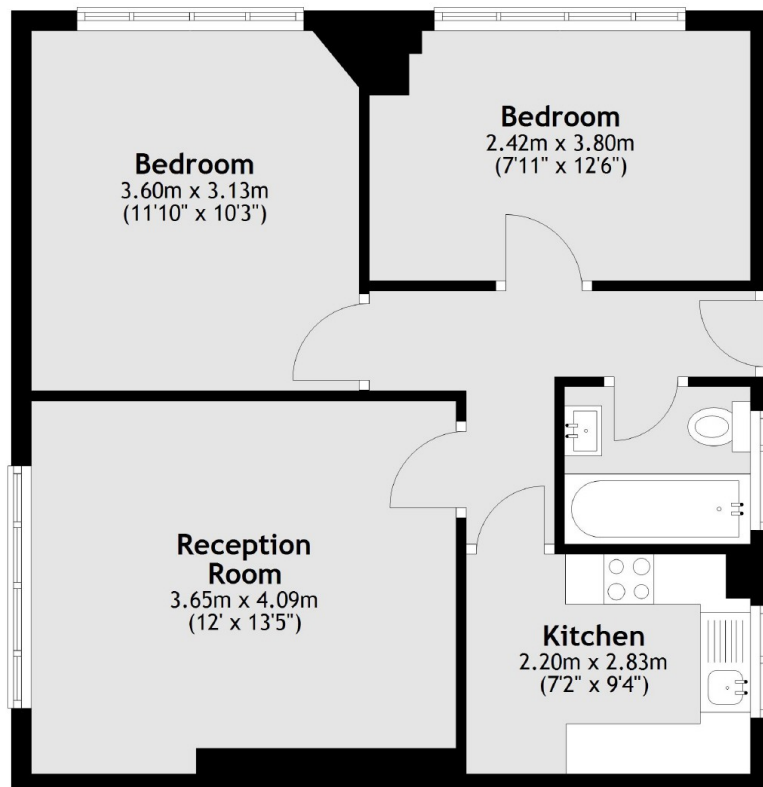
A bright two double bedroom purpose built flat. This well laid out home has a spacious living room providing space for both living and dining areas, a separate kitchen and it is being sold with no onward chain.

Perfectly located just moments from Stockwell Tube Station (Victoria & Northern Lines) and within the ever popular Stockwell conservation area. There are a number of bars, restaurants and coffee shops nearby with access to many bus links to towards Clapham, City and West End.

Features

- Two Bedrooms
- Lift
- No Onward Chain
- Great location
- Fantastic Potential

Stockwell Gardens Estate, London, SW9



Total area: approx. 53.2 sq. metres (573.0 sq. feet)