



## Stockwell Road, SW9

£499,950

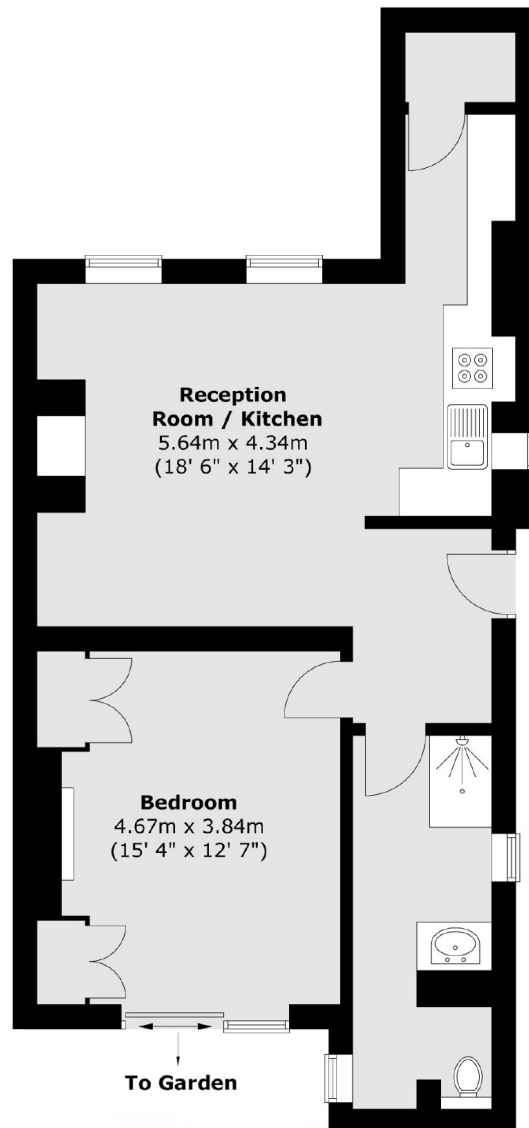
An excellent one bedroom garden flat in fantastic condition throughout. Flooded with natural light the property has its own private entrance and a spacious reception room to the front with a gorgeous log burner and space for both living and dining areas. The modern kitchen has great storage and worktop space, perfect for those who love to cook and entertain. Furthermore there is a stylish shower room with underfloor heating, a good amount of storage throughout and a large bedroom to the rear which benefits from direct access onto a large rear garden.

Perfectly located just moments from Stockwell Tube Station (Victoria & Northern Lines) and within the ever popular Stockwell conservation area. There are a number of bars, restaurants and coffee shops nearby with access to many bus links to towards Clapham, City and West End.

### Features

Garden Flat  
Character  
Share of Freehold  
647sq.ft  
Excellent Condition  
Wonderful Location

Stockwell Road,  
London, SW9



Total area (approx.) : 60.1 sq. m (647 sq. ft)