



New Union Square, SW11

£1,250,000

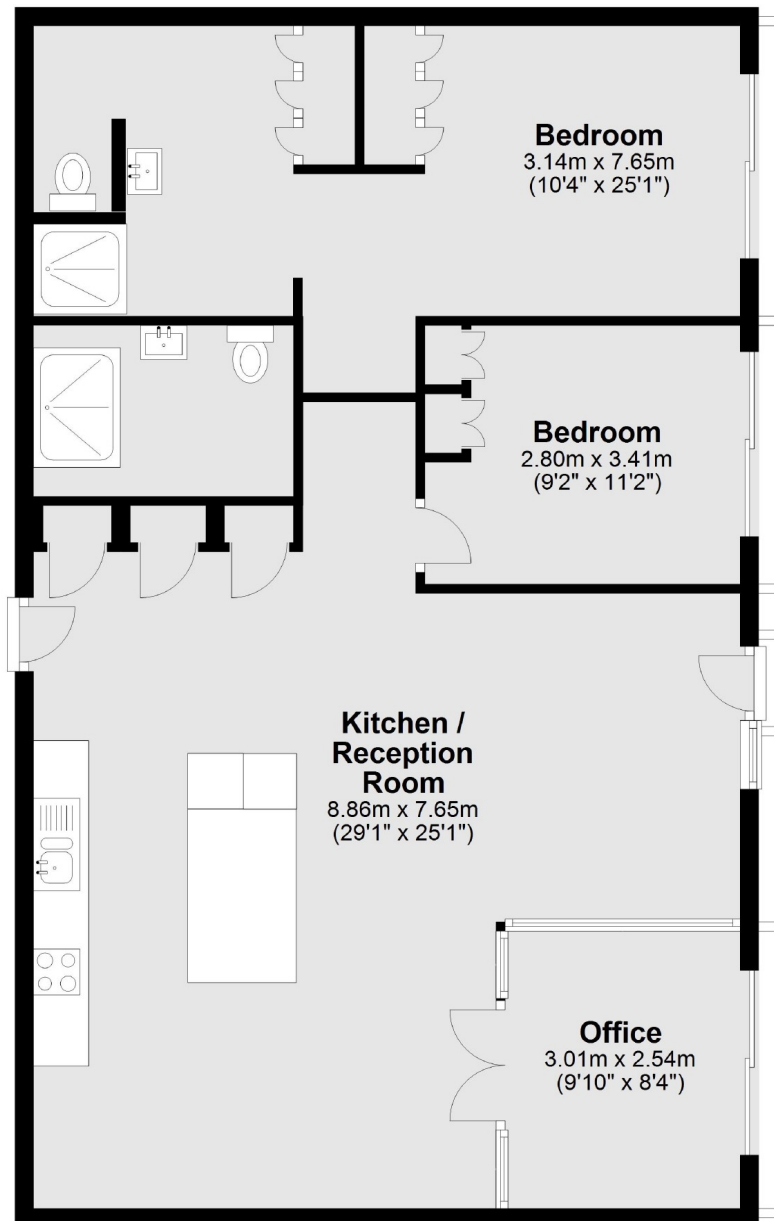
A beautiful modern two double bedroom apartment sold with no onward chain. The apartment is over 98sq.m and benefits from a spacious reception room, combined with a stylish modern kitchen and great storage. A wonderful office space has been created, which is perfect for those who work from home. Furthermore there are some excellent details including parquet flooring, modern fittings and floor to ceiling windows that draw in lots of natural light. Residence have access to 24 Hour Concierge, a health spa, indoor/outdoor swimming pool, cinema and meeting rooms.

Thriving Nine Elms is one of the most exciting London Neighbourhoods. Located just moments from the American Embassy and an array of local shops bars and restaurants. This wonderful location has unbeatable transport links including Nine Elms Tube Station(North Line) and easy access to Vauxhall Mainline and Tube (Victoria Line).

Features

- Two Double Bedrooms
- Concierge
- Sky Pool
- No Onward Chain
- Numerous On Site Facilities
- High Specification

New Union Square, London, SW11



Total area: approx. 98.2 sq. metres (1056.9 sq. feet)