



Wigton Place, SE11

£995,000

A fabulous modern three double bedroom mews house sold with no onward chain. Split over three floors this versatile home has three bathrooms, a stylish and contemporary finish and energy saving solar panels.

Tucked away in the heart of Kennington, Wigton Place is well positioned within walking distance of both Kennington tube station and the city. There are a number of shops, restaurants and pubs just a short walk away located at Kennington cross.

Features

- Three Double Bedrooms
- Freehold Mews House
- Excellent Condition
- Central Location
- Gated Development
- Building Guarantee



Wigton Place, SE11

The welcoming entrance hall leads through into a spacious double bedroom and has access to the family bathroom. Furthermore, there is a utility room and great storage.

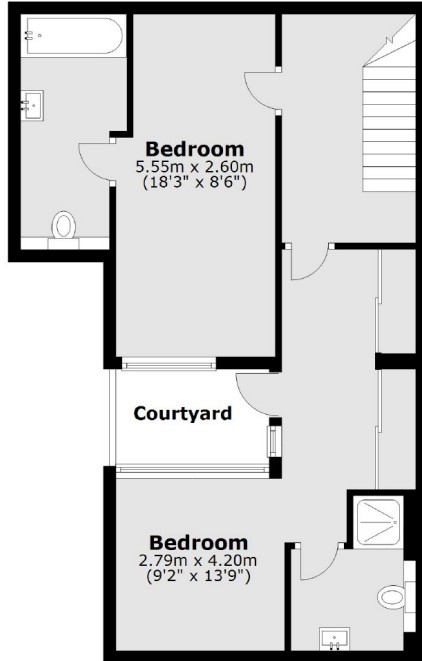
Leading down to the lower ground floor via a striking staircase there is the master bedroom with built in wardrobes and is flooded with natural light via the courtyard. There is a further double bedroom which also benefits from an ensuite bathroom. The first floor is dedicated to the large reception space, combined with the sleek modern fitted kitchen. This is an exceptionally bright space with vaulted ceilings and is a fabulous space to entertain.

The property still has a BLP building warranty in place and enjoys access to the landscaped courtyard. There is an intercom system controlling the gated entrance to the front of the development.

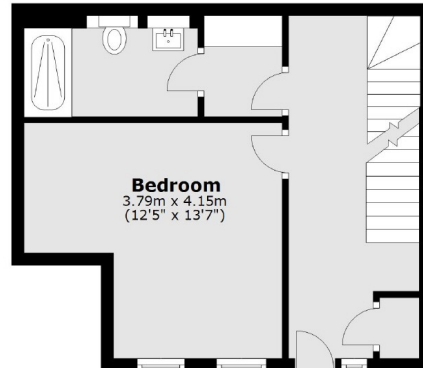


Wigton Place, London, SE11

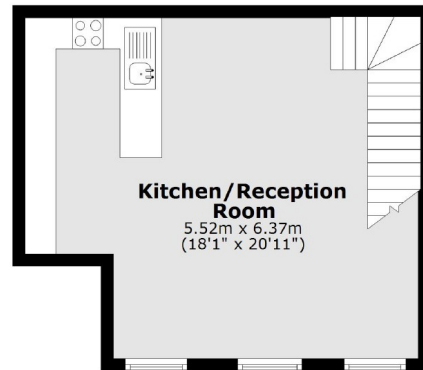
Lower Ground Floor



Ground Floor



First Floor



Total area: approx. 116.4 sq. metres (1253.4 sq. feet)