



## Black Prince Road, SE11

£425,000

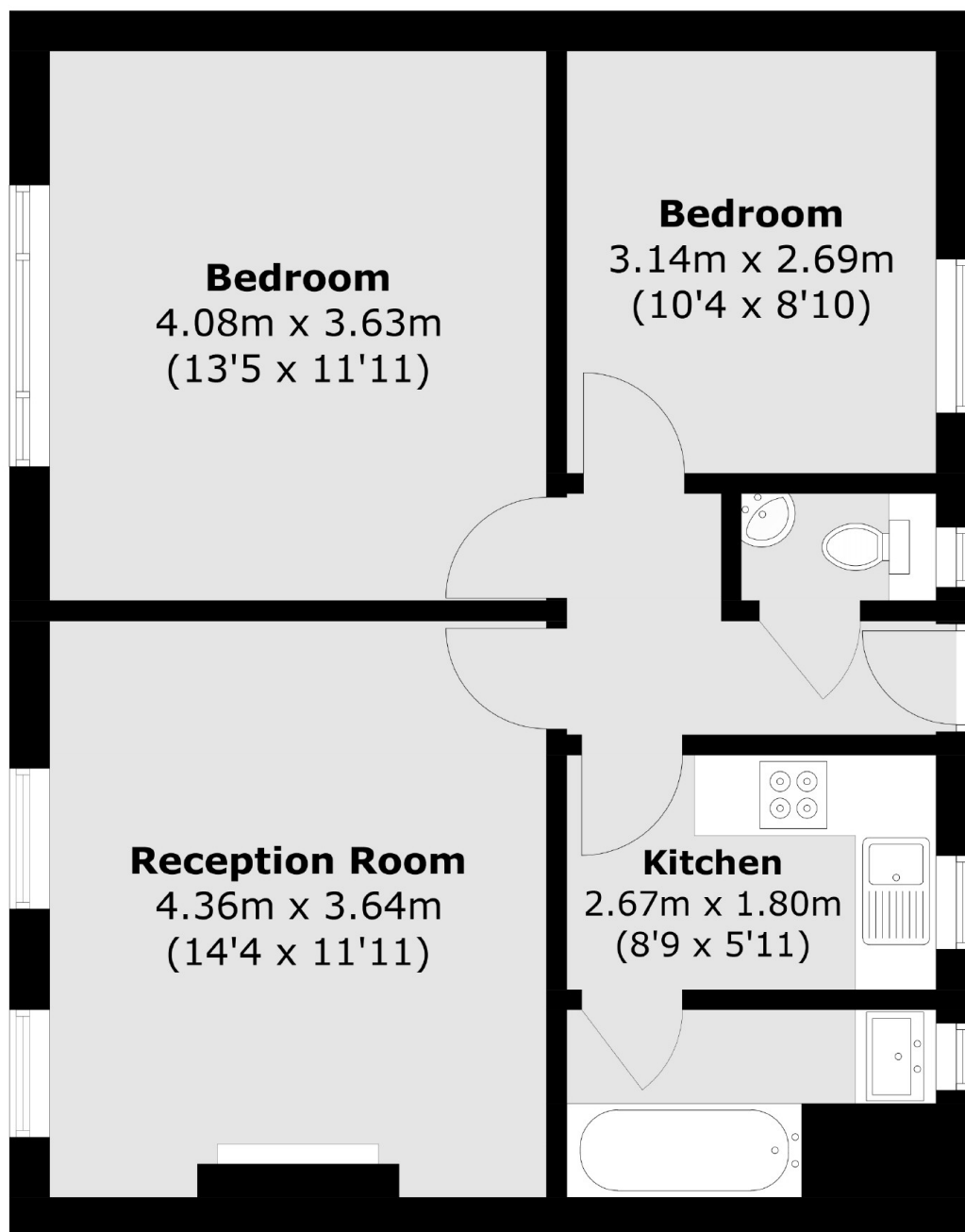
An excellent two bedroom purpose built home offered to the market with no onward chain. The property benefits from a spacious reception room, a separate kitchen and two double bedrooms. Just moments from the River Thames and Westminster this would be a perfect first time purchase or pied a terre.

Conveniently located within a short walk of Vauxhall Underground (Victoria Line) and Vauxhall Mainline stations and the green spaces of Kennington Park. This is a quiet and central spot and is just moments from pubs, eateries and local shops. Further transport links are close by with many bus routes and Kennington and Oval Underground stations (Northern line) and Westminster Underground and Waterloo Stations just a short walk away.

### Features

Two Bedrooms  
Excellent Location  
First Floor  
Separate Kitchen  
No Onward Chain  
Great Potential.

# Black Prince Road, London, SE11



Total area (approx.): 55.8 sq. m (600.6 sq. ft)