



Lomond Grove, SE5

£550,000

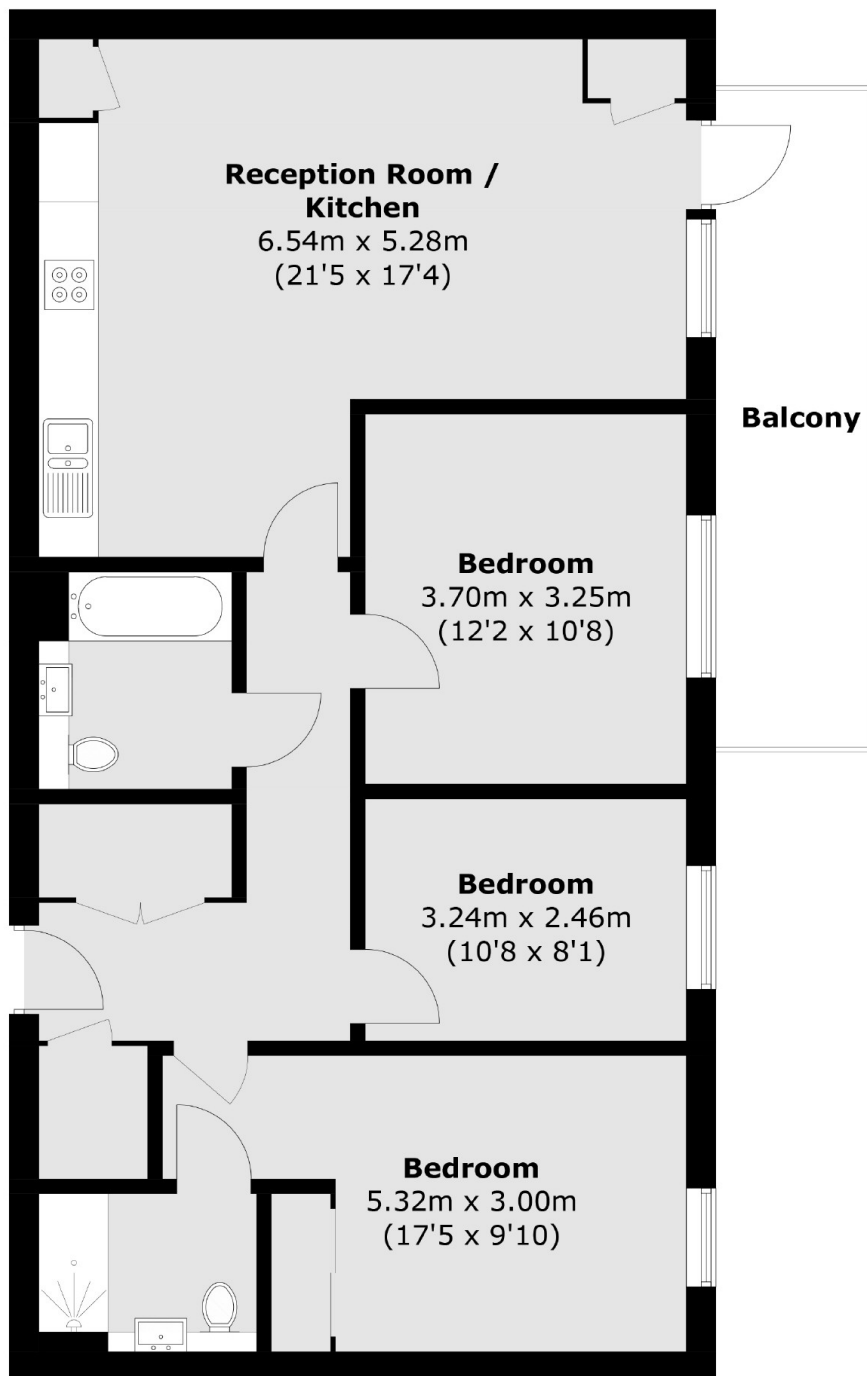
A spacious three double bedroom two bathroom modern apartment, designed to really stand out from the rest. With exceptional finishings a large private balcony and a quiet outlook, This really is a must see.

Lormond Grove is quietly tucked away beneath Burgess Park. Camberwell is easily accessible with its incredible choice of local pubs, shops and eateries. Frequent bus services to central London are just a short walk away.

Features

- Three Double Bedrooms
- Two Bathrooms
- Modern Apartment
- Secure Development
- Private Balcony
- 940 square ft

Lomond Grove, London, SE5



Total area (approx.): 87.4 sq. m (940.8 sq. ft)
Balcony: 10.3 sq. m (110.9 sq. ft)