

## Richborne Terrace, SW8

£799,950

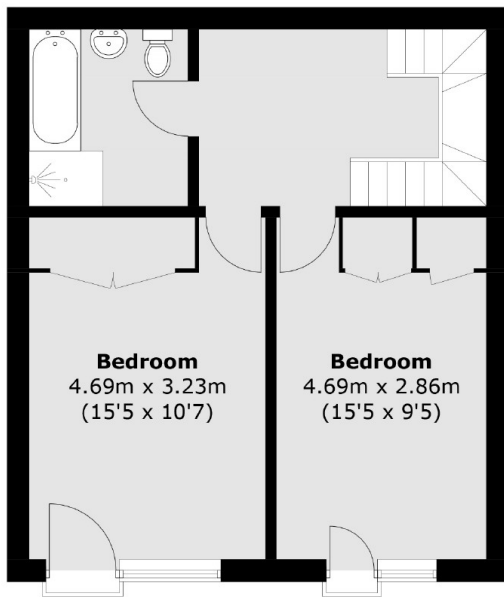
A remarkable modern two double bedroom freehold home offered to the market with no onward chain. The property has been beautifully finished to create a stylish and well-proportioned home with a fabulous roof terrace which is a total sun trap.

Sought after Richborne Terrace is perfectly located to access the many transport links available including Oval, Stockwell, and Vauxhall underground stations. There are many local shops close by as is Kennington Park.

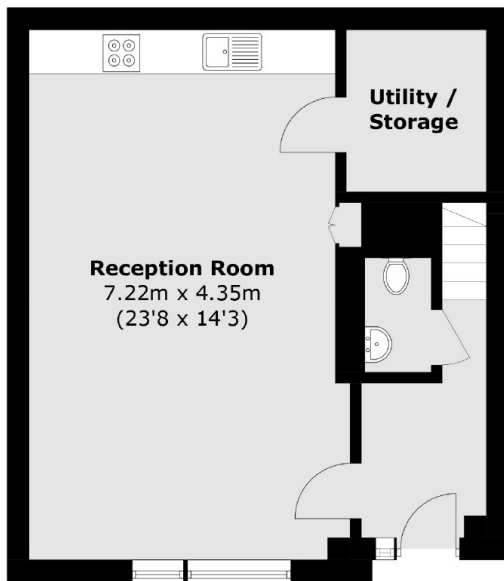
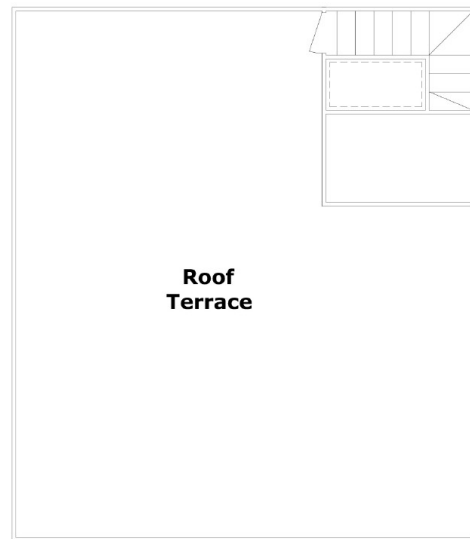
### Features

- Freehold House
- Two Double Bedrooms
- Excellent Location
- No Onward Chain
- Exceptional Roof Terrace
- Great Condition

# Richborne Terrace, London, SW8



**First Floor**



**Ground Floor**

Total area (approx.): 89.1 sq. m (959.1 sq. ft)  
Roof Terrace : 38.9 sq. m (418.7 sq. ft)