



Harleyford Road, SE11

£525,000

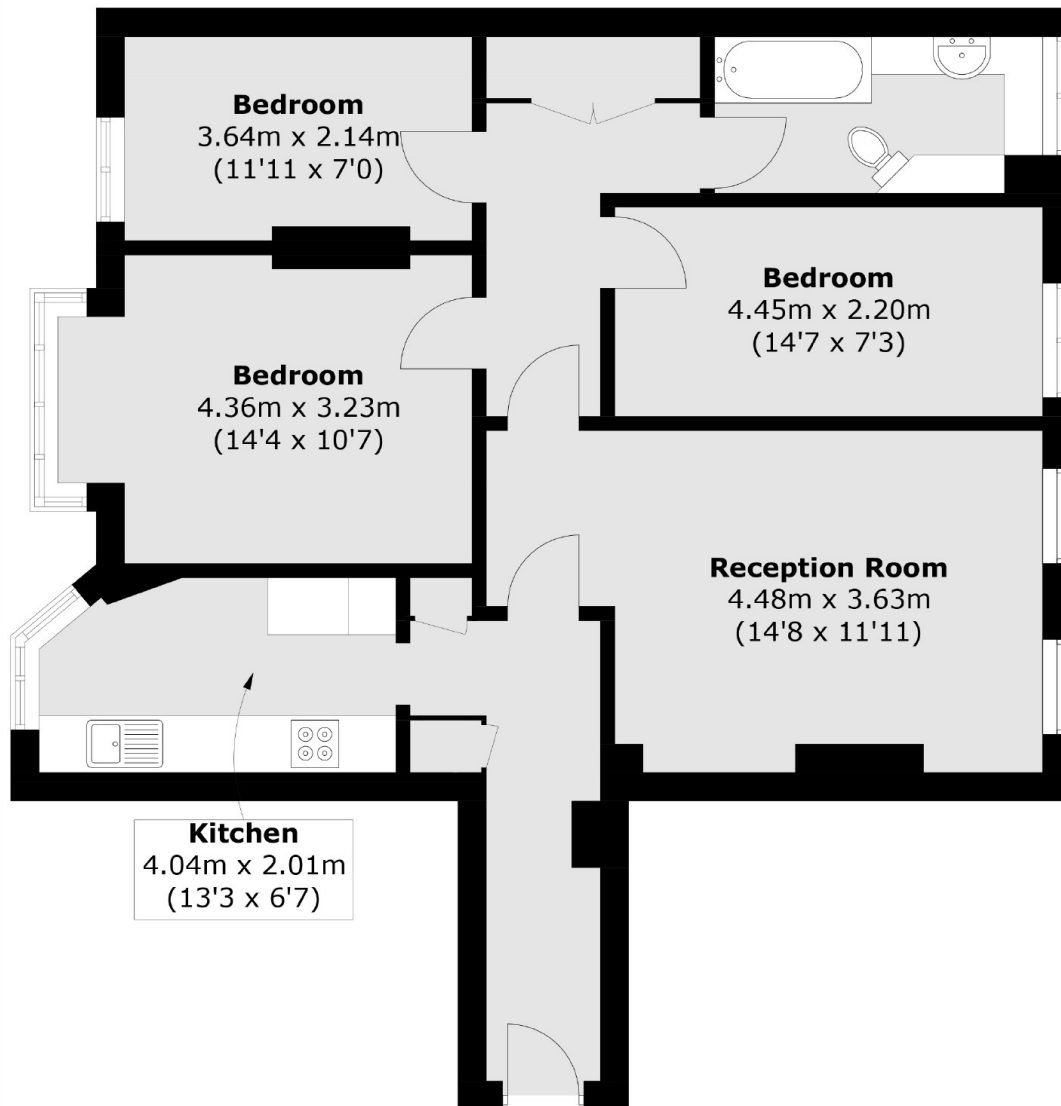
A bright and spacious three double bedroom ground floor flat. This charming home is in excellent condition throughout and benefits from a stylish separate kitchen and a lovely reception room which has space for both living and dining areas. There is a good amount of storage throughout and access to communal gardens.

Located just moments from everything Vauxhall has to offer. Simply fabulous transport links including Vauxhall mainline and tube stations are within a short walk. Many bus services and good schools are close by.

Features

- Three Bedrooms
- Ground Floor
- 877sq.ft
- Excellent Condition
- Great Location
- Communal Garden

Harleyford Road, London, SE11



Total area (approx.): 81.5 sq. m (877.2 sq. ft)