



Hemp Walk, SE17

£670,000

A fantastic four double bedroom family home in great condition throughout. Split over three floors the property has two bathrooms, a fantastic amount of reception space and views over Salisbury Row Park.

Hemp Walk is a quiet street within a short walk of great transport links. There are many bus routes providing good access to the City and West end. Salisbury Row Park is just moments away as is Bermondsey Street with it's wealth of bars, boutiques and restaurants.

Features

- Four Double Bedrooms
- Great Condition
- No Onward Chain
- Two Bathrooms
- Storage
- South West Facing Garden



Hemp Walk, SE17

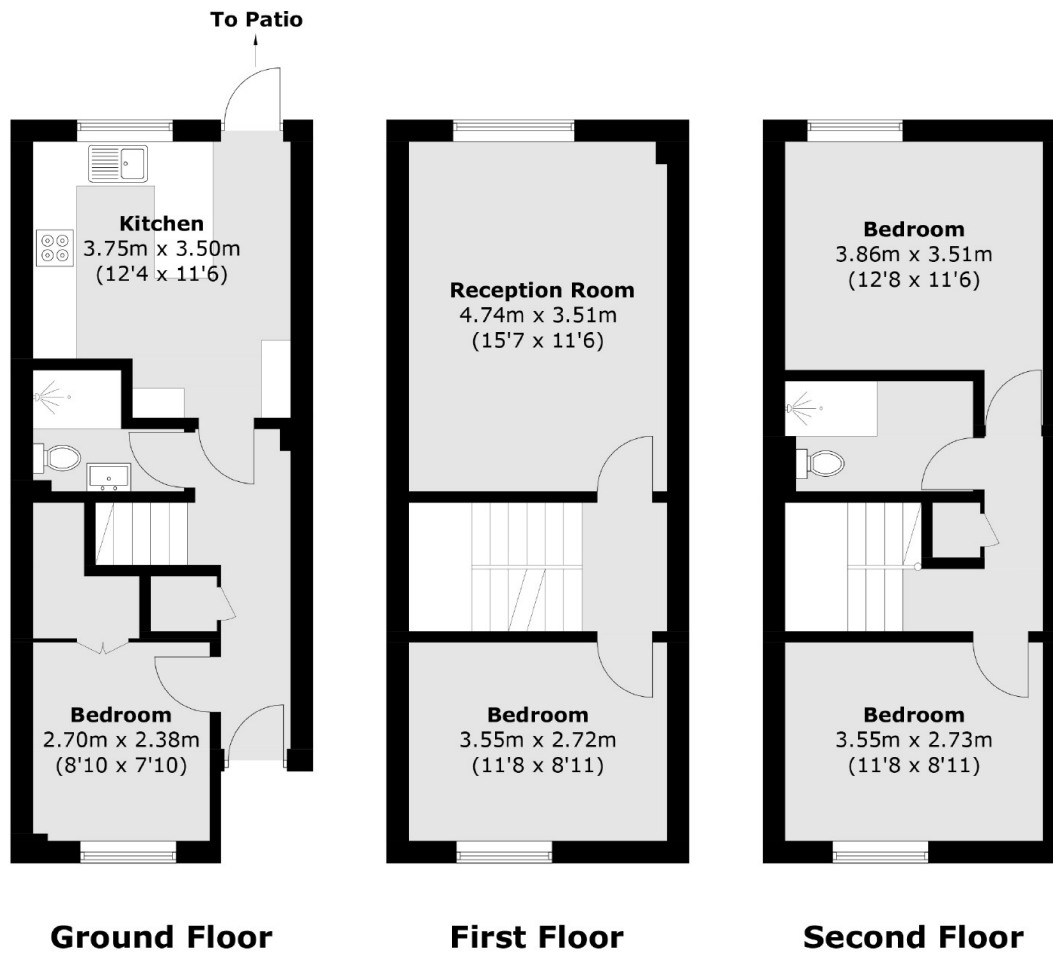
The versatile ground floor has a bedroom/ office to the front with built-in wardrobes. To the rear of the property is a really smart separate kitchen, perfect for those who love to cook with plenty of worktop space and direct access out onto a sunny private rear garden. Furthermore there is a separate shower.

The first floor has a large reception room, providing space for both living and dining areas. Flooded with light, this is a wonderful space for entertaining. There is a double bedroom to the front and stairs that lead up to the second floor where there are two further double bedrooms and another stylish shower room.

The property is in great condition throughout and benefits from great views over the green space of Salisbury Row Park. Sold with no onward chain.



Hemp Walk, London, SE17



Total area (approx.): 98.5 sq. m (1,060.3 sq. ft)