



Albany Road, SE5

£675,000

A charming two bedroom house in fabulous condition, retaining plenty of character throughout. There is an abundance of living space, a maintenance free rear garden and off street parking.

Conveniently located just opposite the green spaces of Burgess Park. This fantastic location lends for good access to Elephant and Castle mainline and tube stations. Walworth road with its vast amount of shops is a short walk away as are regular and consistent bus links.

Features

- Two Bedrooms
- Freehold Home
- Off Street Parking
- Excellent Condition
- Burgess Park
- Character Features



Albany Road, SE5

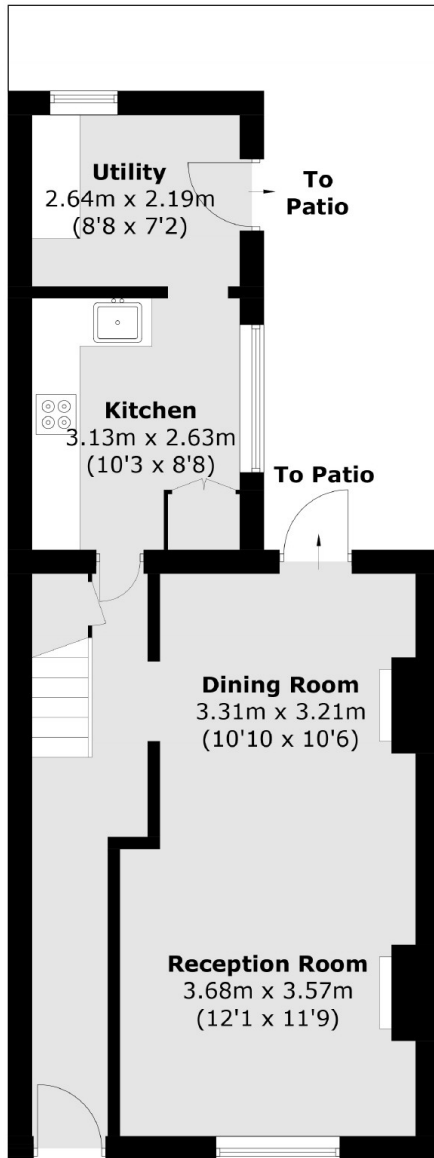
The welcoming entrance hall leads through into a double length reception room, a vibrant space for entertaining and complete with solid oak flooring and feature fireplaces. There is access to the maintenance free rear garden. The separate kitchen has gorgeous parquet flooring, plenty of work surface space, views over the rear garden and access to the utility room and garden.

The first floor has an impressive master bedroom with a vaulted ceiling, exposed brickwork and wooden floors. Furthermore there is access to a stylish Jack and Jill style bathroom which has a separate shower and a roll top bath. There is a second bedroom to the rear of the property.

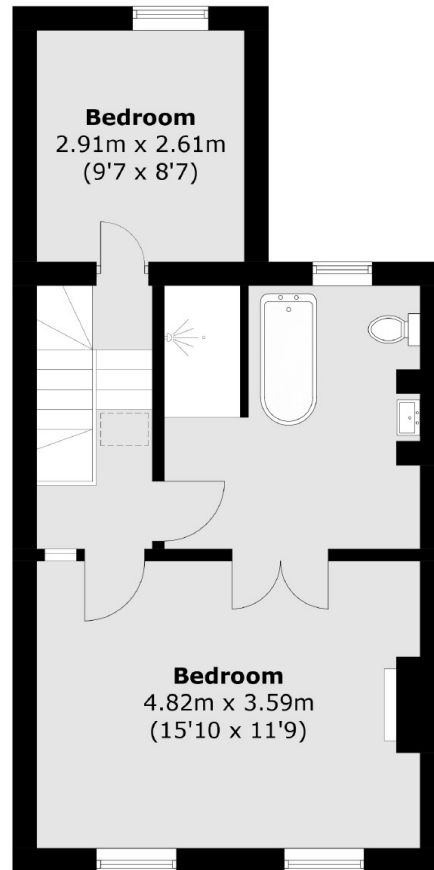
The house has been finished beautifully ready for the next buyers to move in, enjoying great access to the City and benefiting from off street parking to the front.



Albany Road,
London, SE5



Ground Floor



First Floor

Total area (approx.): 91.4 sq. m (983.8 sq. ft)