



## St. George Wharf, SW8

£699,950

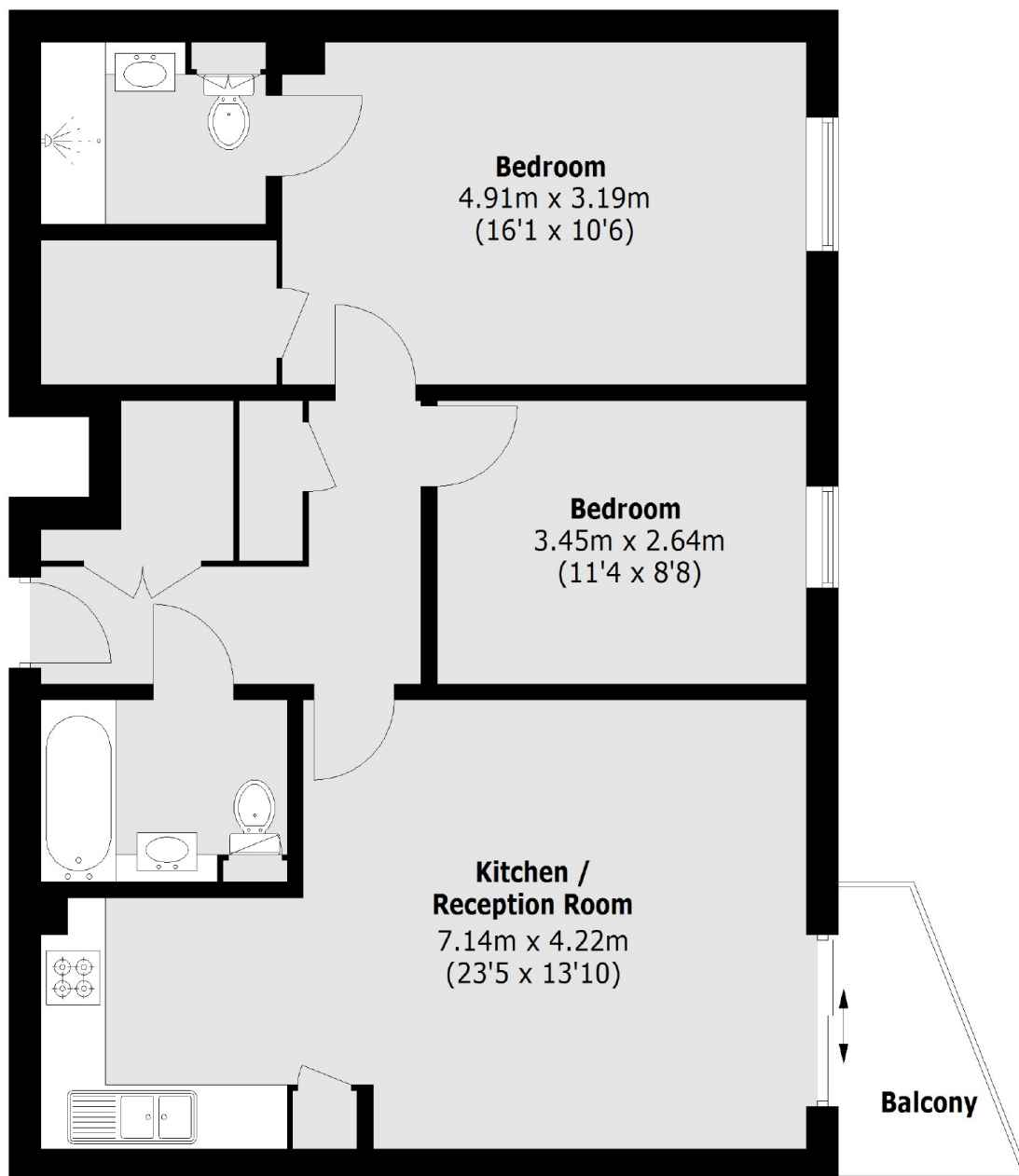
A classy two double bedroom, two bathroom modern apartment. The property is in excellent condition throughout and benefits from having a private balcony with space for seating and direct views of the River Thames. Furthermore there is great storage, a walk in wardrobe in the master bedroom, concierge service and the property is being sold with no onward chain.

St. George Wharf is located on the banks of the Thames. Benefitting from unbeatable transport links being just moments from Vauxhall station (Victoria line) tube and National Rail. There is also a River taxi service from St George Wharf Pier with great access to the city and beyond.

### Features

- Two Double Bedrooms
- No Onward Chain
- River Views
- Two Bathrooms
- Excellent Condition
- Concierge

# St. George Wharf, London, SW8



Total area (approx.): 73.2 sq. m (787.9 sq. ft)  
Balcony: 3.2 sq. m (34.4 sq. ft)