



Building Plot, Kirkoswald Road, Turnberry



mcsherry
holiday
break accomodation
for sale
1922 30m

mcsherry
holiday
break accomodation
for sale
1922 30m



Authorised and Regulated by the Financial Conduct Authority



McSherry Halliday are delighted to bring to the market a building plot situated just 400 yards from the world renowned Turnberry Hotel and Spa and it's wonderful golf course. A five minute walk from the plot you will find Turnberry Beach with a lovely sandy coastline offering some amazing sunsets. Planning permission has been granted for a three bay, five apartment, one and a half storey dwelling offering views over the Firth of Clyde, Isle of Arran and Ailsa Craig. The plot itself extends to approx 566 square metres. Water and electricity services available.

A 30 minute drive from Prestwick Airport and only 25 minutes from Ayr, the plot offers ease of access to Turnberry, Ayr, Girvan and the surrounding areas. Culzean Castle and Country Park is only three miles away and the pretty fishing village of Maidens is only two miles away offering moorings and pontoon facilities as well as local amenities. Six miles to the South is the lovely seaside town of Girvan with it's supermarkets, schools and many shops.

Schooling is available locally at primary level and at secondary level at nearby Girvan Academy. For the commuter there is particular ease of access to the M77 motorway network providing a direct link to the M8 motorway for access to Glasgow and to the Ayrshire coast. A regular rail service is available from nearby Ayr and Girvan again linking to Glasgow and the Ayrshire coast.

For further information or to book a viewing by appointment contact our Kilmarnock office on 01563 533121. Detailed plans are available on request.

Viewing

Telephone solicitors on 01563 533121

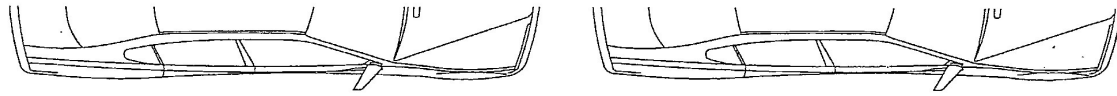
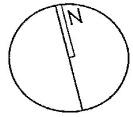
Entry Date

Negotiable

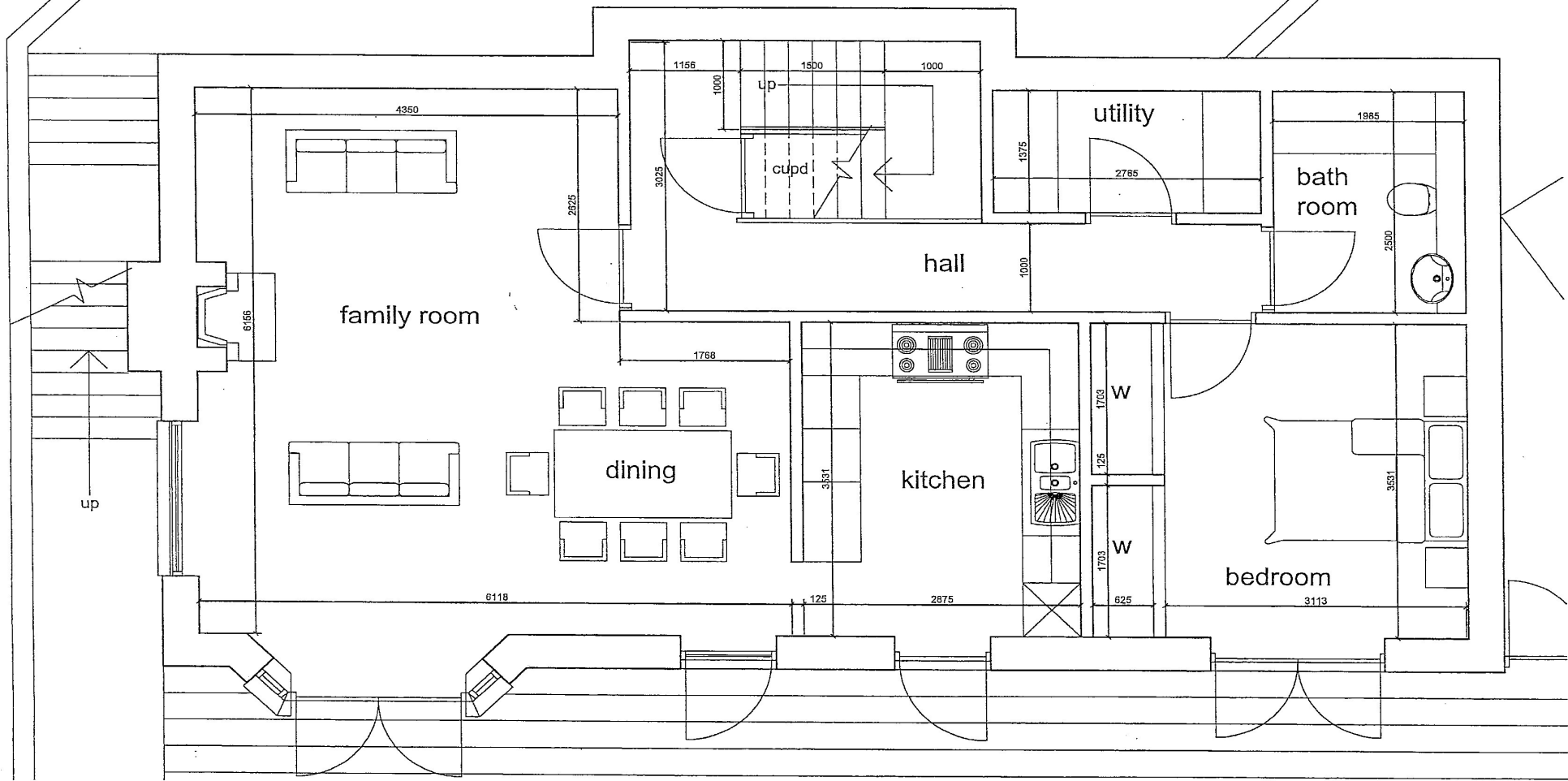
Travel Directions

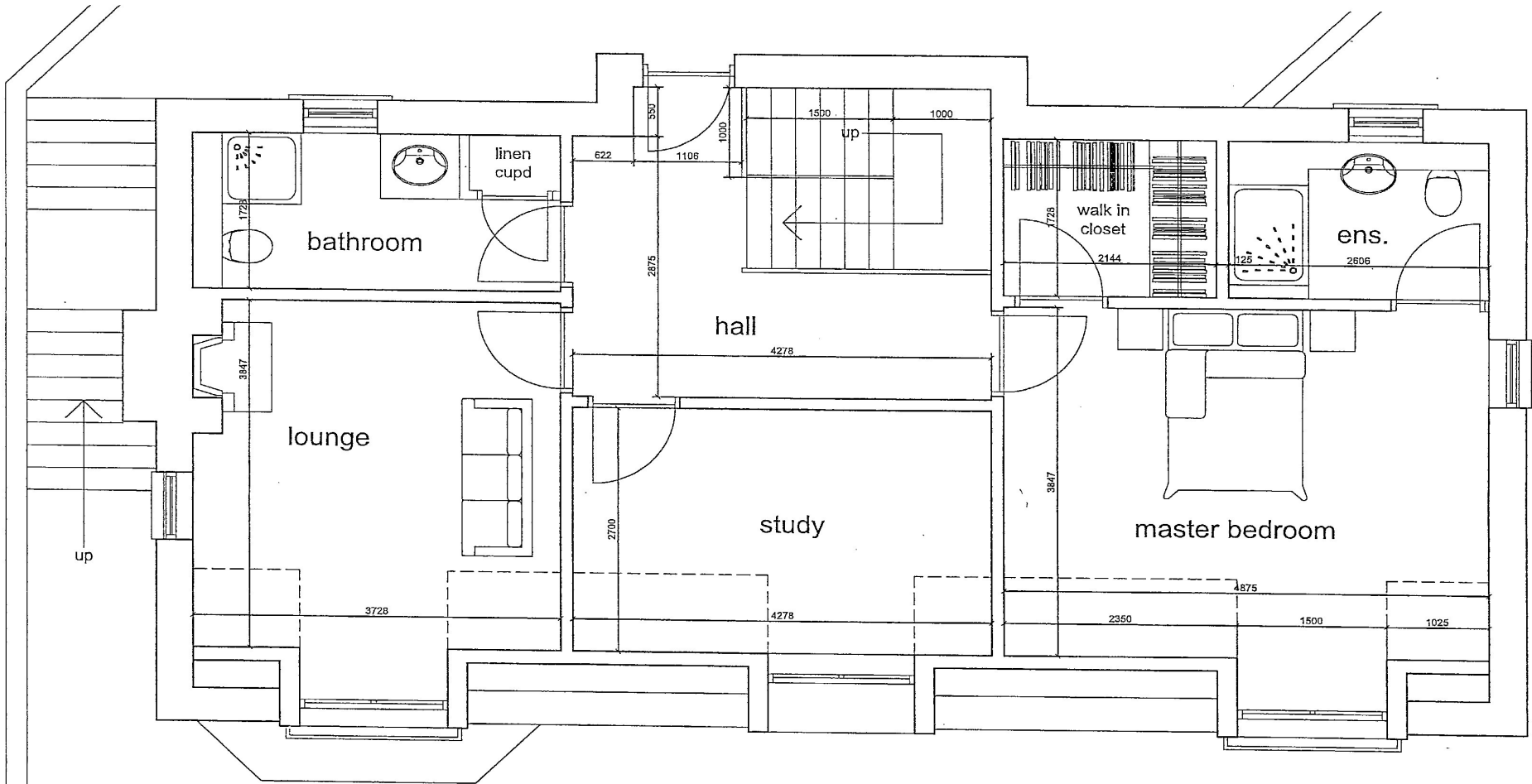
Travelling South from Ayr on the A77, follow signs for Stranraer and follow the road through Minishant, Maybole then Kirkoswald. Around 2 miles after Kirkoswald and just before the signs for Turnberry, the Plot sits on the right hand side.



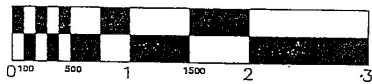


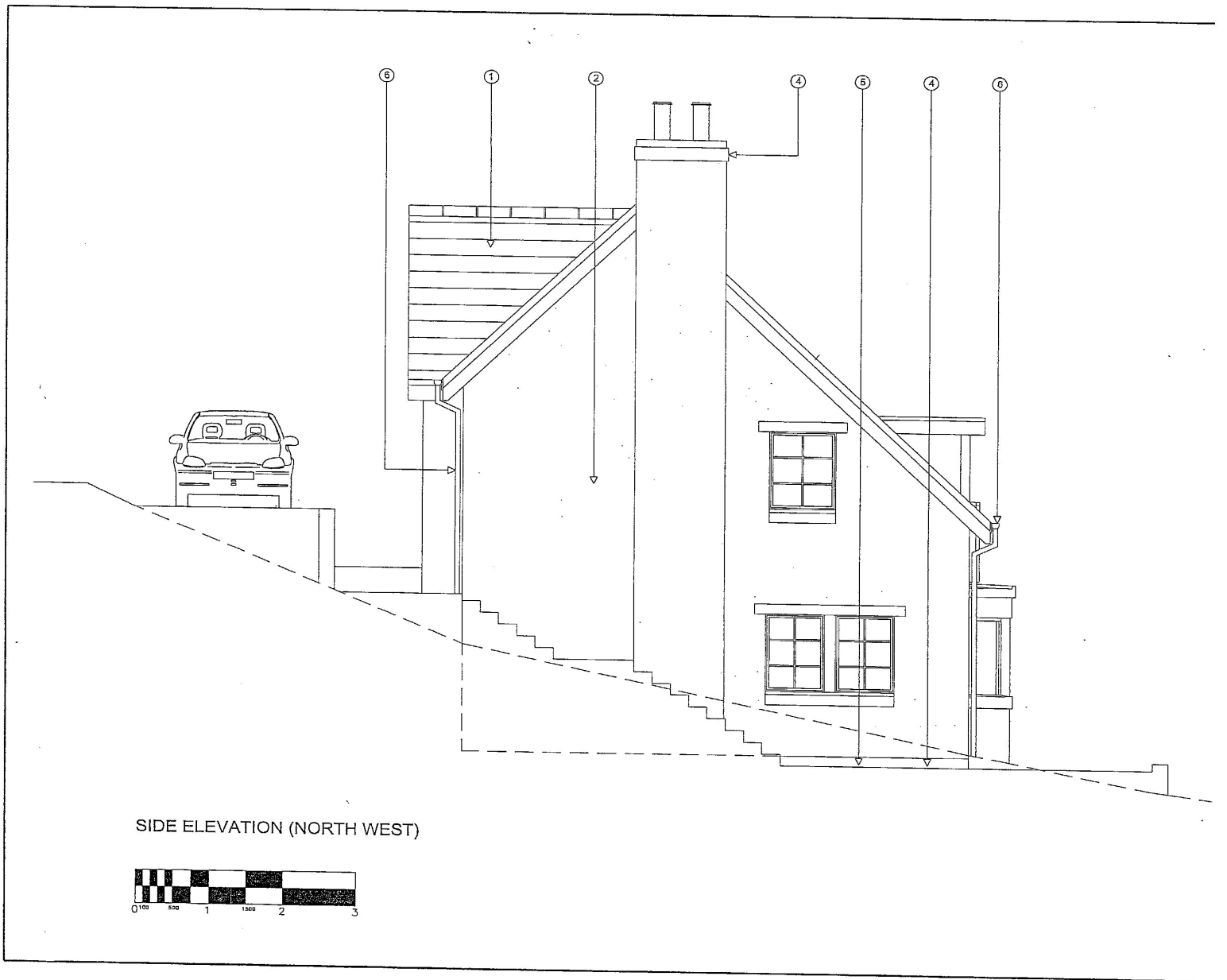
ramp





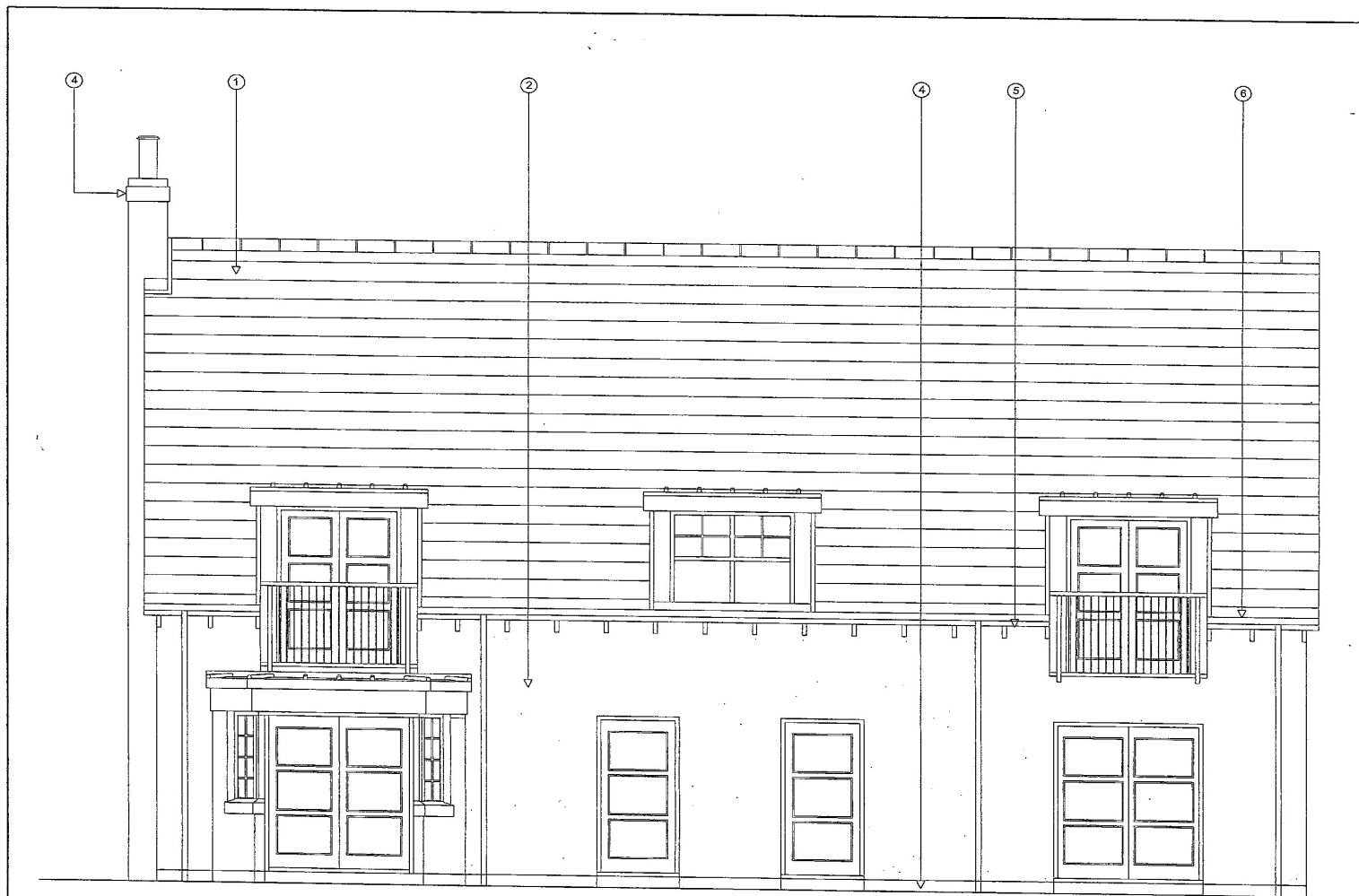
UPPER LEVEL FLOOR PLAN



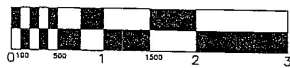


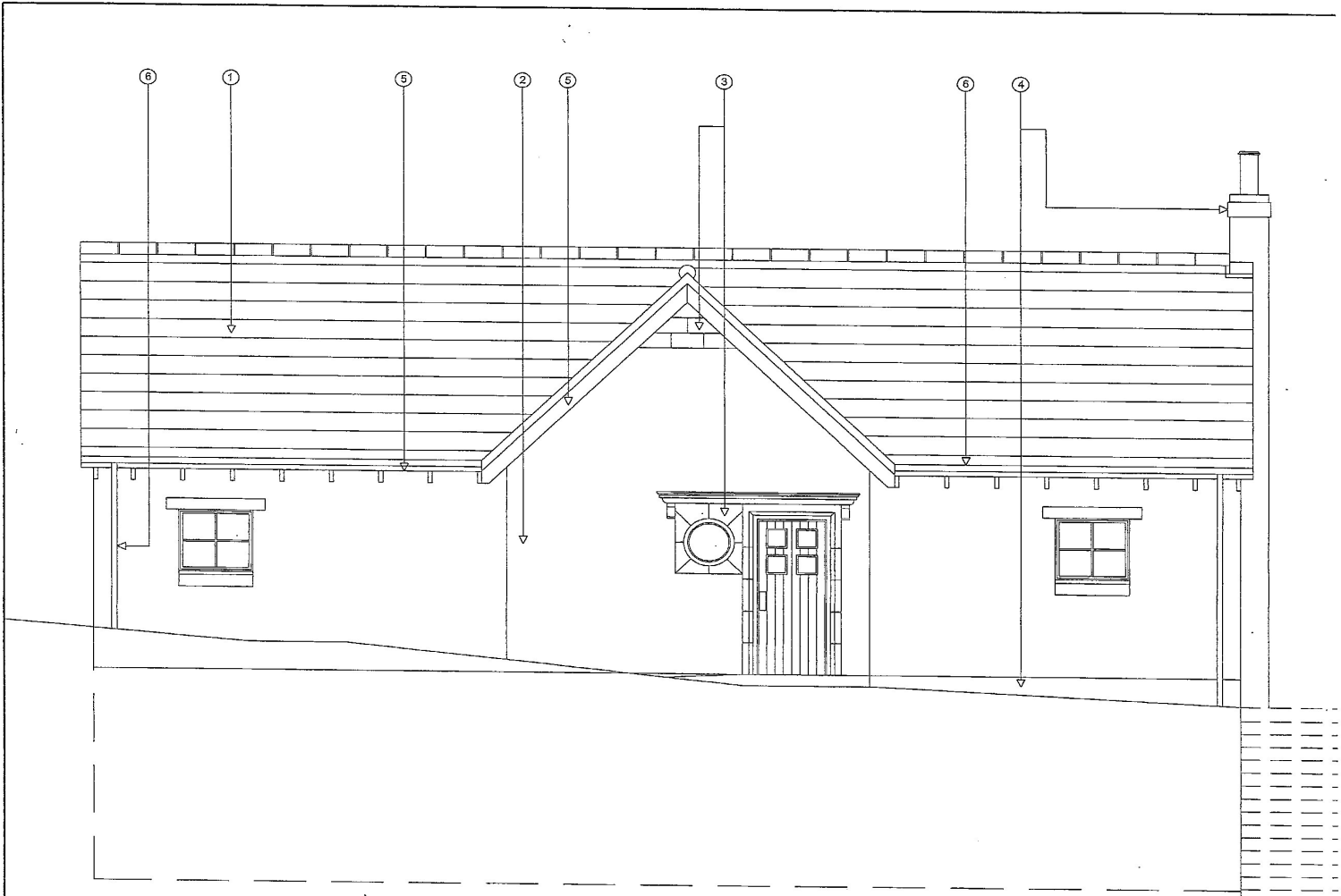
SIDE ELEVATION (NORTH WEST)





FRONT ELEVATION (SOUTH WEST)





SIDE ELEVATION (NORTH EAST)



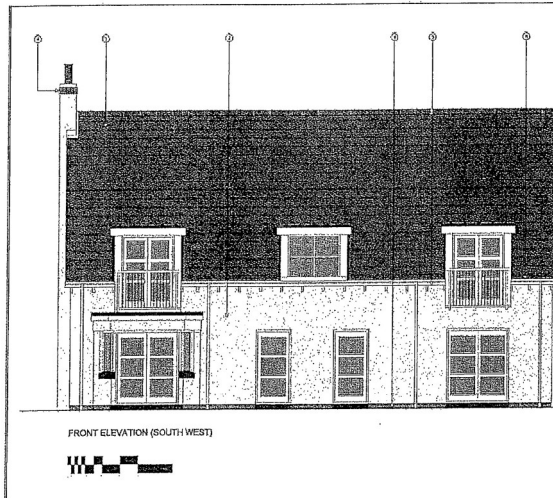


Figure 9: Drawing L(-)03 Front Elevation (South West) as proposed

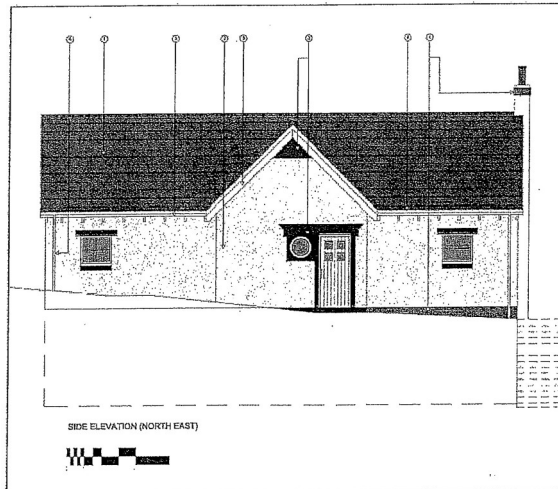


Figure 10: Drawing L(-)05 Back Elevation (North East) as proposed

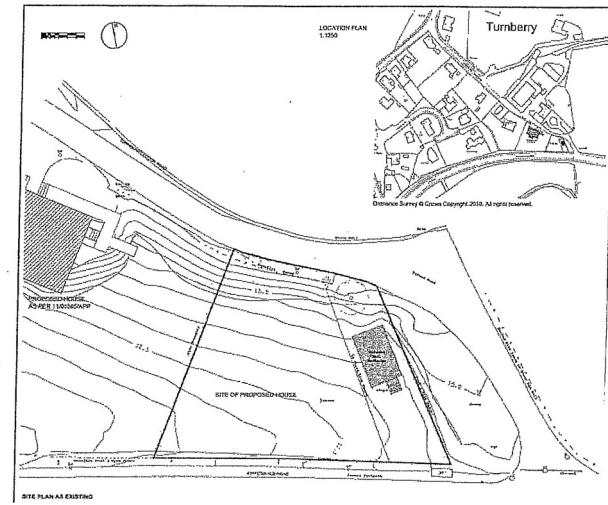


Figure 7: Drawing L(-)10 Site Plan as existing

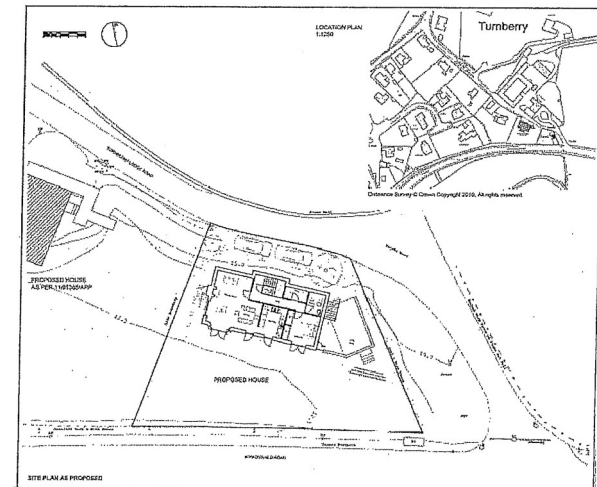
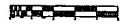
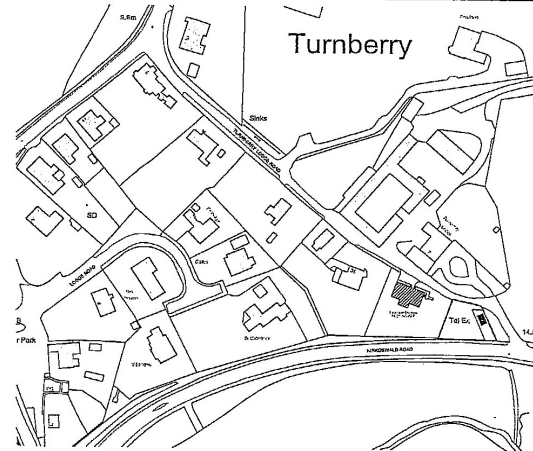


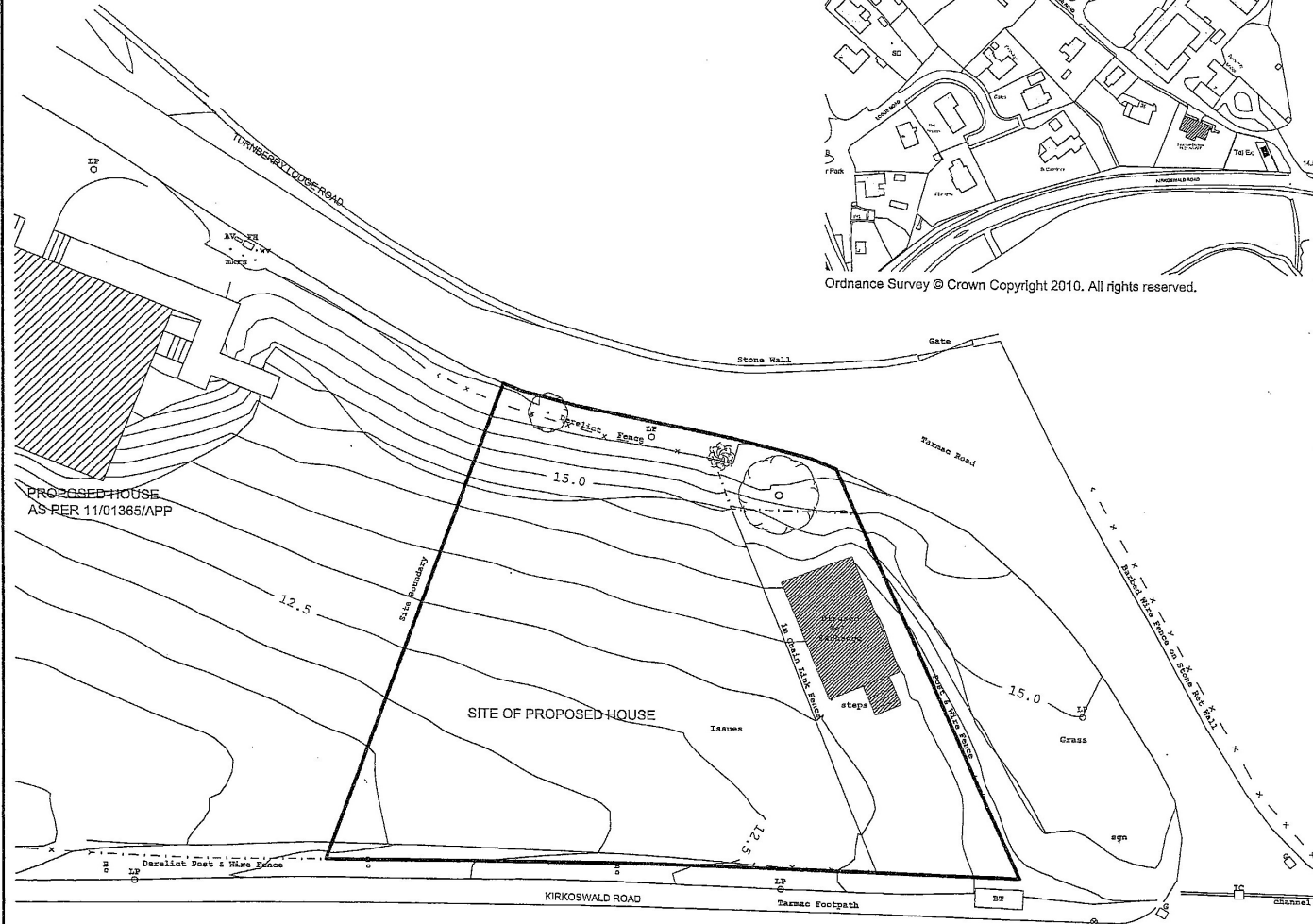
Figure 8: Drawing L(-)06 Site Plan as proposed



LOCATION PLAN
1:1250



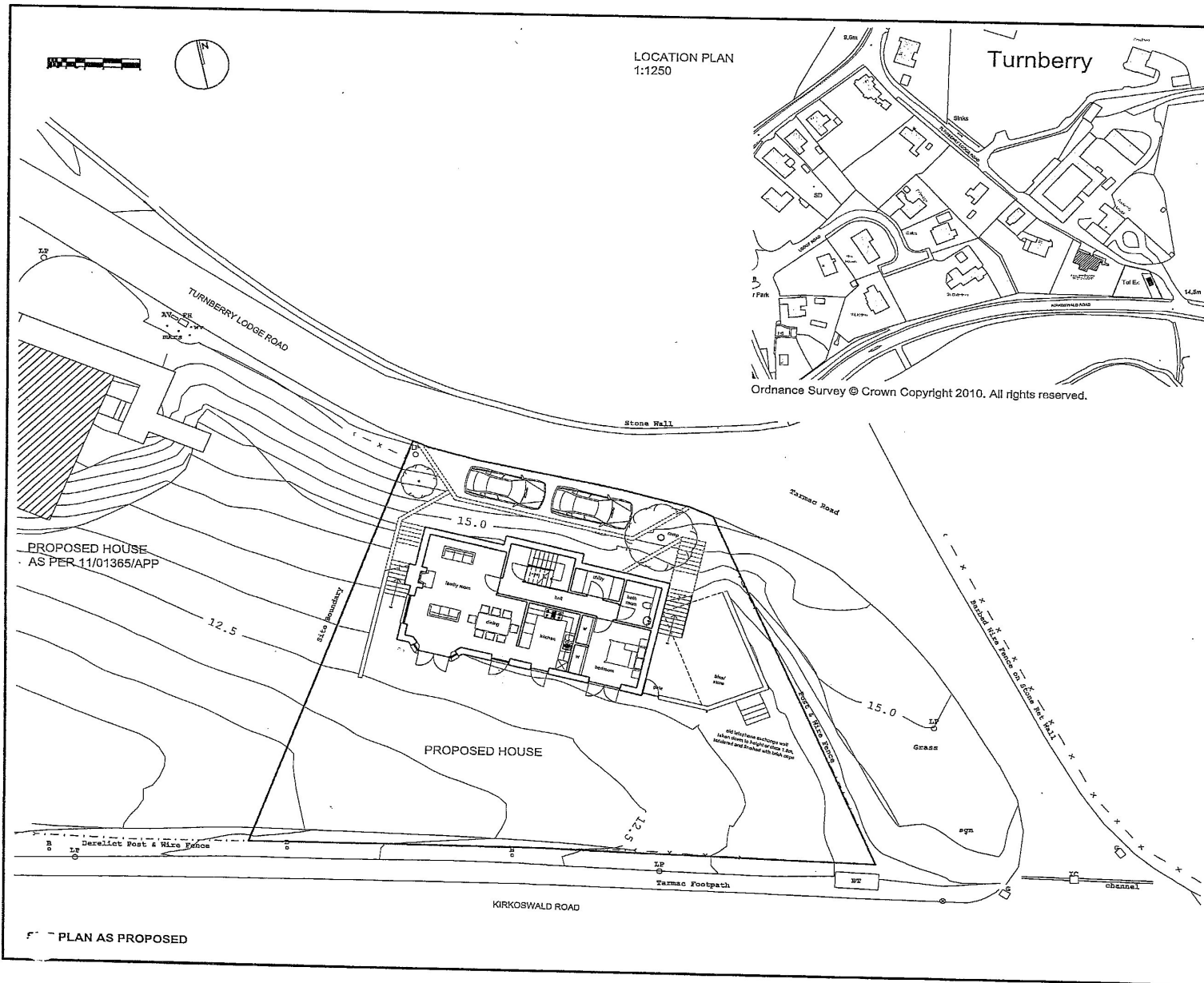
Ordnance Survey © Crown Copyright 2010. All rights reserved.



PROPOSED HOUSE
AS PER 11/01365/APP

SITE OF PROPOSED HOUSE

5 PLAN AS EXISTING





Whilst we endeavour to make these particulars as accurate as possible, they do not form part of any contract or offer nor are they guaranteed. Measurements are approximate and in most cases are taken with a digital tape. If there is any part of these particulars that you find misleading or simply wish clarification on any point, please contact our office immediately when we will endeavour to assist you in any way possible.

Authorised and Regulated by the Financial Conduct Authority

mcsherry

mh halliday

Solicitors | Estate Agents | Financial Services

Authorised and Regulated by the Financial Conduct Authority