

For Sale

**Guide Price
£650,000**

Freehold

- Luxury Refurbishment
- Five Bedrooms
- 3 Bathroom
- Heart of Furzedown
- Thru Lounge
- 22' Kitchen Dining Room
- Close to British Rail



C

S

J



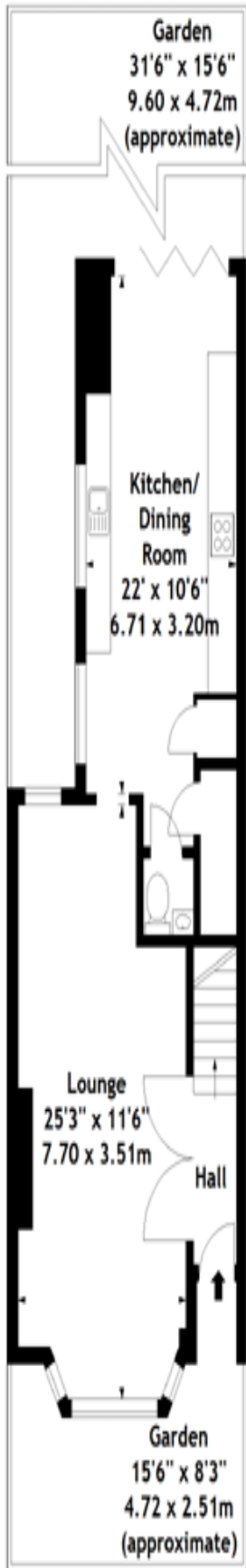
Fallsbrook Road, London, SW16 6DU

C.S.J Estate Agents are delighted to offer this luxury family home in the heart of Furzedown which has undergone full refurbishment to an extremely high standard.

Comprises thru lounge, 22' kitchen / dining room, three bathrooms, ground floor w/c, five bedrooms and landscaped garden.

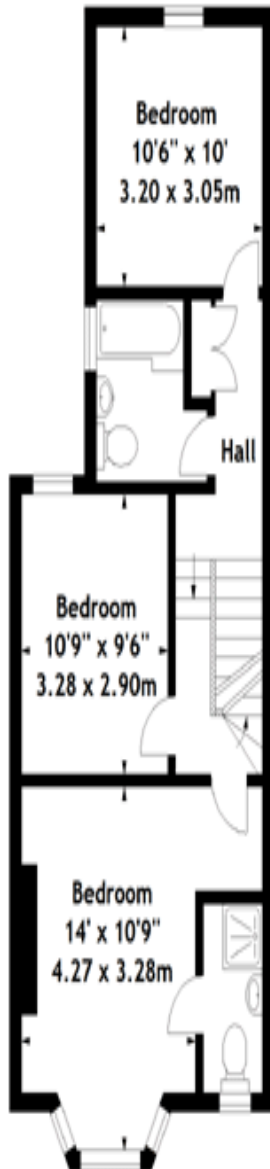
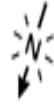
The property is located just a short distance to Streatham Common Station.
Chain Free...Immediate Viewing is Advised Call 020 8296 1270





Ground Floor

Fallsbrook Road, SW16
Approx. Gross Internal Area
1477 Sq Ft - 137.21 Sq M



First Floor



Second Floor

Measured in accordance with RICS guidelines. Every attempt is made to ensure accuracy, however all measurements are approximate. This floor plan is for illustrative purposes only and is not to scale.
© Datagraphy Ltd 2014
Photographs * Floorplans * Virtual Tours
Tel: 0843 643 4401 www.datagraphy.com

